

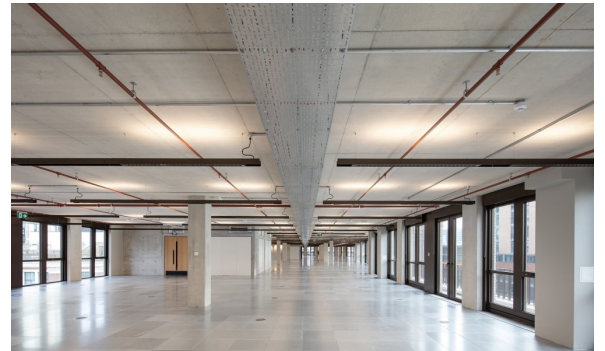


The Featherstone Building, Old Street district, London

Bespoke product developed for highly complex workspace project

Located in the Old Street district, close to the City of London, The Featherstone Building is 123,600 square feet of premium workspace inspired by London's industrial heritage.

Completed in 2022, the project was designed by Morris + Co, for developers Derwent London. Whitecroft Lighting was selected by lighting design specialists Pritchard Themis to develop a product to meet the complex brief. Aesthetically the client was seeking a solution to match the industrial and technological feel of the building, and blend with the exposed concrete ceiling. Technically there were a large number of criteria, including finishes, colour temperature of the lit environment, lighting levels, suspension, spacing, and the ability to accommodate a third-party DALI addressable PIR sensor & photocell.



1,300

CUSTOM MADE LUMINAIRES

20

VARIATIONS OF PRODUCT DEVELOPED

123,600

SQ FT PREMIUM OFFICE SPACE



Key Facts

Project Name	The Featherstone Building
Location	London
Client	Derwent London
Consultant	WSP
Builder	Skanska
Lighting Consultant	Pritchard Themis

A Custom Made Solution

Whitecroft's team of luminaire designers created prototypes and finished samples for Pritchard Themis and installing contractor Skanska Building Services, to ensure that the product fulfilled every part of the brief, including installation and maintainability.

The end result was a totally unique product that sits at home within the industrial inspired workplace.

In close collaboration with Skanska, Whitecroft developed 20 variations of the product, to accommodate different lengths, some with emergency lighting, and others presence detectors and daylight control.

In total, Whitecroft delivered over 1,300 linear lighting units for the scheme along with 'back of house' and 'shell and core' luminaires.

