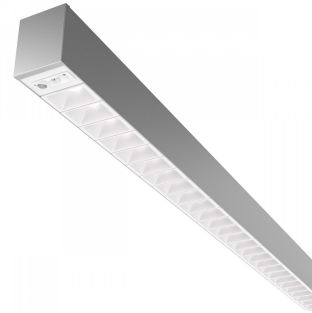


Avenue Metro Surface



Modular linear LED system for surface mounting



Surface, Pod, Organic Response, Silver



Surface, Hexaprism, Organic Response, Black



Surface, Opal, Organic Response, White



Surface, Hexaprism, Corner, Silver

Overview

Avenue Metro takes design and technology to new heights. The slim body creates a sense of space and drama, whilst continuous lines of light trace the contours of the building, complementing every interior design. Revolutionary optics use clustered LED arrays to deliver higher light output with low glare, reducing the number of installed points and adding to the minimalist design that Avenue Metro promotes.

Optics

- Choice of optics:
 - Opal diffuser for general, circulation and feature areas
 - Hexaprism diffuser and Pod optic for visual comfort in office environments and glare control in EN12464-1 and LG7 compliant schemes
- All diffusers are TP(a) rated polycarbonate material
- White pods for white (RAL 9003) or silver (RAL 9006) body luminaire
- Black pods for black body (RAL 9005) luminaire
- 4000K 'cool' or 3000K 'warm' white LEDs
- Ra80 standard, Ra90 available on request
- E-light LED as standard with Pod optic for increased luminous efficacy and reduced through life costs
- Low, medium or high outputs available
- Outputs should not be mixed in any continuous run
- Typical lumens per metre as follows:
 - Pod (white) - Low Output - 1193 lumens
 - Pod (white) - Medium Output - 1933 lumens
 - Pod (black) - Low output - 884 lumens
 - Pod (black) - Medium output - 1367 lumens

- Hexaprism - Low Output - 1150 lumens
 - Hexaprism - Medium output - 1610 lumens
 - Opal - Low Output - 1245 lumens
 - Opal - High Output - 2840 lumens
 - Emergency Output:
 - Opal - 349 Lumens
 - Hexaprism - 261 Lumens
 - Pod - 290 Lumens
-

Body

- IP40 when surface mounted
- Modular options for clean continuous lines of light with or without infills or for use as a stand-alone luminaire
- Extruded aluminium body with die cast end caps
- Choice of integral emergency options; 3 hour and addressable COMECS
- Also available with 'EW' Routefinder Wireless for addressable emergency testing without the need for a 2 core communication cable
- Emergency variants supplied with Lithium Iron Phosphate (LiFePO4) battery technology; featuring extended design life reducing replacement frequency to lower total cost of ownership, and advancing sustainability through support for end of life recycling
- Body colour options white, silver or black (black pods for black body luminaire)
- Through wiring as standard for simple electrical connection
- Cam joining mechanism delivers seamless join with no light loss
- Body lengths up to 3m, a 1.25m body allows any length over 2m to be achieved in 0.25m increments
- Corner units for creating signature shapes*
- Optional integral Organic Response® wireless sensor that communicates with its neighbouring luminaires, automatically controlling light across the area†
- Surface mounting kits supplied separately
- End caps and continuous joining kits supplied separately
- End caps supplied and fitted on standalone versions
- Can be installed as a suspended without uplight luminaire (suspension kit required)
- Suspended with uplight and recessed options also available

* Corner units for the Pod optic system are blank infills and not illuminated

† Every luminaire within an area to be controlled must have an integral Organic Response® detector. Wall switch and dongle are also available (supplied separately)

Note: All DALI variants require 1 DALI address per driver. COMECS addressable emergency variants will require an additional DALI address.

Accessories

- White End Cap Kit (Pair*) AOPENDCW **
- Continuous Mounting Kit AOCMOKIT ***
- Surface Mounting Kit AOSMOKIT ****
- Suspension Kit AOSUSKIT *****
- 1000mm Infill White AOP1000INFW **
- 1250mm Infill White AOP1250INFW **
- 1500mm Infill White AOP1500INFW **
- 2000mm Infill White AOP2000INFW **
- (** Change 'W' to 'S' for silver or 'B' for black)

* End caps required for ends of continuous runs only

*** One continuous mounting kit per join

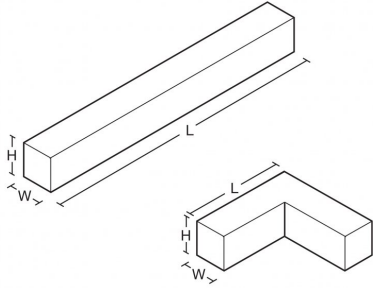
**** One Surface mounting kit per luminaire length (standalone and continuous mounting)

***** One suspension kit per luminaire and infill length (standalone and continuous)

LED Performance

Colour Temp	RA (CRI)	Life expectancy	Colour consistency
3000K / 4000K	>80	> 100,000 hrs	MacAdam 3 SDCM

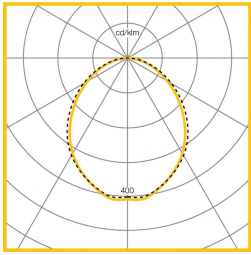
Dimensions



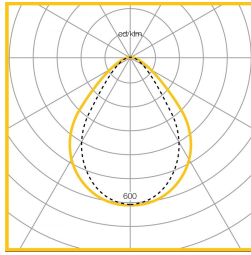
VERSION	L	W	H	KG	KG(EM)
1m	1000	80	100	4.0	4.5
1.25m	1250	80	100	5.0	5.5
1.5m	1500	80	100	6.0	6.5
2m	2000	80	100	7.5	8.0
3m	3000	80	100	11.5	12.0
Corner	520	80	100	4.0	4.5
End Cap	10	80	100	0.1	-
1m Infill	1000	80	100	2.7	-
1.25m Infill	1250	80	100	3.3	-
1.5m Infill	1500	80	100	4.0	-
2m Infill	2000	80	100	5.3	-

† Width includes flange

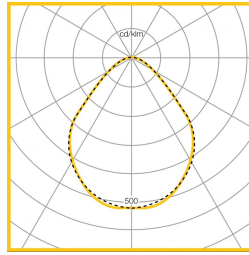
Photometric Performance



Surface Opal LED
4000K
LOR = 100%
SHR MAX = 1.52



Surface Pod LED
4000K
LOR = 100%
SHR MAX = 1.45



Surface Prismatic
LED 4000K
LOR = 100%
SHR MAX = 1.51

To Specify

Modular linear LED system with a modern minimalist aesthetic for continuous or stand alone applications. TP(a) Opal diffuser for general, circulation and feature areas. TP(a) Prismatic diffuser or Pod optic for EN12464-1 compliant schemes. Create long lines and features of light with a seamless aesthetic – as Whitecroft Lighting AVENUE METRO SURFACE.
