

Egress Exit Surface/Suspended Installation Leaflet



Feb 2021 - Rev A



Whitecroft Lighting Limited

Burlington Street, Ashton-under-Lyne, Lancashire OL7 0AX

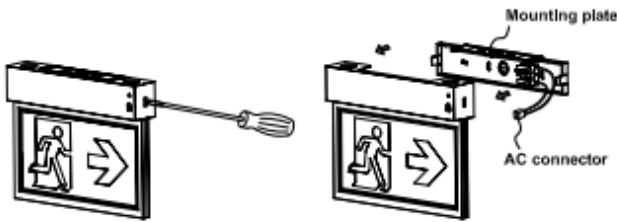
Telephone +44 (0)161 330 6811 Facsimile: +44 (0)161 331 5855

Registered No. 3848973 England

Registered Office: As above

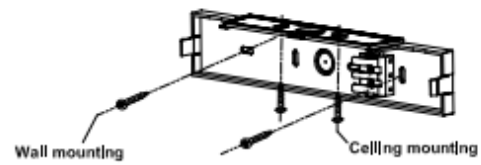
Mounting Instructions

1 Remove mounting plate



- a) Insert flat screwdriver into slot on side of unit, pry off and remove the mounting plate from unit.
- b) Disconnect AC connector from PCBA.

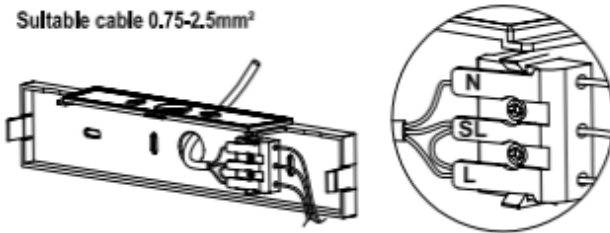
2 Wall mounting or Ceiling mounting



- a) Knock out appropriate center cable entry hole and mounting screw hole on the mounting plate.
- b) Route AC supply wire through center hole of mounting plate.
- c) Fix mounting plate on the mount surface with screws and anchor nuts.

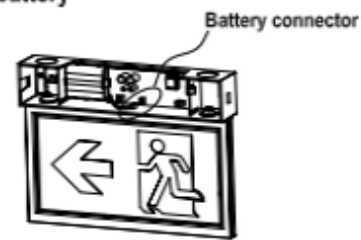
3 Wiring connection

Suitable cable 0.75-2.5mm²



Connect the AC supply wire to terminal block. Refer to wiring instruction showed below.

4 Connect battery



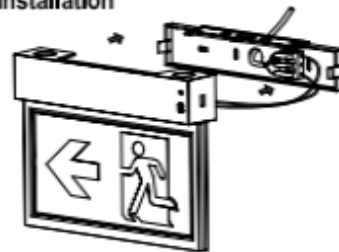
Connect battery male and female connector inside of mounting bracket.

5 Change pictogram when necessary



Remove the pictogram on the unit, select other pictogram you need then insert into slot of panel.

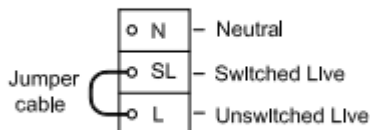
6 Finish installation



Snap AC supply on PCBA and then snap fixture to mounting plate.

Wiring Instructions

Maintained Wiring

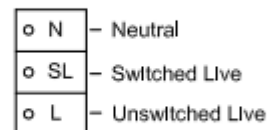


Maintained (default operation):

Connect L,N and leave jumper cable connected.

For switched maintained operation, disconnect the jumper cable and connect a switched live to 'SL' terminal.

Non-Maintained Wiring



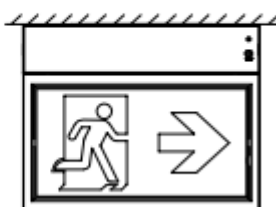
Non-maintained:

Connect L,N and remove jumper cable.

Mounting Options

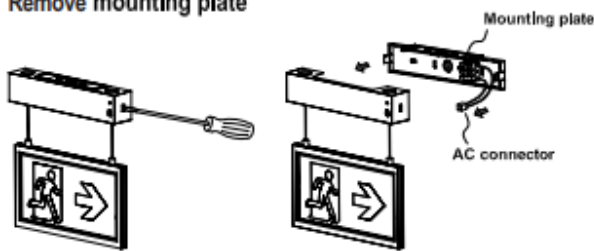
Wall mounting

Ceiling mounting



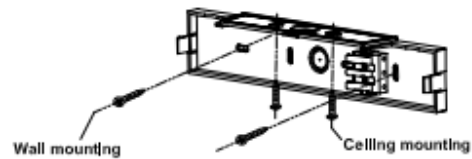
Mounting Instructions

1 Remove mounting plate



- Insert flat screwdriver into slot on side of unit, pry off and remove the mounting plate from unit.
- Disconnect AC connector from PCBA.

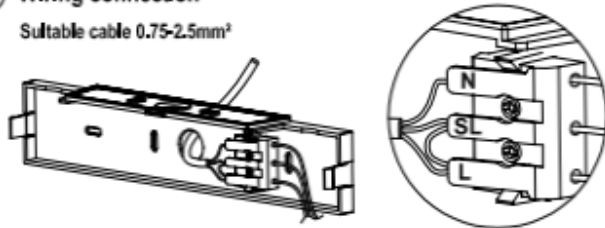
2 Wall mounting or Ceiling mounting



- Knock out appropriate center cable entry hole and mounting screw hole on the mounting plate.
- Route AC supply wire through center hole of mounting plate.
- Fix mounting plate on the mount surface with screws and anchor nuts.

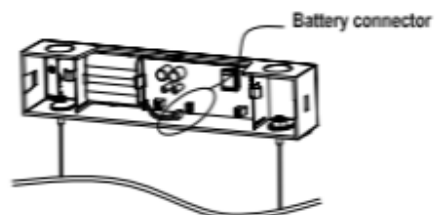
3 Wiring connection

Suitable cable 0.75-2.5mm²



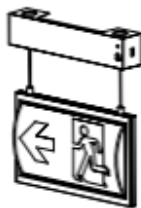
Connect the AC supply wire to terminal block. Refer to wiring instruction showed below.

4 Connect battery



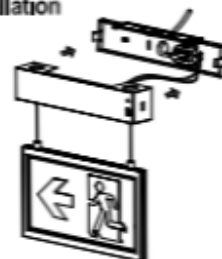
Connect battery male and female connector inside of mounting bracket.

5 Change pictogram when necessary



Remove the pictogram on the unit, select other pictogram you need then insert into slot of panel.

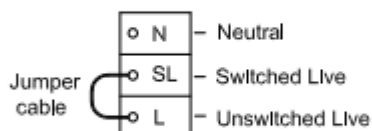
6 Finish installation



Snap AC supply on PCBA and then snap fixture to mounting plate.

Wiring Instructions

Maintained Wiring



Maintained (default operation):

Connect L,N and leave jumper cable connected.

For switched maintained operation, disconnect the jumper cable and connect a switched live to 'SL' terminal.

Non-Maintained Wiring



Non-maintained:

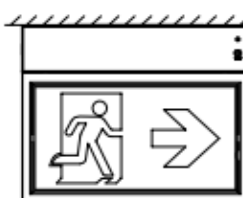
Connect L,N and remove jumper cable.

Mounting Options

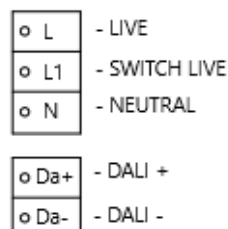
Wall mounting



Ceiling mounting



DALI Wiring



GENERAL INFORMATION

1. A qualified electrician, in accordance with IEE wiring regulations, should carry out connection to mains wiring.
2. Ensure that the rated voltage and frequency requirements are compatible with the available mains supply.
3. Cleaning of reflectors and lenses should be carried out using clean, soft and lint free cloths and anti-static cleaning fluid.
4. Do not carry out high voltage insulation test, i.e. 500/1000v this may damage internal components.
5. Electrically isolate this luminaire during maintenance.
6. Replacing the light source within this luminaire shall only be carried out by the manufacturer, service agent or a similar qualified person.

Specification

Finish	White.
Materials	Polycarbonate Body
IP Rating	IP40
Weight	0.5 Kg
Ambient Operating temp	0° to 45°
Protection Class	II
Power Supply	220-240AC, 50/60 Hz

TECHNICAL SUPPORT

Tel: 0161 331 5700

e-mail: [tech-
nical@whitecroftlight.com](mailto:technical@whitecroftlight.com)

www.whitecroftlighting.com