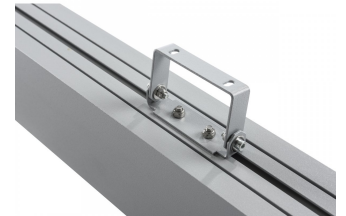


# LED Line Surface

IP66 surface mounted linear luminaire for feature lighting



Mounting Bracket

## Optics

- Light output options:
  - 640mm long, 3148 lumens, 30W
  - 1240mm long, 6297 lumens, 60W
  - 1540mm long, 8096 lumens, 77W
- 4000K LED
- 3000K LED option
- Ra80 colour rendition
- Elliptical distribution for even wall-washing

## Body

- IP66, IK08 protection rated
- Extruded aluminium body with die cast end caps
- Polyester powder coated finished grey RAL 9007 suitable for saline and corrosive environments
- For outdoor applications within 3km of the coast, an enhanced paint finish can be offered on request
- Tempered glass diffuser
- Surface mounting
- Requires mounting brackets
- Brackets adjustable up/down through 90 degrees
- Fixed output driver as standard, DALI dimming option
- Suitable for ambient temperatures between -30 to +40°C

# Order codes

## LED Line Surface

LED Line Surface	Fixed Output	LL/CW	L70
640mm, 3148 lumen	LLSH14K	105	60k
1240mm, 6297 lumen	LLSH24K	105	60k
1540mm, 8096 lumen	LLSH34K	105	60k

## Accessories

ESSENTIAL MOUNTING BRACKETS (PAIR)	LLSBKT
IP67 TEE CONNECTOR	MRCT
IP67 IN LINE CONNECTOR	MRCL

## Options

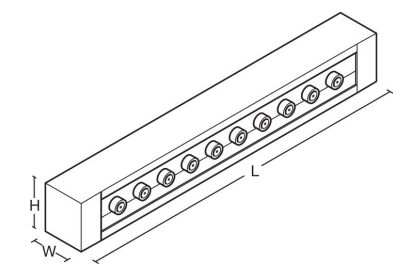
Description	How to change code	For example
DALI dimming	Change 'H' to 'Y'	i.e. LLSY14K
3000K	Change '4K' to '3K'	i.e. LLSH13K

# LED Performance

Colour Temp	RA (CRI)	Colour consistency
4000K	>80	MacAdam 3 SDCM

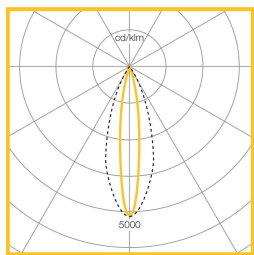


# Dimensions



VERSION	L	W	H	KG
3148 lumen	620	90	70	3
6297 lumen	1240	90	70	5.6
8096 lumen	1540	90	70	6.6

# Photometric Performance



60W 4000k 6297  
Lumens  
LOR = 100.0%

# To Specify

Surface mounted IP66 linear LED luminaire with aluminium housing and elliptical beam distribution. Finished in polyester powder coated grey – as Whitecroft LED LINE SURFACE