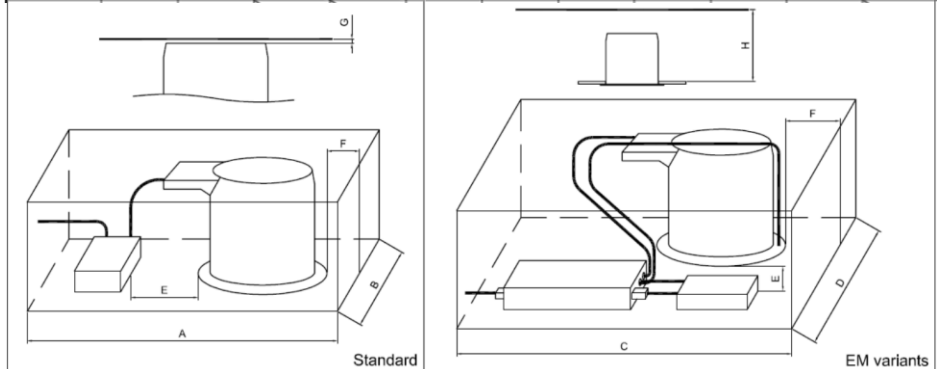


8. DIMENSIONAL INFORMATION

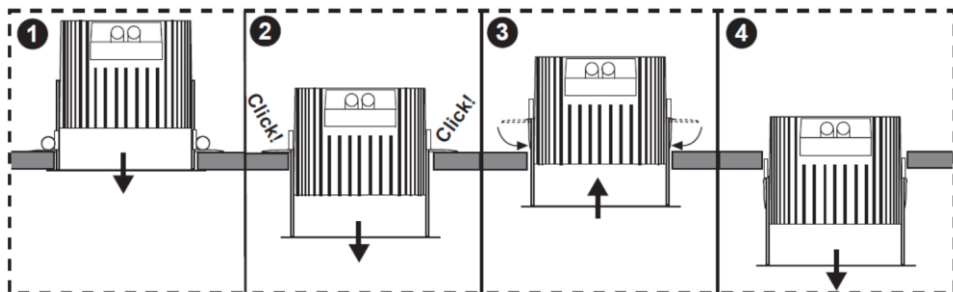
	Without insulating material (mm)		With insulating material (mm)		(mm)		(mm)		(mm)		
	A	B	A	B	C	D	E	F	G	H	
Comfort 1100 lm	400	250	450	300	800	450	100 min	50 min	0	225 min	
Comfort 2000 lm	450	450			800	450	100 min	50 min	0	225 min	



Box space can be covered with insulating see table A-B

9. REMOVAL PROCEDURE

To remove the luminaire pull the unit down (keeping level) until a 'click' is heard from both springs (1 & 2). This de-activates the spring mechanism. Push the luminaire back into the ceiling to allow the spring levers to drop back down (3). The luminaire will now pass through the ceiling aperture.



NOTICES

- 1) A qualified electrician, in accordance with IEE wiring regulations should carry out connection to mains wiring.
- 2) Ensure that the rated voltage and frequency requirements are compatible with the available mains supply.
- 3) Cleaning of reflectors and lenses should be carried out using clean, soft and lint free cloths and anti-static cleaning fluid
- 4) Do not carry out high voltage insulation test, i.e. 500/1000v- this may damage internal components.

TECHNICAL SUPPORT

Telephone: 0161 331 5700

E-mail: technical@whitecroftlight.com

<http://www.whitecroftlighting.com/>

Whitecroft
lighting

Nightingale LED



Recessed LED Luminaire Installation Instructions

PK/LFTNTGLED2

October 2016 - Rev C



Whitecroft Lighting Limited

Burlington Street, Ashton-under-Lyne, Lancashire OL7 0AX
Telephone +44 (0)870 5 087 087 Facsimile: +44 (0)870 5 084 210
www.whitecroftlighting.com

Registered No. 3848973 England

Registered Office: As above

1. SPECIFICATION

Lamp types LED – 1100 (3000K & 4000K) & 2000lm (3000K & 4000K)

Materials Aluminium casting (black), PC reflector ring (white RAL 9003)

Supply 240V

Power 1100 lumens (3000K / 4000K – 12W)
2000 lumens (3000K / 4000K – 22W)

Operating temp 0°C to 25°C

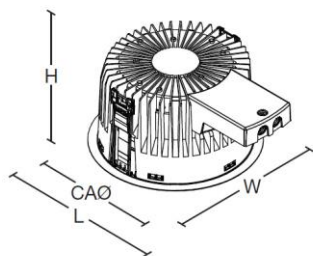
Connection 1100lumen & 2000lumen – Terminal block 0.5mm² to 1.5mm²


Ingress protection IP44 (from below)
IP64 can be achieved with disc attachment

Ceiling Thickness

- 5mm to 50mm. Note: if a 5mm soft ceiling tile is used, it is recommended that a separate pattress is to be used in addition (Whitecroft Lighting part reference - MLA-PAT)

2. DIMENSIONS (LUMINAIRE HEAD)



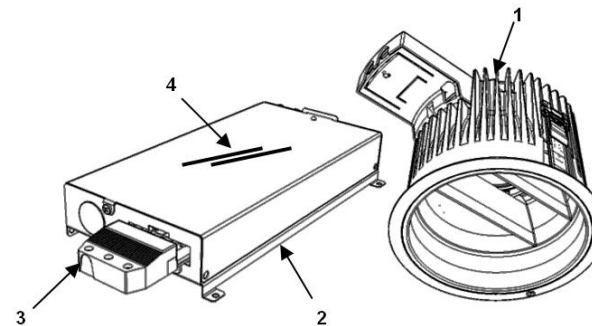
Version	L	W	H	CAØ	KG	KG 
Comfort	232	183	137	165	1.35	2.9

3. BOX CONTENTS

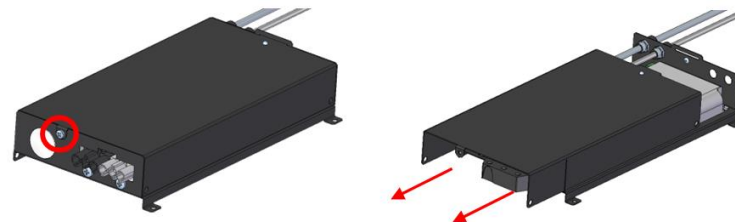
In the box you should find the following parts:

Standard 1-10V, EM, ET, COM EPS

1. Luminaire Head
2. Standard / Emergency Gearbox
3. Female GST 6-Pin Plug
4. Link Wires (DALI/COMEPS only)



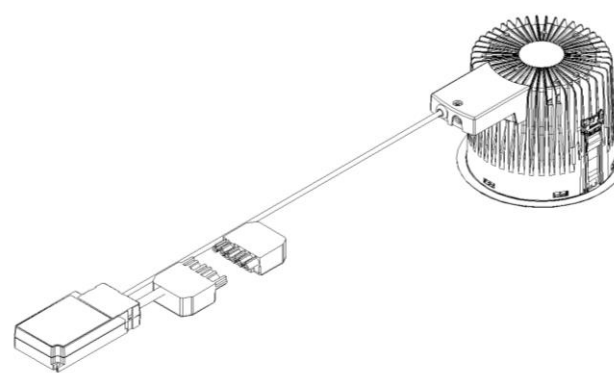
Open the gearbox by removing the highlighted screw and sliding the cover off, as shown below:



Please note that for 1-10V variants the remote box does not need to be opened.

For standard Dali

1. Luminaire Head
2. Dali driver with attached 6 pole connector
3. Female GST 6-pin plug

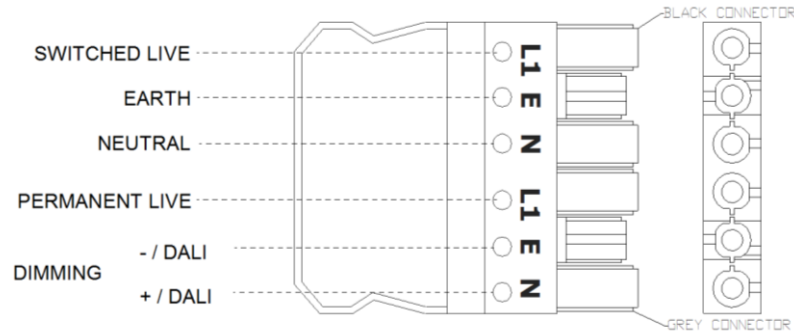


4. NON-EMERGENCY LUMINAIRE: WIRING-IN

For wiring-in to a Non-Emergency fitting, follow these instructions:

Remove the *female GST plug* from the *gearbox*, and disassemble to allow mains wiring in.

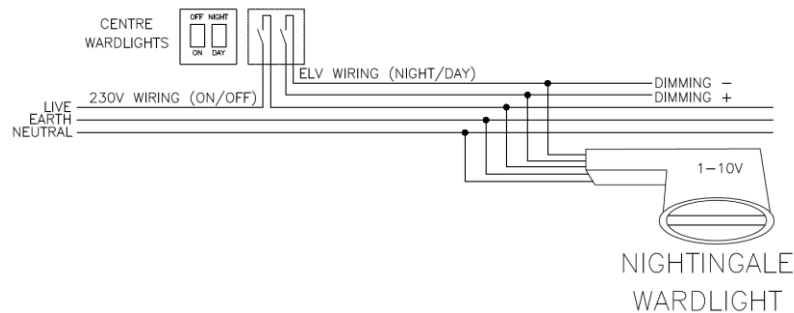
Ensure mains power is disconnected, and then wire into the plug using the following diagram:



Replace and secure plug cover, then re-insert the plug into the socket on the gearbox.

Now, go to Section 7.

NIGHT & DAY CONNECTION DIAGRAM



5. EMERGENCY LUMINAIRE: WIRING-IN

NORMAL EM & EASYTEST VERSIONS

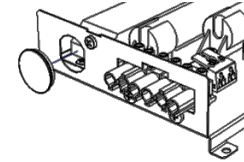
Remove, disassemble and wire the *Female GST plug* as shown in the diagram in **Section 4**.

Remove the *gearbox lid* as shown in **Section 3**, connect the batteries to the inverter by connecting the two loose red & black leads together, then replace the *gearbox lid* and secure with screw. **Now, go to Section 6.**

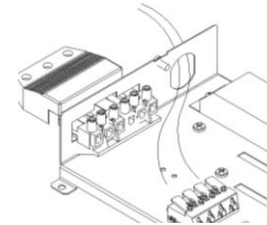
COMEPS VERSIONS - SEPARATE DALI EMERGENCY TEST & ANALOGUE / DALI CONTROL

Remove, disassemble and wire the *Female GST plug* including controls pair, as shown in the diagram in **Section 4**.

Remove the gearbox lid as shown in **Section 3**, and then remove the white rubber grommet from the hole on the end of the *gearbox*.



Feed the DALI emergency test coms cables through the hole and into the terminal block shown below.



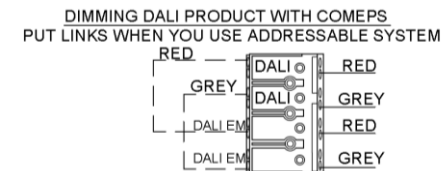
Connect the batteries to the inverter by connecting the two loose red & black leads together, then replace the *gearbox lid* and secure with screw. **Now, go to section 6.**

COMEPS VERSIONS- INTEGRATED DALI EMERGENCY & DALI DIMMING CONTROL

Remove, disassemble and wire the *Female GST plug* including dimming/EM test coms. pair, as shown in the diagram in **Section 4**.

Remove the gearbox lid as shown in **Section 3**, then use the included *Link Wires* to bridge across the terminals as shown below:

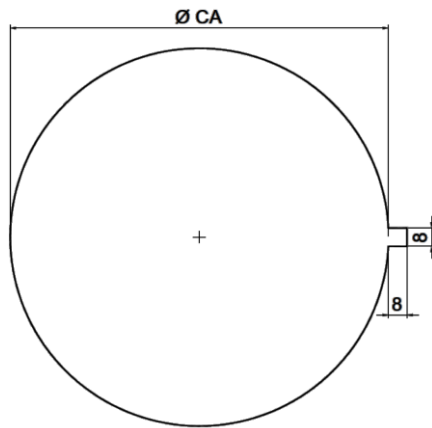
FOR COMEPS OPTIONS:



Connect the batteries to the inverter by connecting the two loose red & black leads together, then replace the *gearbox lid* and secure with screw. **Now, go to Section 6.**

6. INSTALLATION

Cut a ceiling aperture to 165mm diameter (+/- 1mm), including an 8mm square notch as detailed in the diagram below to allow room for the LED battery status indicator.

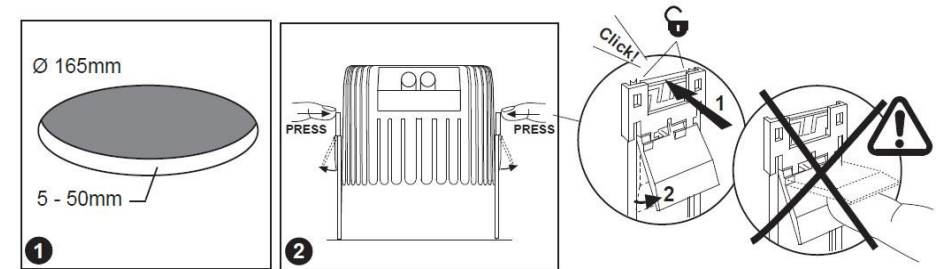


Now go to **Section 7**, bearing in mind that as the luminaire head is inserted into the ceiling, the LED indicator should be lined up with the 8mm square notch as shown in the image below.

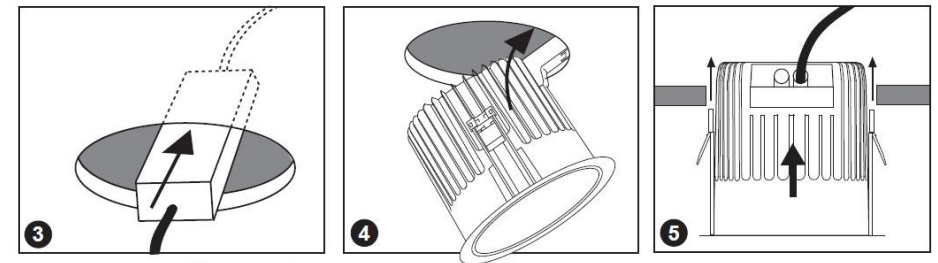


7. INSTALLATION (ALL VERSIONS)

1. Cut a ceiling aperture to 165mm diameter (+/- 1mm).
2. Activate the mounting springs by pressing the area illustrated in diagram 2. A click should be heard and the spring levers will rise into the 'mount' position. Be very careful not to touch the spring while it is in this state.



3. Feed the gearbox followed by the luminaire unit into the ceiling aperture until it is straight and the spring levers are beyond the ceiling (diagrams 3 – 6).



4. Gently pull the luminaire unit down, keeping it level; this will activate the mounting springs, and the unit will level itself and be secured into position (diagrams 6 – 8).

