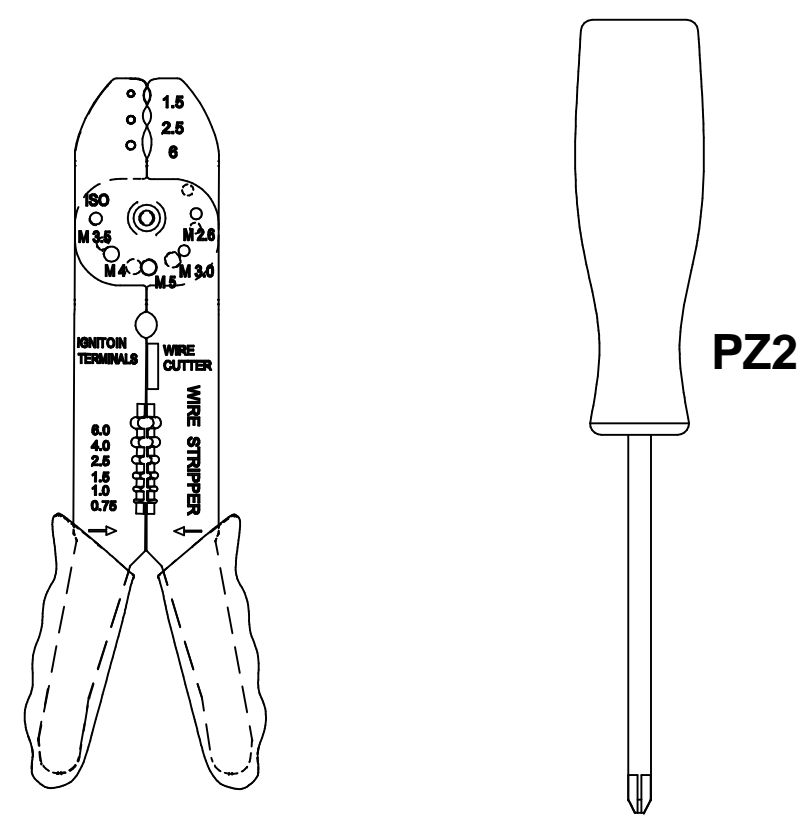


SPECIFICATION

Lamp type	N/A
Finish	RAL 9003
Materials	0.7mm Mild Steel
Weight	Std 4.20kg, Emin 4.60kg.
Operating temp	0-30C
Connection	2.5mm² input terminal block
Ingress protection	FRONT IP44 REAR IP20

TOOLS NEEDED FOR
INSTALLATION



GENERAL INFORMATION

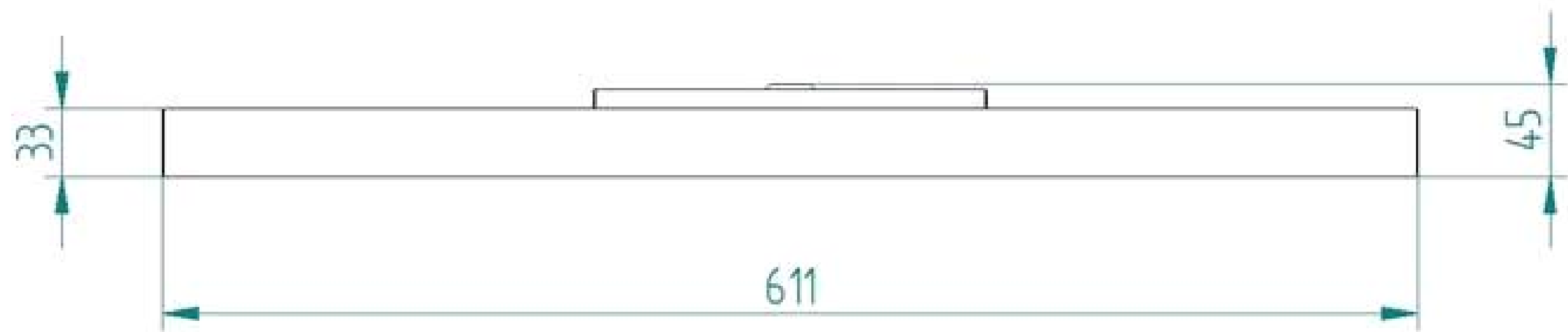
- 1) A qualified electrician, in accordance with IEE wiring regulations should carry out connection to mains wiring.
- 2) Ensure that the rated voltage and frequency requirements are compatible with the available mains supply.

SUSPENSION CENTRES

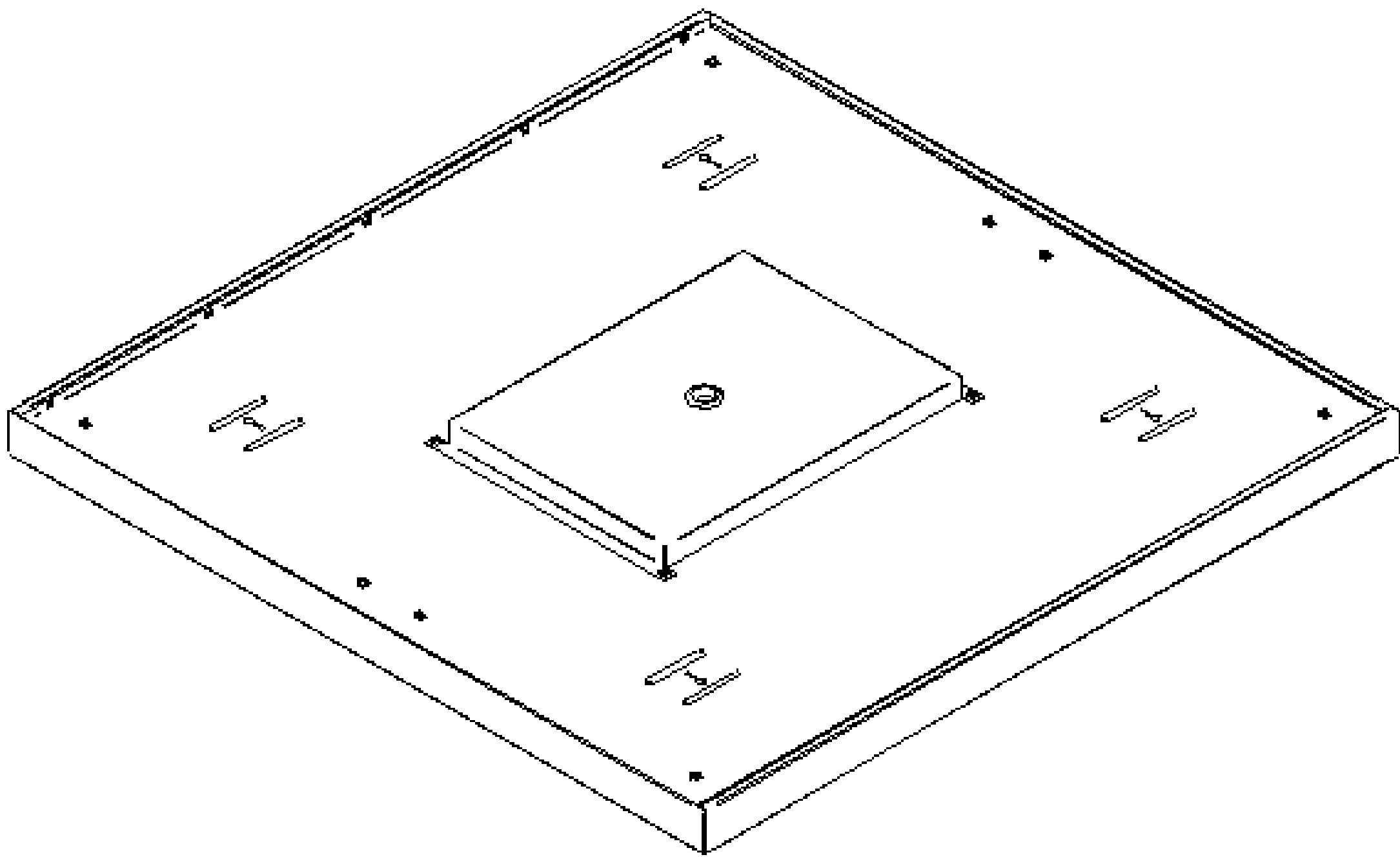
2 x cental suspension points at 400mm at spacing

OVERALL DIMENSIONS

LENGTH	-	611mm
WIDTH	-	611mm
HEIGHT 1	-	33mm (STD)
HEIGHT 2	-	45mm (Emergency)



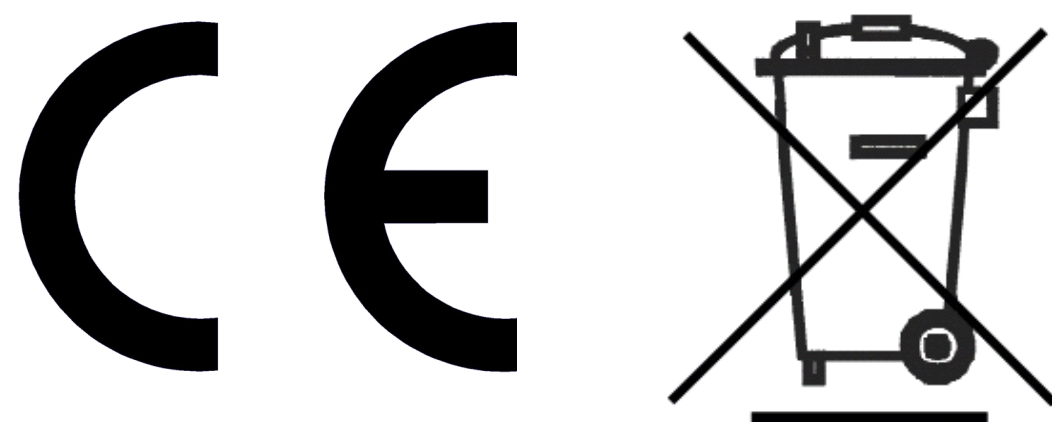
TEGAN SLIM 600SQ
Suspended Frame



Installation Instruction

PK/NPD130-IL

Nov 2020- Rev C

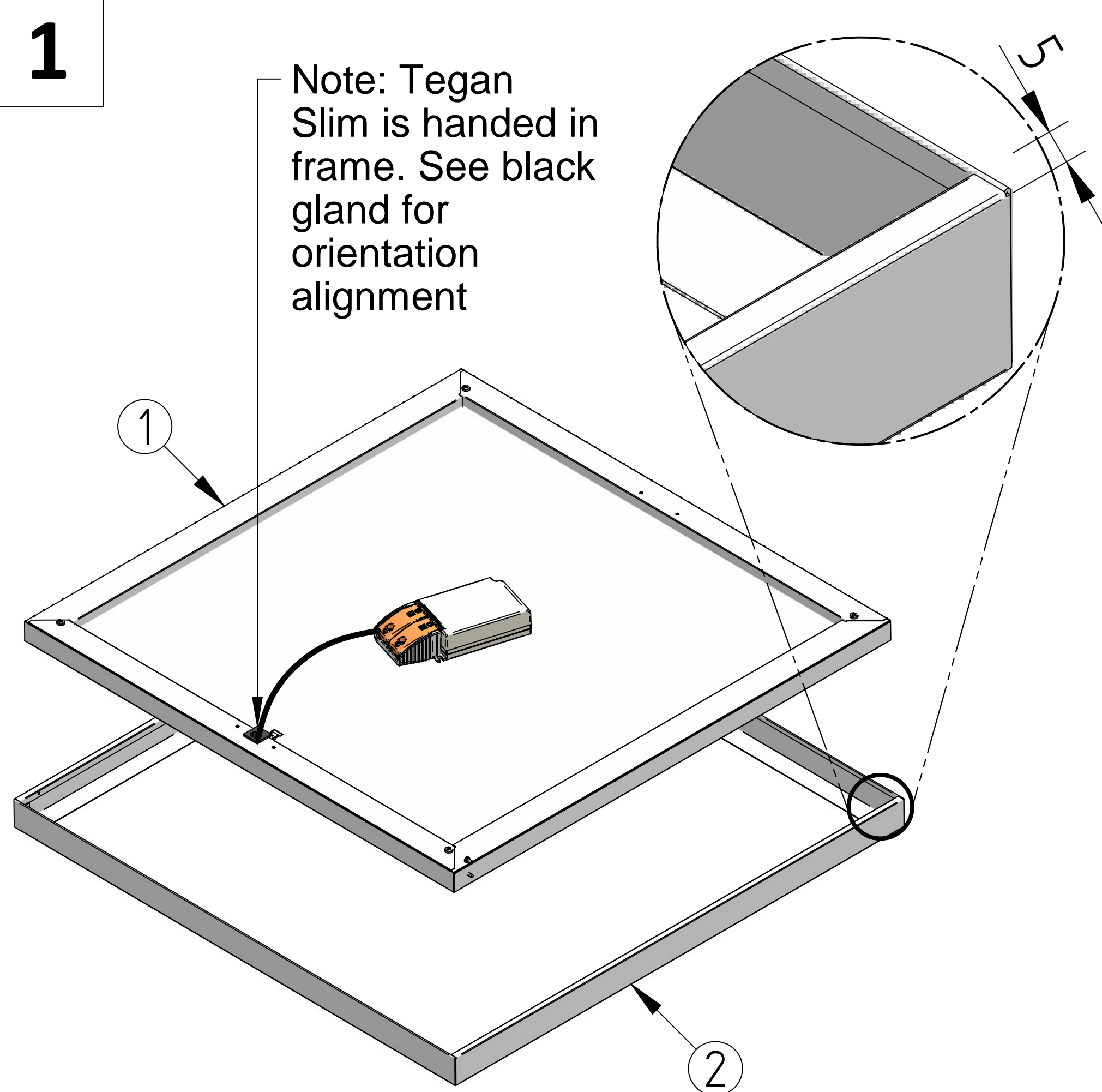


Whitecroft Lighting Limited

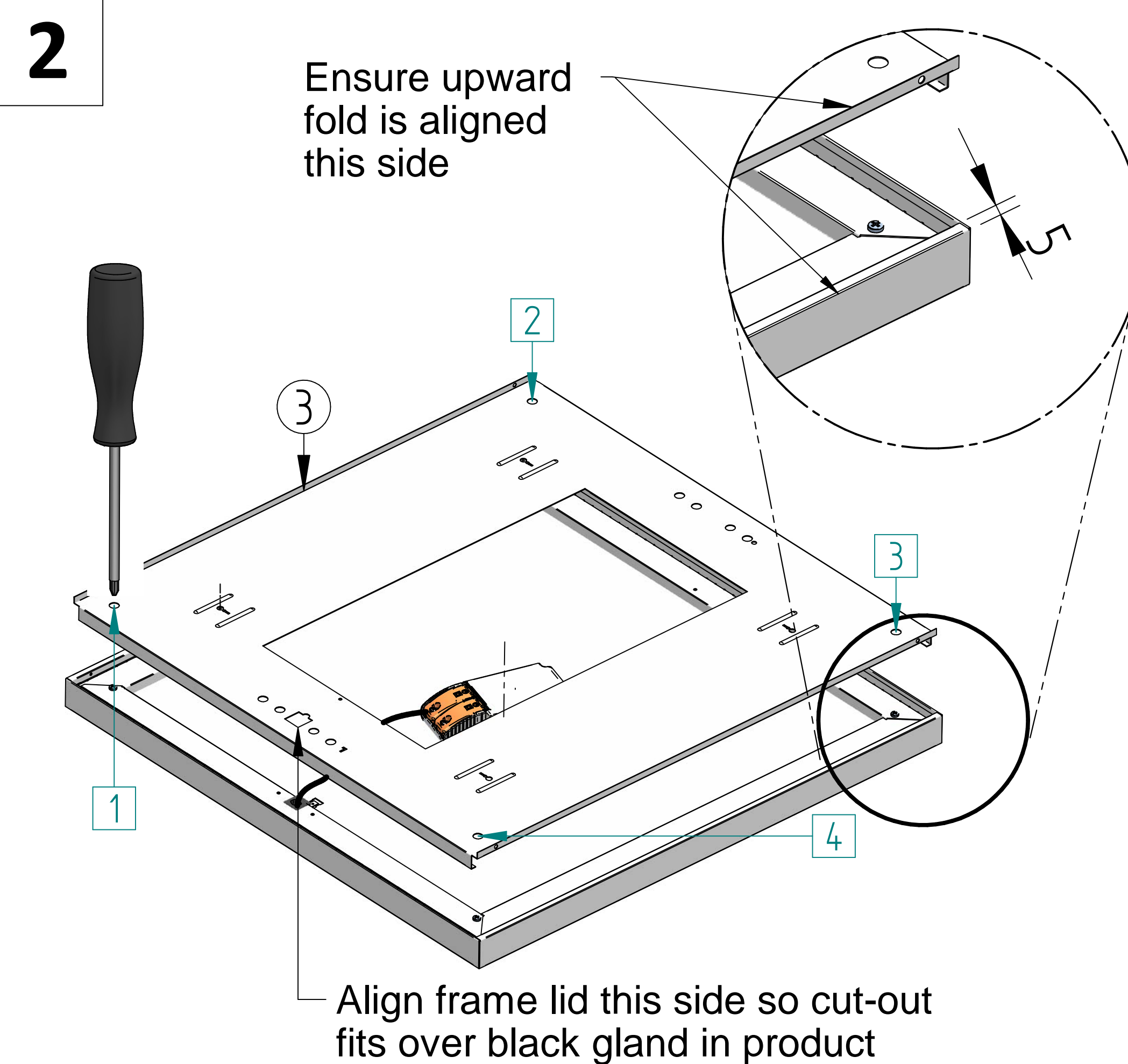
Burlington Street, Ashton-under-Lyne, Lancashire OL7 0AX
Telephone +44 (0)870 5 087 087 Facsimile: +44 (0)870 5 084 210
Registered No. 3848973 England Registered Office: As above

STANDARD TEGAN SLIM FRAME ASSEMBLY

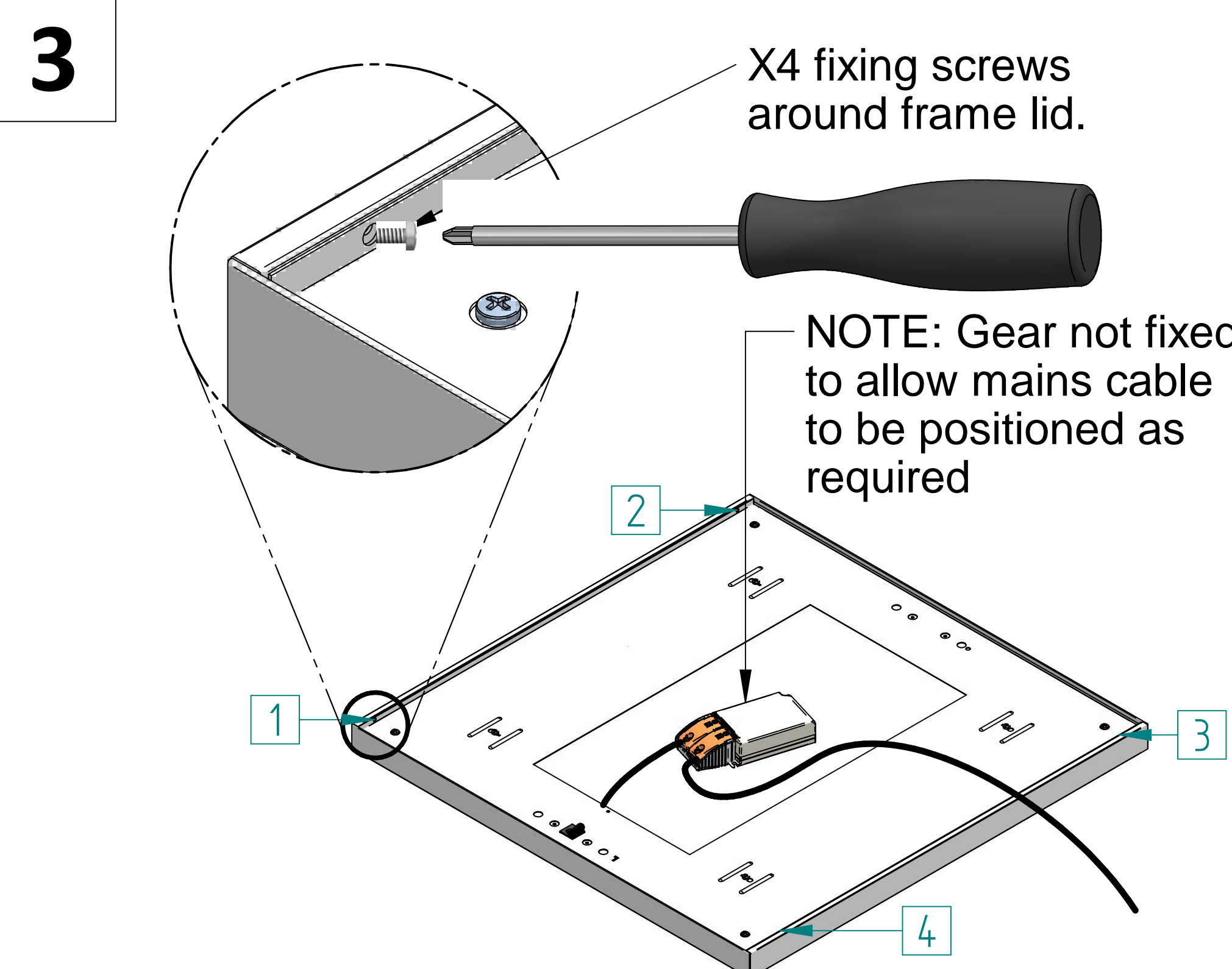
For electrical wiring details refer to Tegan Slim installation leaflet



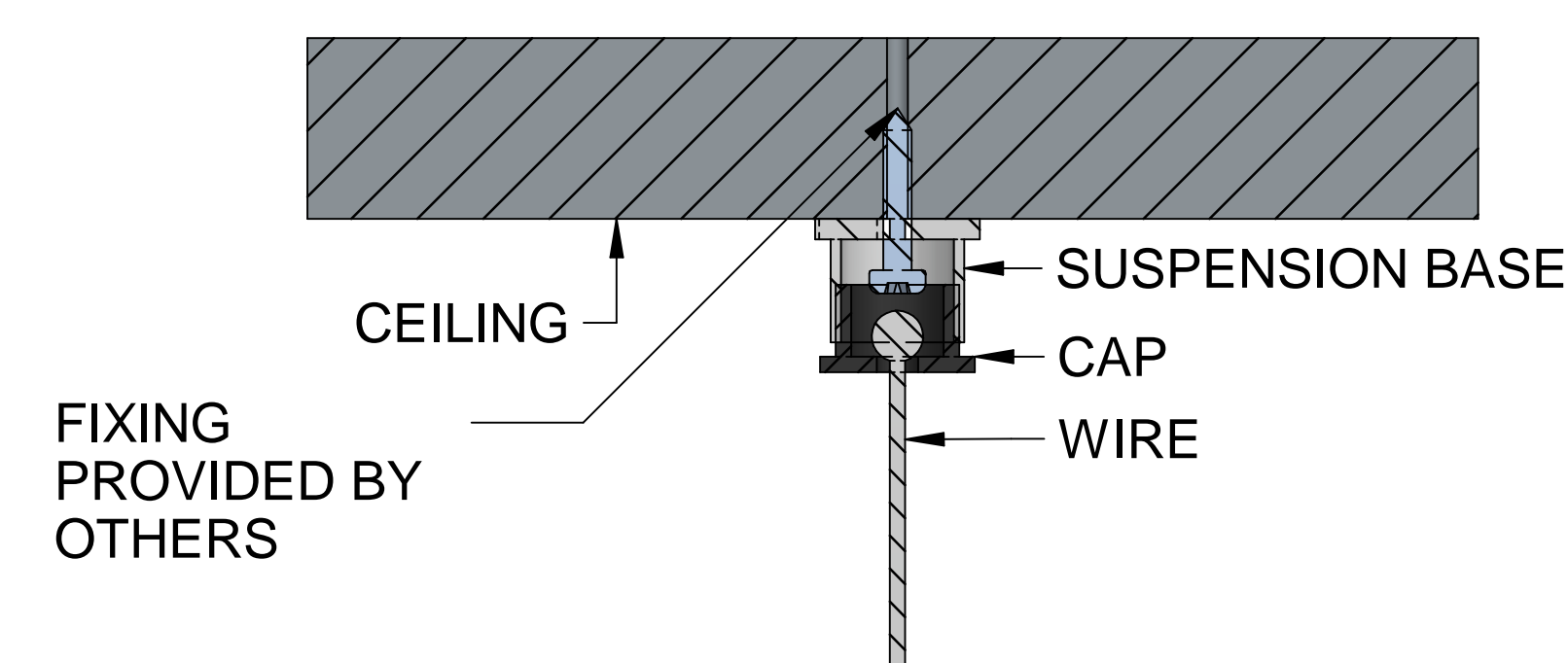
1. Place standard Tegan Slim (1) into front frame (2). See illustration for correct orientation.



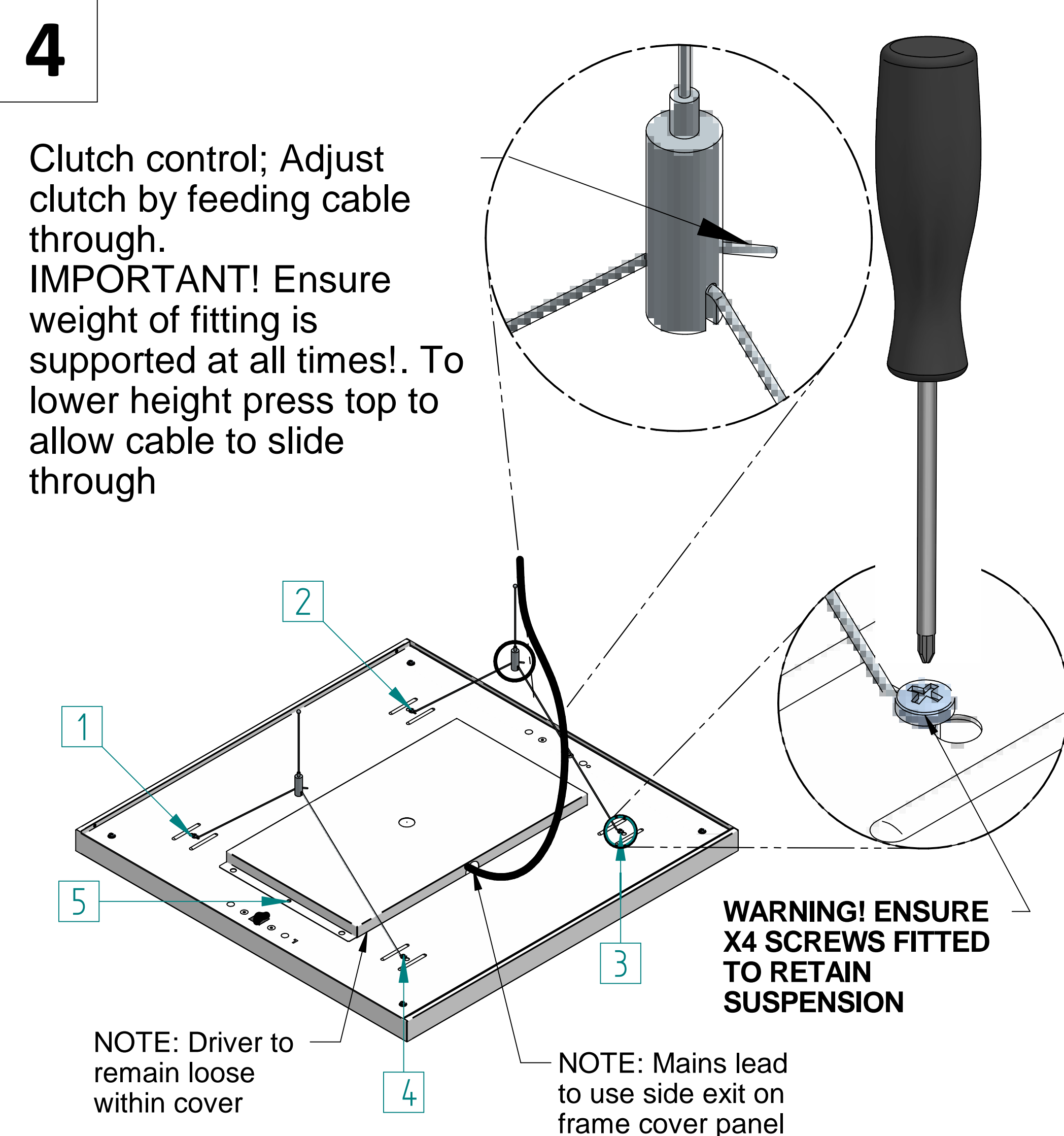
2. Feed LED driver through frame lid and centralise the lid within the frame. See illustration for correct orientation. Fix lid to Tegan Slim using the 4 x M4x8MM screws provided.



3a. Fix further 4 screws into locations shown to lock back panel to front frame (1-4).



3b. Attaching the suspension kit; Drill the surface for the suspension ceiling base, for suspension centres see overleaf. Attach the suspension base using fixing provided by others and feed the drop wire through the ceiling cap before screwing onto the suspension base.

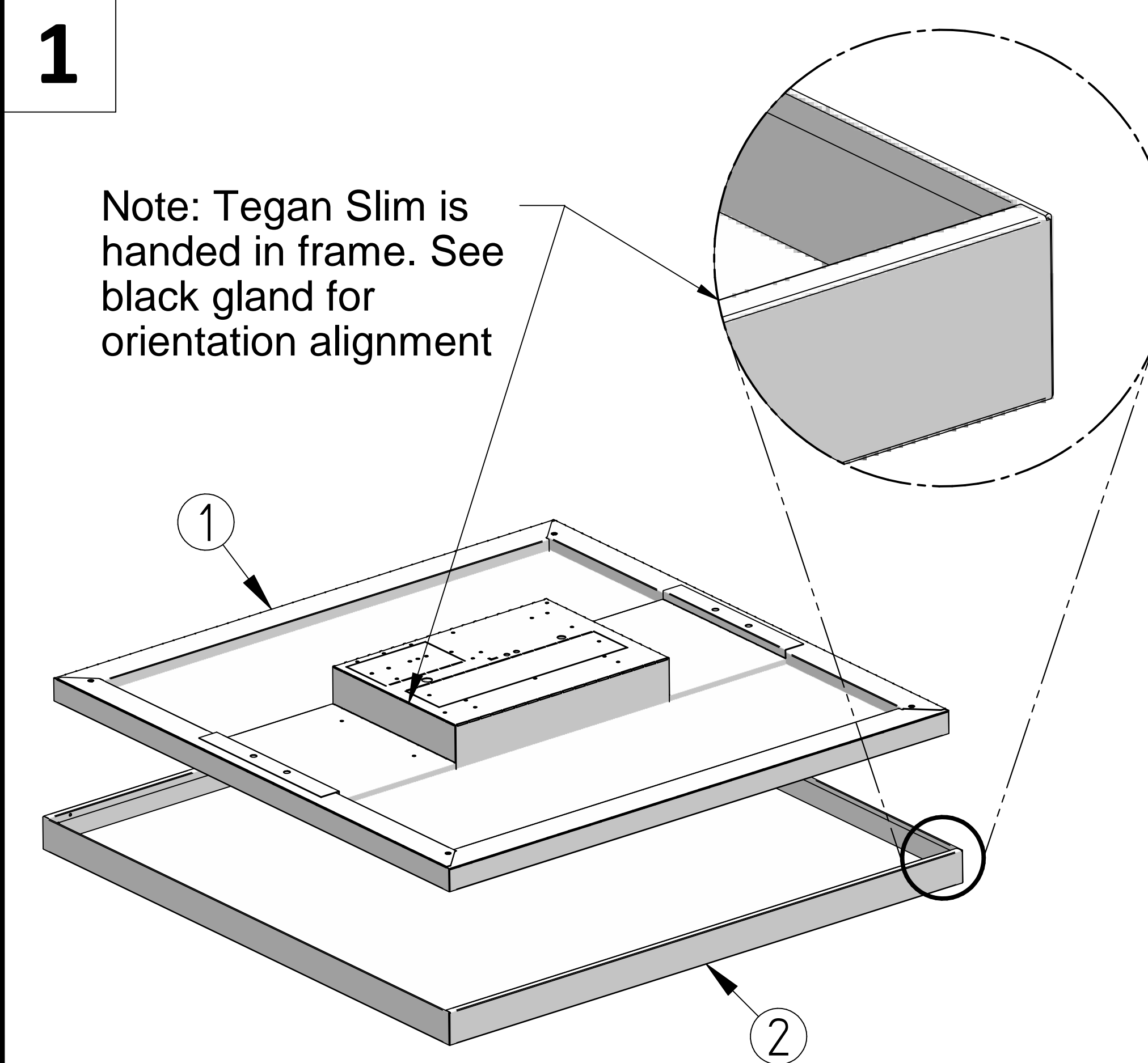


4a. Suspend fitting and retain suspension with 4 x M4x8MM machine screws provided in position 1-4, as shown. Next balance using a spirit level or suitable method.

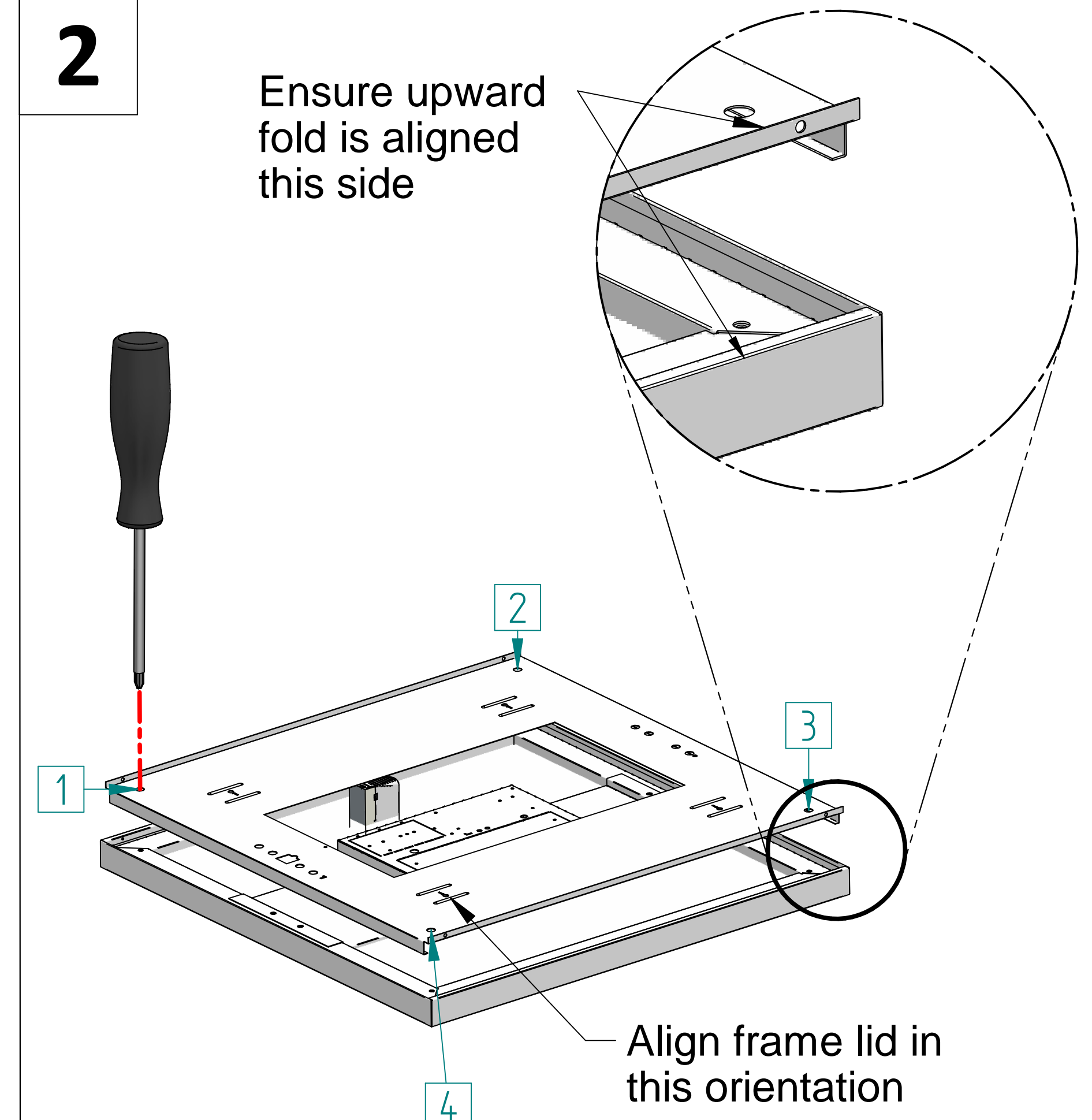
4b. Raise the fitting to the correct height from ceiling, please note that the recommended maximum suspension height is 1.5M. Next wire mains cable into driver, see Tegan Slim installation leaflet for wiring details. Fix cover panel using 1 x M4x8MM machine screw in position 5. If using cable ties on mains lead take care that fitting remains balanced. Ensure side exit is used on cover panel for flying lead.

EMERGENCY TEGAN SLIM FRAME ASSEMBLY

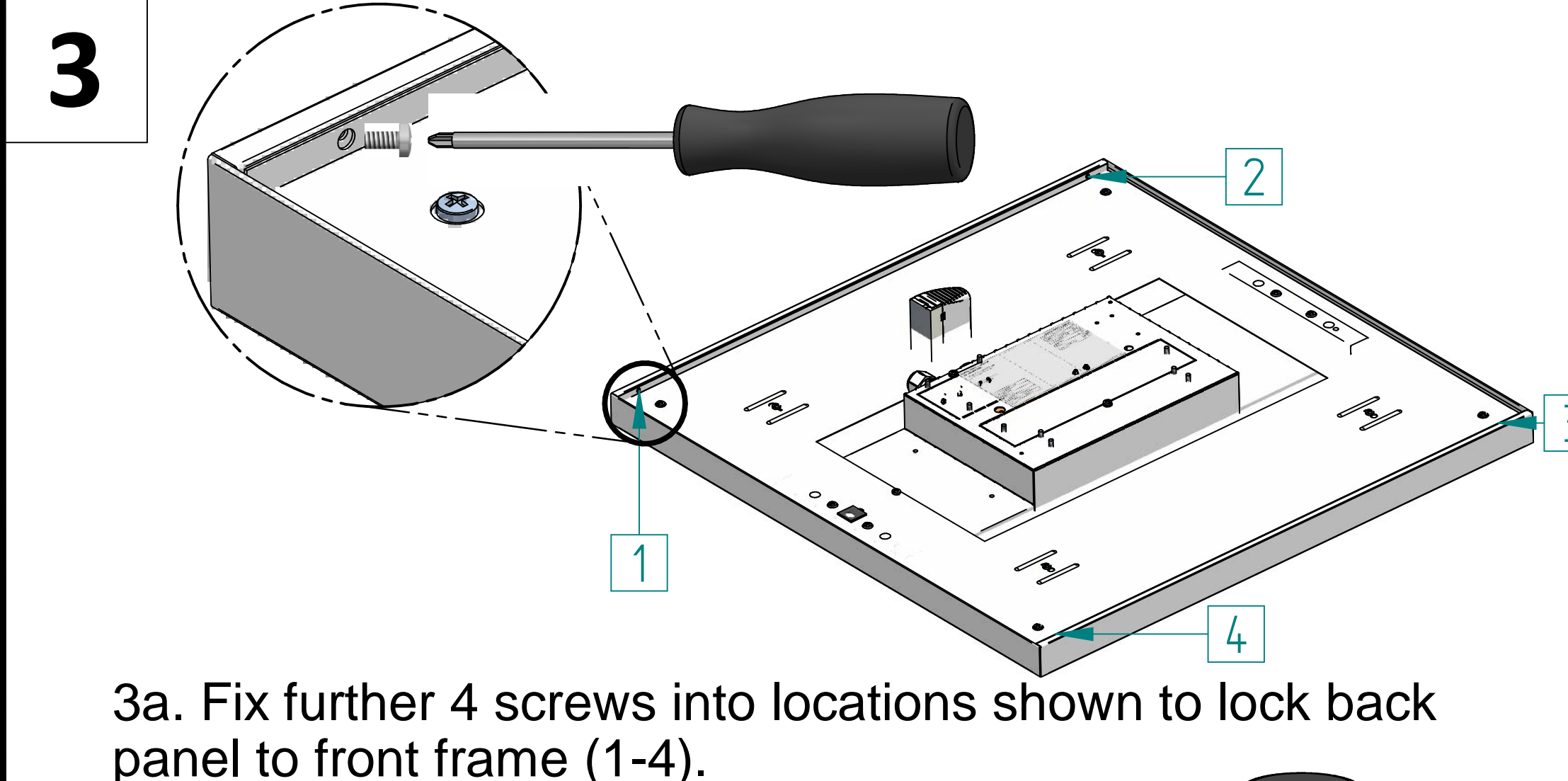
For electrical wiring details refer to Tegan Slim installation leaflet



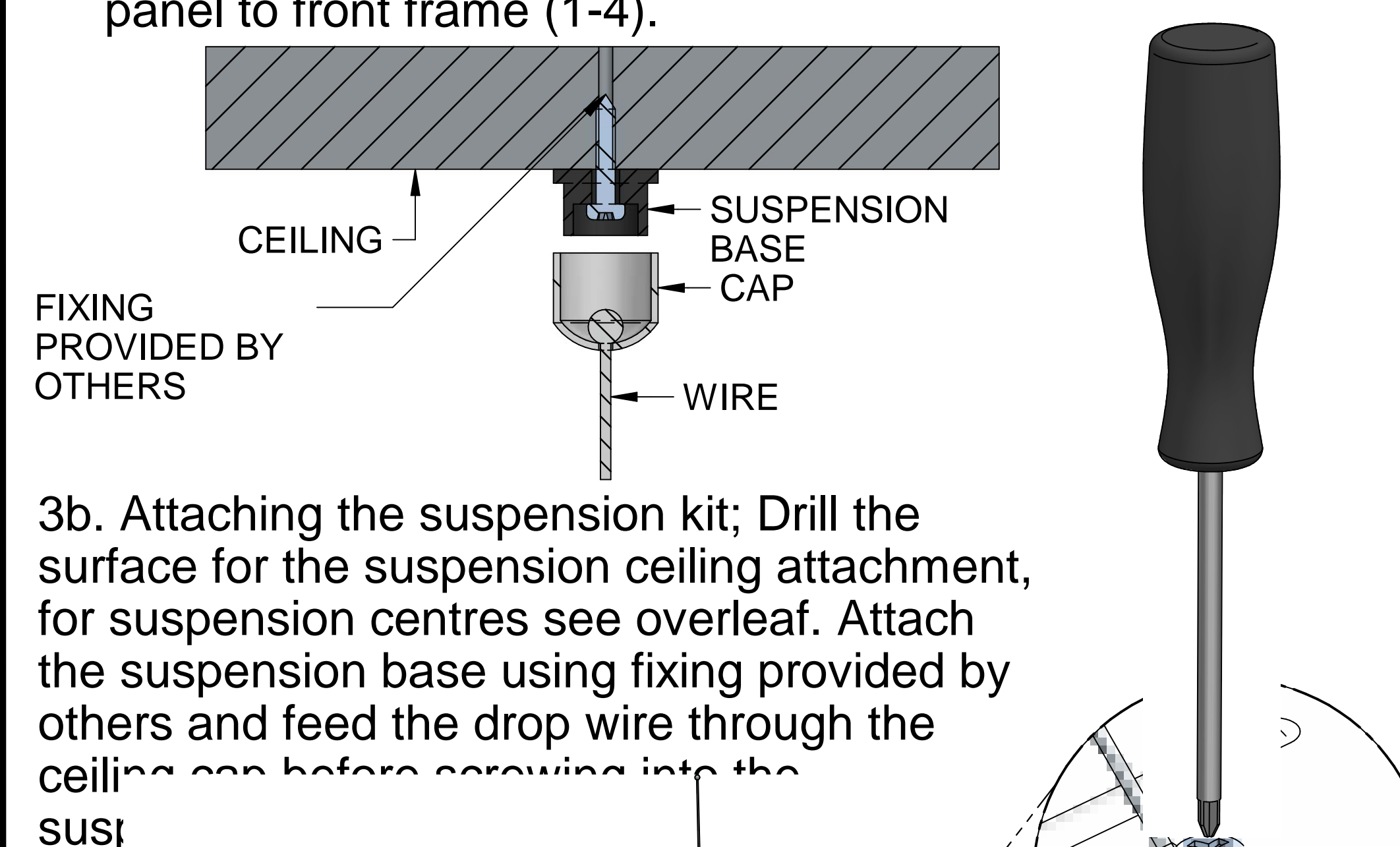
1. Place Emergency Tegan Slim (1) into front frame (2). See illustration for correct orientation.



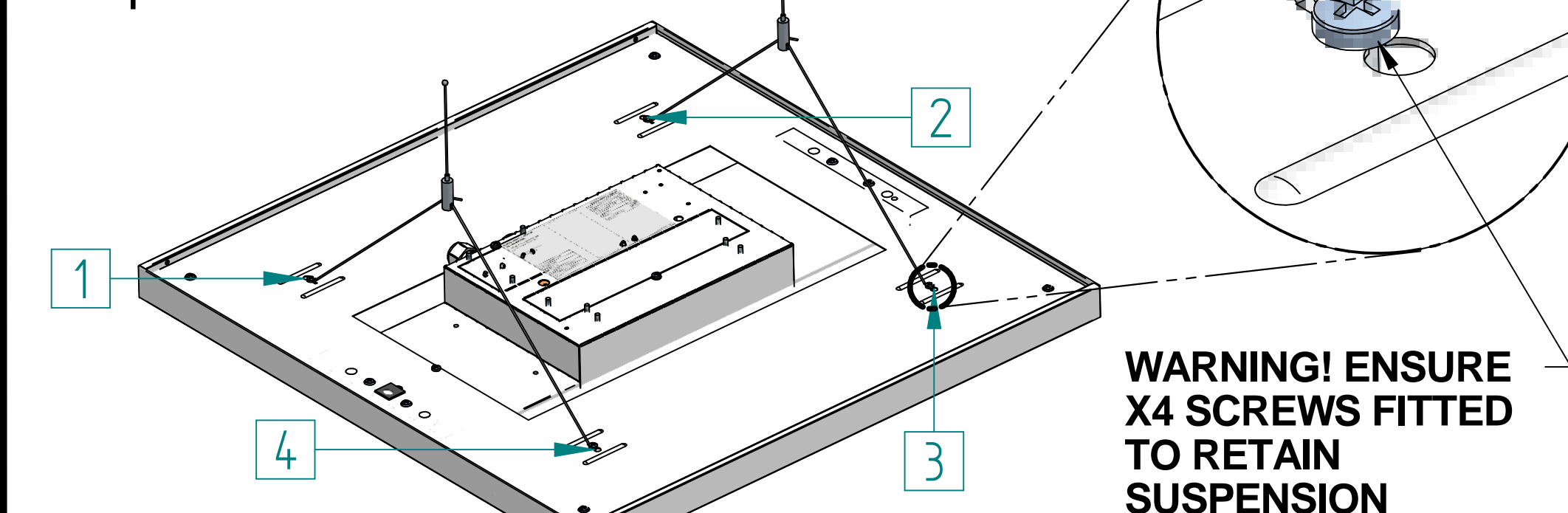
2. Attach lid to frame using 4 x M4x8mm provided. See illustration for correct orientation



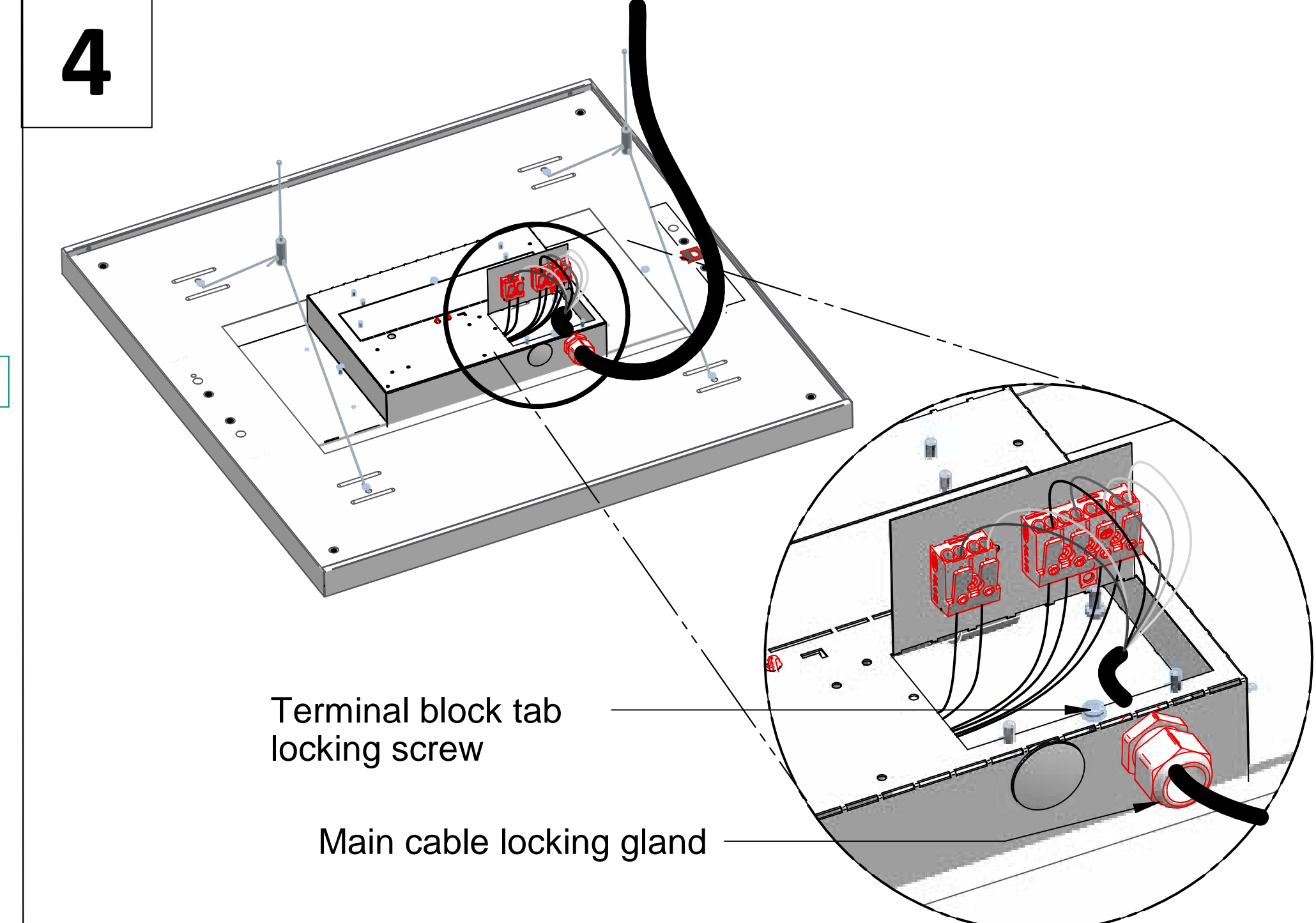
3a. Fix further 4 screws into locations shown to lock back panel to front frame (1-4).



3b. Attaching the suspension kit; Drill the surface for the suspension ceiling attachment, for suspension centres see overleaf. Attach the suspension base using fixing provided by others and feed the drop wire through the ceiling cap before screwing into the suspension base.



4a. Suspend fitting and retain suspension with 4 x M4x8MM machine screws provided in position 1-4, as shown. Next balance using a spirit level or suitable method.



4. Remove fixing screw and lift up lazy fold terminal hatch as shown. Remove one or both grommets and attached cable clamp (supplied by others) into 20mm hole. Re-fold lazy bend terminal hatch cover and attached screw to lock in place

Table of Content - TESSUSFRKIT

