



A Fagerhult Group Company

New Build

Complete solution, complete partnership



SCIENCE
BASED
TARGETS

DRIVING AMBITIOUS CORPORATE CLIMATE ACTION

THE NET
ZERO
STANDARD

APPROVED NET-ZERO TARGETS



Solutions built around you

We're committed to building long-term relationships. It's why we build our solutions around your needs.

SBTI

A verified methodology to reducing our carbon impact, and yours.



Whitecroft Ignite

Igniting action amongst our people, community, partners and industry.



Social value

Making a difference on our doorstep and yours.



A track record of excellence



Bam Western
Environmental Award



Willmott Dixon Building on
Better National Awards
Goods Partner of the Year

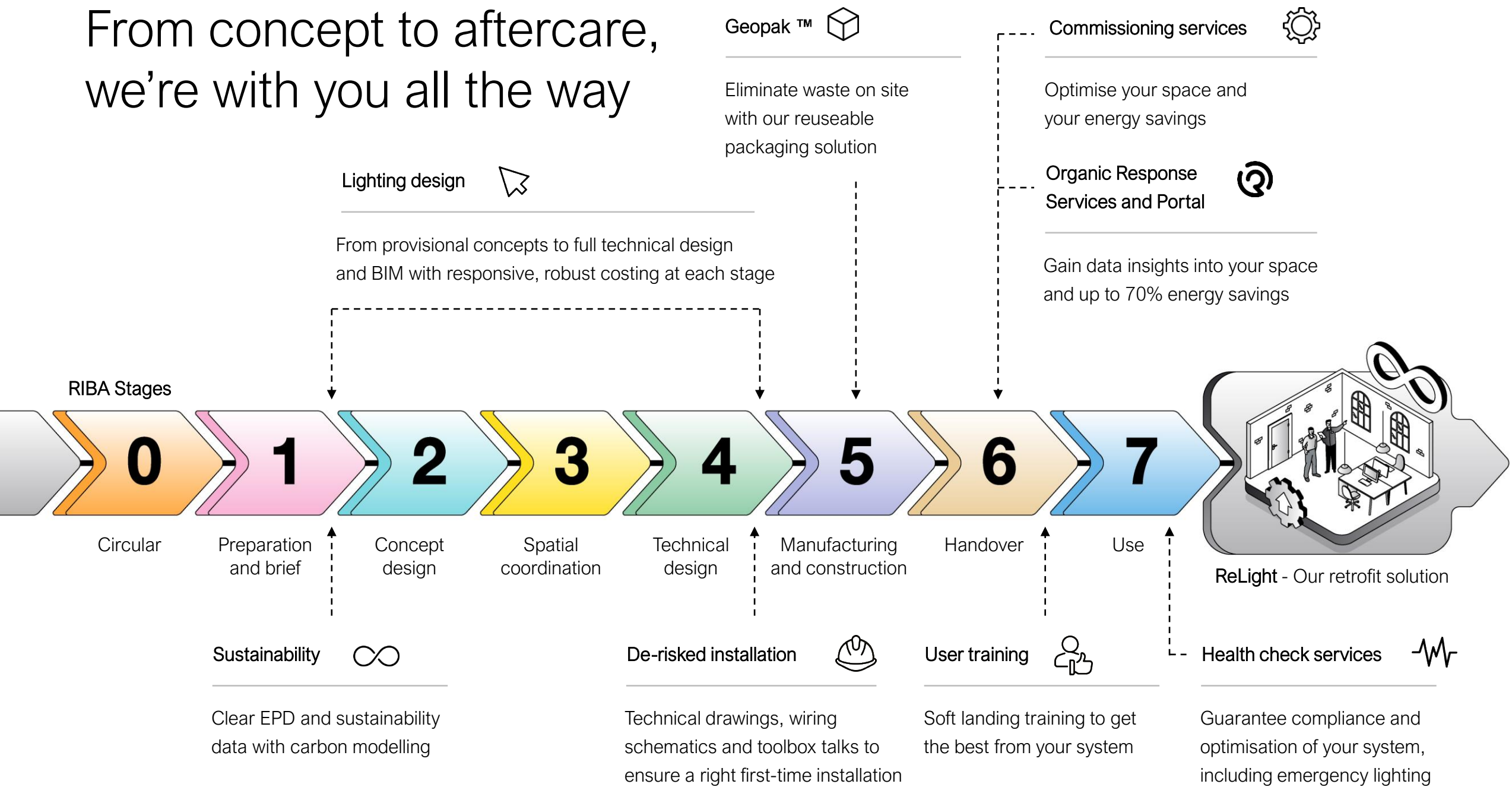


Willmott Dixon
Construction South
Goods Partner of the Year



CIBSE Building
Performance Awards
CIBSE Embodied Carbon
Award

From concept to aftercare, we're with you all the way



How we de-risk your project

Company

Fagerhult Group

Part of a global network of lighting specialists

Expertise



Experienced
Lighting design

Product

Modular

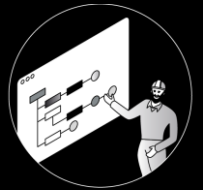
install and maintenance



Delivery & support

Dedicated project manager

from pre-order to post install



UK
Design and manufacturing

Sector expertise



Quality
components



Geopak™

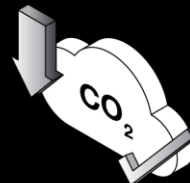
The reusable packaging solution with GPS location tracking

UK & Europe

supply chains



Verified
Low carbon



organic response

Smart lighting made simple

Pre-installation services

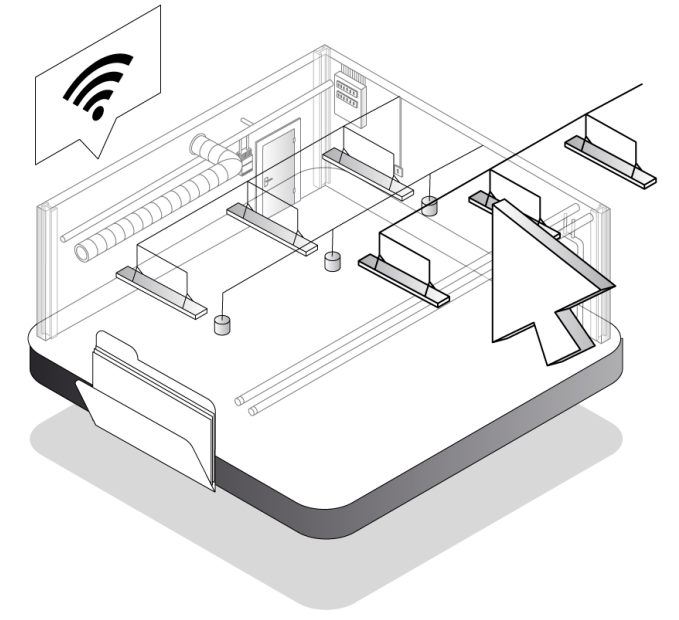
Support for right first time installs





Lighting design

We don't just understand the standards; we help write them



Work directly with our team

Collaborate directly with our team of over 40 designers, including CIBSE / LIA qualified lighting professionals



Guaranteed full compliance

Defining standards for WELL / CIBSE



Trusted in our sectors

We're the go-to for challenging projects

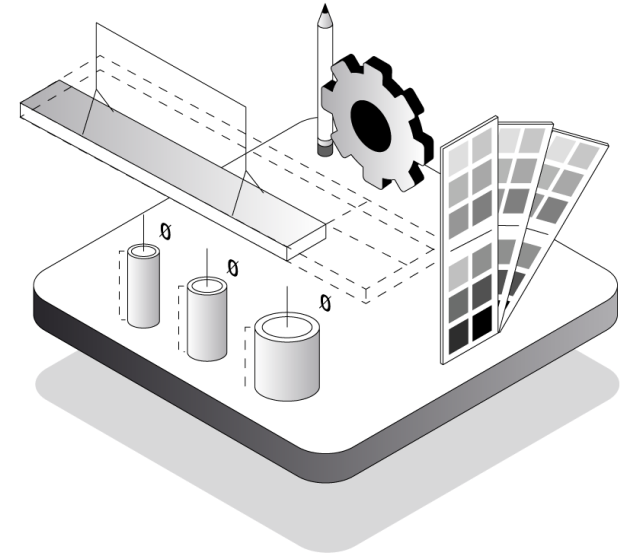


Custom Made

Your vision, made real

The days of one size fits all are long past. Our Custom Made solution ensures uniqueness always comes as standard.

We have the in-house design and manufacturing expertise to push the boundaries and make your vision a reality.



Look

Achieve the aesthetic that meets your design vision



Feel

Create the light quality you want



Fit

Seamless fit, even for heritage spaces

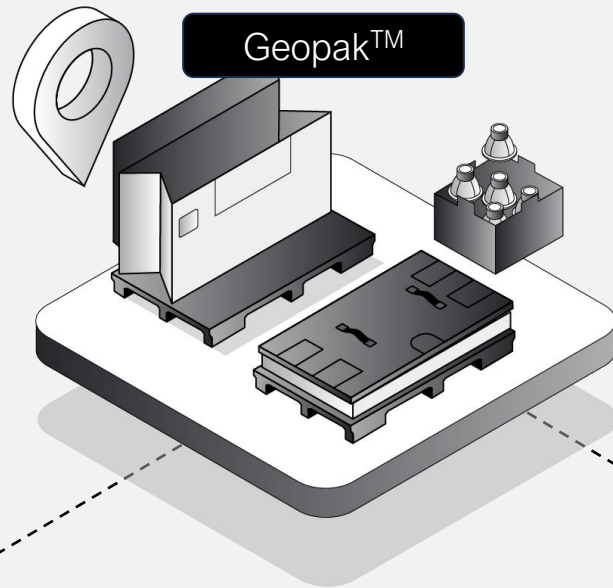


Performance

Our trusted compliance and sustainability performance

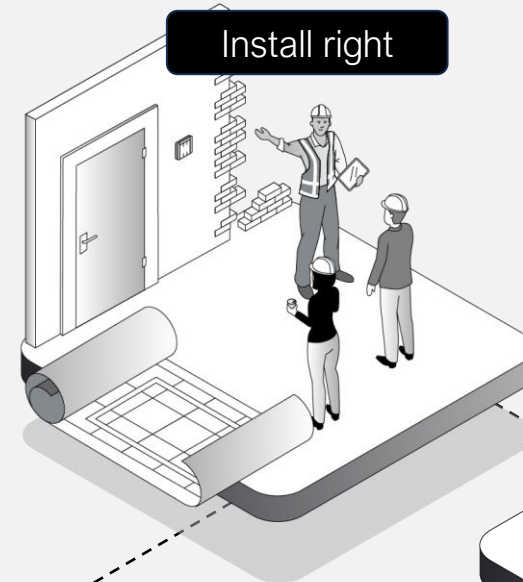
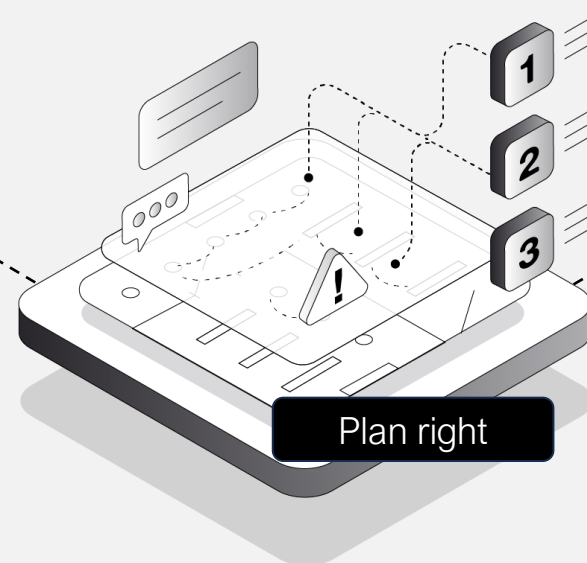
Post-order services

Supporting your needs on site



Eliminate waste

With Geopak™, our re-usable packaging solution



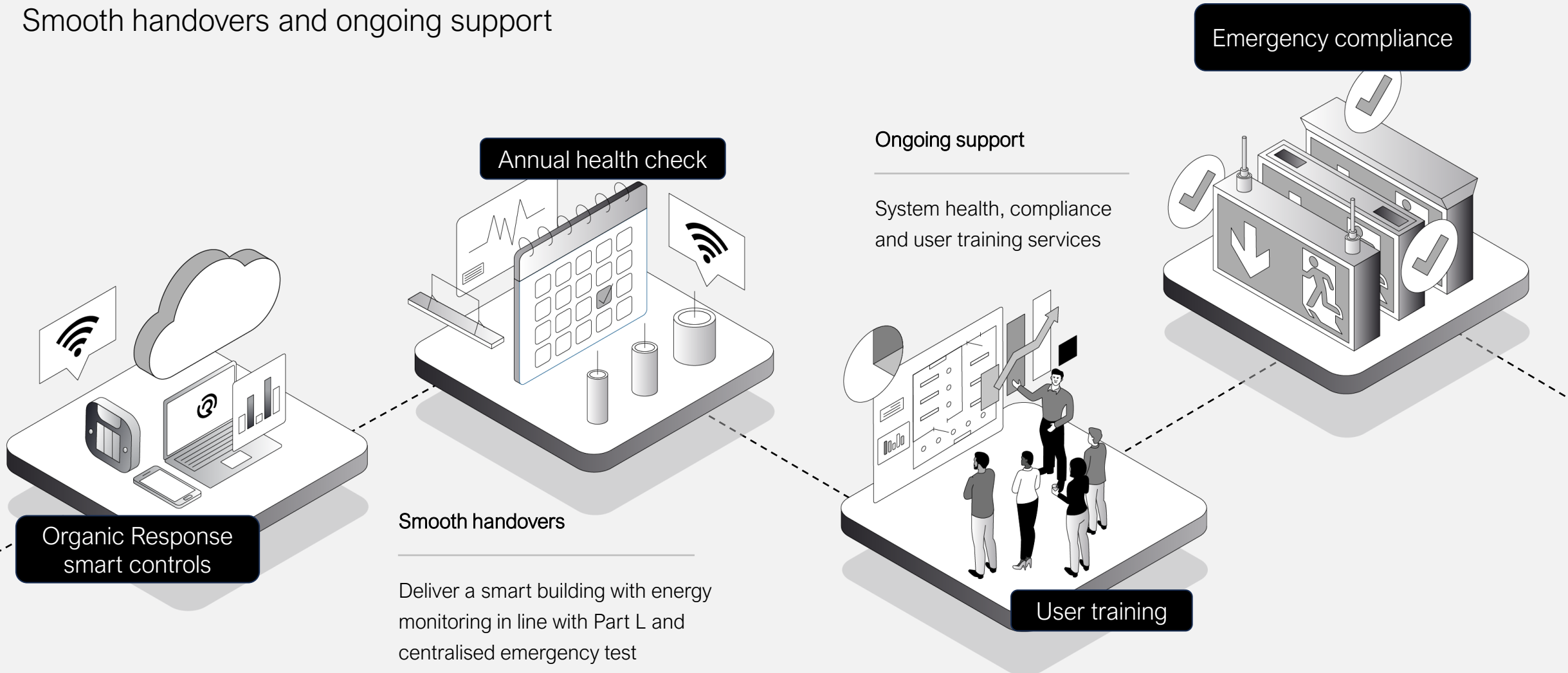
Eliminate risk

With our range of pre and post installation training and commission services



Smart optimisation services

Smooth handovers and ongoing support



Experts in Major Projects

Case studies

[More case studies](#) ▶



Nuclear Lighting: Hinkley Point C

Finding a solution for the most challenging environment

[Read more](#) ▶



Sandwell Aquatic Centre

How do you make sure everyone has a glare free, perfect view?

[Read more](#) ▶



Manchester Airport T2

Perfect design meets perfect performance in a state-of-the-art terminal

[Read more](#) ▶



Everton Stadium

A stadium sized solution for the salty seaside air

[Read more](#) ▶

Experts in education

Case studies

[More case studies](#) ▶



West Coventry Academy

How do you make a Net Zero Carbon (NZC) school?

[Read more](#) ▶



The Charter School

An outstanding learning environment with every space considered

[Read more](#) ▶



Wallyford Learning Campus

Our 'one-stop-shop' solution lighting and controls for multi-use spaces

[Read more](#) ▶



Manchester Engineering Campus

When exposed M&E is part of the design, it has to be beautiful

[Read more](#) ▶

Experts in healthcare

Case studies

[More case studies](#) ▶



Southmead Hospital

A bespoke circular solution, saving our partner time and money

[Read more](#) ▶



Royal Papworth Hospital

Balancing user experience, infection control and sustainability

[Read more](#) ▶



North View Hospital

Maximising comfort in a mental health hospital (MSU compliance)

[Read more](#) ▶



New South Glasgow Hospitals

Playing our part in Scotland's biggest every NHS building project

[Read more](#) ▶

Experts in workspace

Case studies

More case studies ▶



Killean Business Park

How do you light for multiple uses while keeping a minimal look?

Read more ▶



80 New Bond Street

A sustainable transformation in the heart of London

Read more ▶



Featherstone

Lighting a multi-award winning intelligent net-zero building

Read more ▶



Project Arm

Collaborating to complete the UK's largest Power-over-Ethernet installation

Read more ▶