

PRODUCT DATA

ACF Extreme is an IP65 rated linear T5 fluorescent luminaire suitable for outdoor exposed environments and applications. The luminaire body is constructed from extruded and die cast aluminium together with a polycarbonate diffuser to ensure a durable vandal resistant IK08 construction. The diffuser optic provides a wide lighting distribution which is gasketed and retained along its entire length. Tamperproof screws in endcap provide added security. ACF Extreme is primarily designed for surface mounting via pre machined holes in rear of body & is supplied with various grommated cable entry points. Mains connection via fused plug & socket mounted on a removable gear tray assembly.

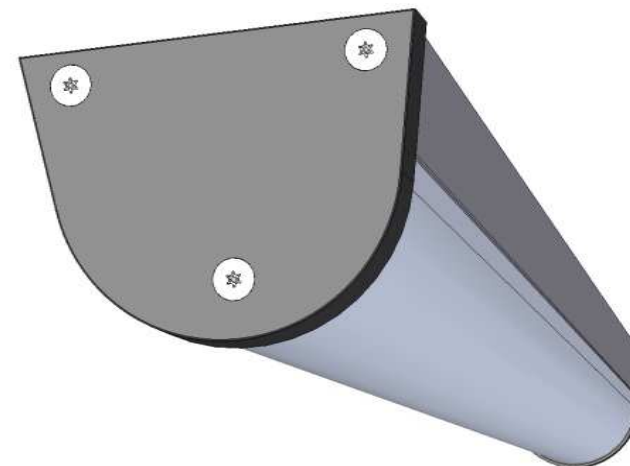
PRODUCT SPECIFICATION

Finish:	Black Polyester Textured Powder Coat
Materials:	Body/Spine Assembly - Extruded aluminium. Endcaps - Die Cast Aluminium. Diffuser Optic - Clear Reeded Polycarbonate.
Control Gear:	High Frequency or Dali as specified.
Emergency:	3 hr integral or COMECS emergency pack as specified.
Lamp Type:	T5 Single or Twin as specified.
Op. Temp:	0 – 25 °C
Weight:	Refer to table.
Dimensions:	Refer to table.
IP Rating:	IP65.
IK Rating:	IK08.
Suspension:	Surface mount via pre drilled holes in rear of spine.
Connection:	Fused terminal block plug & socket via 20 dia cable entry holes in rear of body or end entry via installer drilled hole in fixed endcap.
Tamperproof Screw Type:	Torx TX30

TECHNICAL SUPPORT
Telephone: 0161 331 5700
E-mail: technical@whitecroftlight.com
<http://www.whitecroftlighting.com>



ACF Extreme



IP65 T5 Fluorescent Luminaire Installation Instructions

PK/LEAFACFEXTREME

Nov 2014 - Rev A



Whitecroft Lighting Limited

Burlington Street, Ashton-under-Lyne, Lancashire OL7 0AX
Telephone +44 (0)870 5 087 087 Facsimile: +44 (0)870 5 084 210

Registered No. 3848973 England

Registered Office: As above

GENERAL INFORMATION

1. A qualified electrician, in accordance with IEE wiring regulations should carry out connection to mains wiring.
2. This luminaire must be EARTHED.
3. Ensure that the rated luminaire voltage and frequency requirements are compatible with the available mains supply.
4. If the luminaire incorporates high frequency electronic control gear, do not carry out high voltage insulation test, i.e. 500/1000v this may damage internal components.
5. Cleaning of the diffuser should be carried out using a lint free cloth and soapy water.
6. **NB** It is the responsibility of the installer to ensure that all fixing & cable entry holes are sealed in a satisfactory manner to ensure that IP integrity is maintained.
7. It is recommended that rubber seals around fixing points & polycarbonate diffuser be replaced every 6 years due to potential deterioration & ensure continued IP integrity.

HIGH FREQUENCY BALLAST

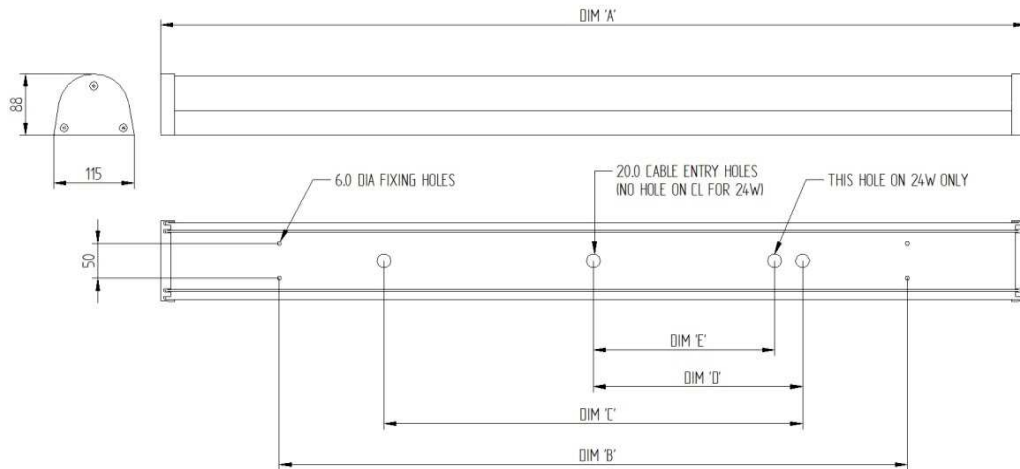
In order to protect High Frequency Ballasts, the unit will automatically go into a stand-by state and prevent operation if any of the following occur.

- (a) The fluorescent lamps are defective, incorrectly fitted or of the wrong type or wattage.
- (b) The mains voltage is too high, low or disrupted.
- (c) The ballast overheats.
- (d) There are poor electrical connections in the circuit.

To reactivate the ballast after the fault is corrected, switch the mains off for a minimum of 10 sec. Do not connect this unit in circuits containing switch start ballasts.

If you have any further queries, please contact **WHITECROFT TECHNICAL SUPPORT**

PRODUCT DIMENSIONS (All dimensions are in 'mm')



DIMENSIONS							
LUMINAIRE TYPE	DIMENSION 'A'	DIMENSION 'B'	DIMENSION 'C'	DIMENSION 'D'	DIMENSION 'E'	WEIGHT STANDARD	WEIGHT EMERGENCY
T5 24W 640mm LONG	640	400	NO HOLE ON CL	180	140	3 KG	N/A
T5 28W / 54W 1240mm LONG	1240	900	600	N/A	N/A	5 KG	6 KG
T5 35W / 49W 1540mm LONG	1540	1200	600	N/A	N/A	7.5 KG	8.5 KG

INSTALLATION INSTRUCTIONS

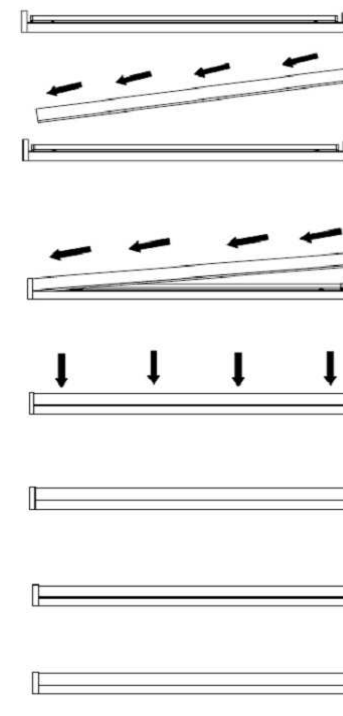
PRE INSTALLATION PREPARATION

1. Remove luminaire from the packaging and inspect the contents for damage.
2. Ensure that the supporting ceiling structure is of adequate strength to support the weight of the luminaires & all tools for installation available.

INSTALLATION

1. Remove endcap from body by removing the 3 tamperproof screws at one end.
2. Remove the diffuser from the body making reference to the diagrams herein.
3. Remove gear tray from body by unscrewing the 2 plastic knurled nuts on gear tray.
4. Unplug the short lead from gear tray & set aside with diffuser & endcap/fixings.
5. Making reference to the product dimensions herein or using the spine as a template mark & drill suitable holes for suspension fixing points & cable entry location.
6. Fix the body to the ceiling using suitable fixings for the weight of the luminaire.
NB Ensure that IP integrity is maintained using suitable rubber washers or sealant.
7. Offer the mains cable through selected cable entry point & connect to the terminal block. Fit an IP rated gland or similar to ensure IP integrity is not compromised.
8. If the luminaire is an emergency variant, connect the battery lead at this point.
9. Connect the plug, re-fit the gear tray & fit the T5 lamps ensuring correct wattage.
10. Re assemble the diffuser & endcap making reference to diagrams below.
11. Apply power & check for correct operation of luminaire & emergency charge LED.

FITTING THE DIFFUSER



REMOVING THE DIFFUSER

To remove the diffuser, twist, turn and pull from one corner at the open end of the body as shown below.

Insert diffuser under fixed endcap & push down into groove

Tap diffuser at end with soft mallet until flush with body

PULL TWIST

Re fit endcap