

PRODUCT DATA

Aerial LED is a high output, high efficiency high bay luminaire for general applications. The luminaire is constructed from extruded aluminium, polycarbonate and acrylic materials. Aerial LED incorporates the latest high efficiency LED light engines and DALI drivers for optimum efficiency and luminaire life.

The luminaire includes an acrylic Hexaprism diffuser optic which gives a glare free appearance from all viewing angles.

Aerial LED can be wire suspended or surface / trunking / drop rod mounted by utilizing one of the optional suspension kits available.

The luminaire is supplied complete with external plug and socket cable terminations for speed and ease of wiring.

Aerial LED is available in two lumen output options of 36,000lm & 50,000lm

PRODUCT SPECIFICATION

Finish:	Body	- White high reflective paint
Materials:	Body Assembly	- Extruded aluminium
	Gear cover	- 0.5mm mild steel
	Suspension Mount Plate	- 0.9mm mild steel
	Diffuser	- 2.5mm Micro Prism Acrylic
	End cap	- Injection moulded white polycarbonate.
Control Gear:	DALI addressable LED Drivers.	
Emergency;	3 hr integral emergency pack	
Controls	COM9	
Lamp Type	4000k high output LED's – 36,000 & 50,000 Lumen outputs	
Op. Temp:	0 - 25 °C	
Power:	Please refer to website for latest Wattage	
IP Rating	LED Chamber / Front Face – IP40	
	Gear Housing / Rear Face – IP20	
Suspension	Wire / Trunking / Surface / Drop Rod	
Weight	Standard = 14.6kg / Emergency = 15.3kg	

TECHNICAL SUPPORT

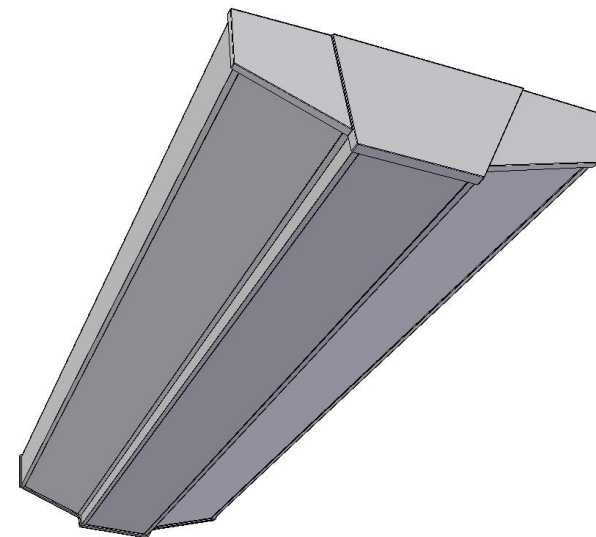
Telephone: 0161 331 5700

E-mail: technical@whitecroftlight.com

<http://www.whitecroftlighting.com>

Whitecroft
lighting

Aerial LED



HIBAY LUMINAIRE INSTALLATION INSTRUCTIONS

PK/AERLEDLEAFLET

MAR 2019 - Rev F



Whitecroft Lighting Limited

Burlington Street, Ashton-under-Lyne, Lancashire OL7 0AX
Telephone +44 (0)870 5 087 087 Facsimile: +44 (0)870 5 084 210

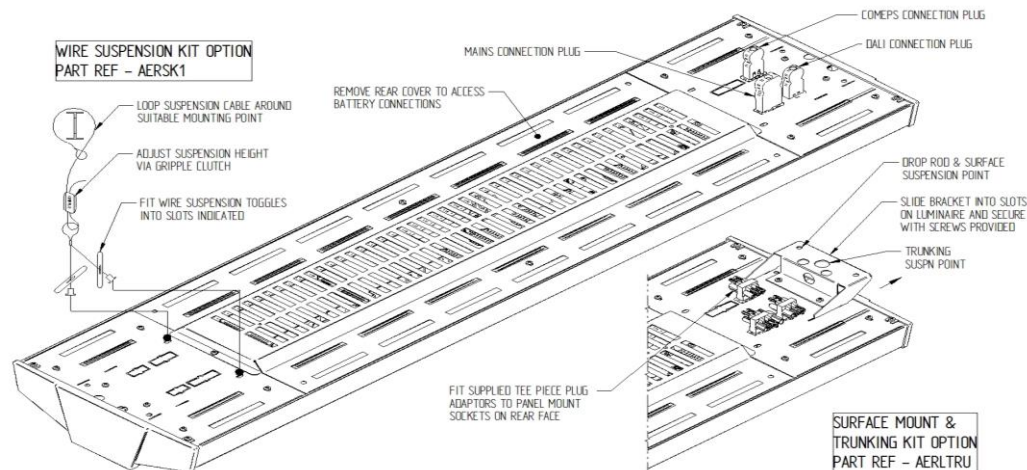
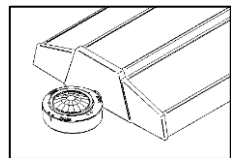
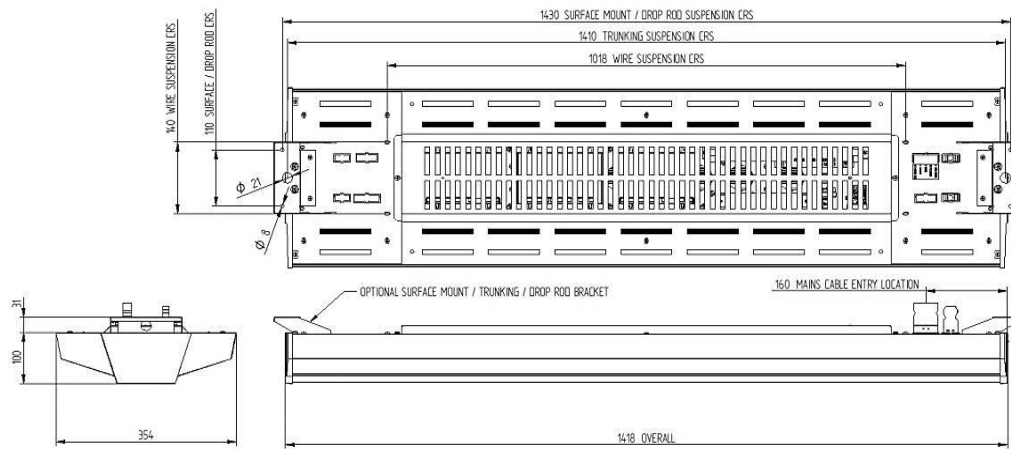
Registered No. 3848973 England

Registered Office: As above

GENERAL INFORMATION

1. A qualified electrician, in accordance with IEE wiring regulations, should carry out connection to mains wiring.
2. This luminaire must be EARTHED.
3. Ensure that the rated luminaire voltage and frequency requirements are compatible with the available mains supply.
4. Cleaning of the lenses should be carried out using clean, soft and lint free cloths and anti-static cleaning fluid.
5. Luminaire body will become hot under normal operating conditions. Allow to cool before undertaking any necessary maintenance work.

PRODUCT DIMENSIONS (All dimensions are in mm)



INSTALLATION INSTRUCTIONS

PRE INSTALLATION

1. Remove the luminaire from packaging and inspect the contents for damage.
2. Ensure that the supporting ceiling structure is of adequate strength to support the weight of the luminaire (see table for weights).

WIRE SUSPENSION KIT OPTION (supplied separate)

1. Loop the suspension cable around a suitable load bearing structure at the approximate centres indicated. Fit the gripper clutch & suspension toggle 'Y' splitter to the cable and adjust to the desired height making reference to the separate suspension kit instructions.
2. Support the weight of the luminaire from below and then offer the 'Y' splitter toggles through the slots indicated on the back of the luminaire at each end.
3. Check luminaire height and level if necessary via the adjustable clutch mechanisms (NB support the luminaire weight when adjusting). Trim off any excess cable only once happy with the luminaire height.

TRUNKING /SURFACE MOUNT KIT OPTION -1600lm/ 24000lm only (supplied separate)

1. Slide the support brackets into the four slots at each end of the luminaire and secure in place via the two self tapping screws provided.
2. Fit the supplied tee piece plug adaptors to the sockets to enable side entry of the connection plugs.
3. If suspending from trunking use a suitable 20mm adaptor (not supplied).
4. If suspending via drop rods, use 8mm rod at centres indicated.(not supplied)
5. If surface mounted use suitable fixings at centres indicated.(not supplied)

NB – If the luminaire is being suspended via customer preferred method, e.g drop rods or chains, then a surface mount kit must be utilized to facilitate fit (ordered separately).

GENERAL WIRING INFORMATION

1. Wire the plugs in accordance with the schematic detailed below noting location of Dali and COMECS sockets. Connect plugs into relevant sockets in the rear of the luminaire and test for correct operation.
2. If the luminaire is an emergency variant, connect the battery leads and mark the installation date. Access to batteries can be gained from the rear of the luminaire by removing the gear cover (4 screws). NB Battery connection must be undertaken before installation of luminaire if surface or trunking mounted.
3. If fixed output operation is required, installer must fit link cable within Dali plug 'N' & 'L' terminals as detailed below. (Nb Link not required for Dali operation)
4. Nb - For COM9 variants Dali connection plug is not required

Warning: The LEDs in this luminaire operate at HIGH VOLTAGE
Ensure that the luminaire is isolated before opening.

