

PRODUCT DATA

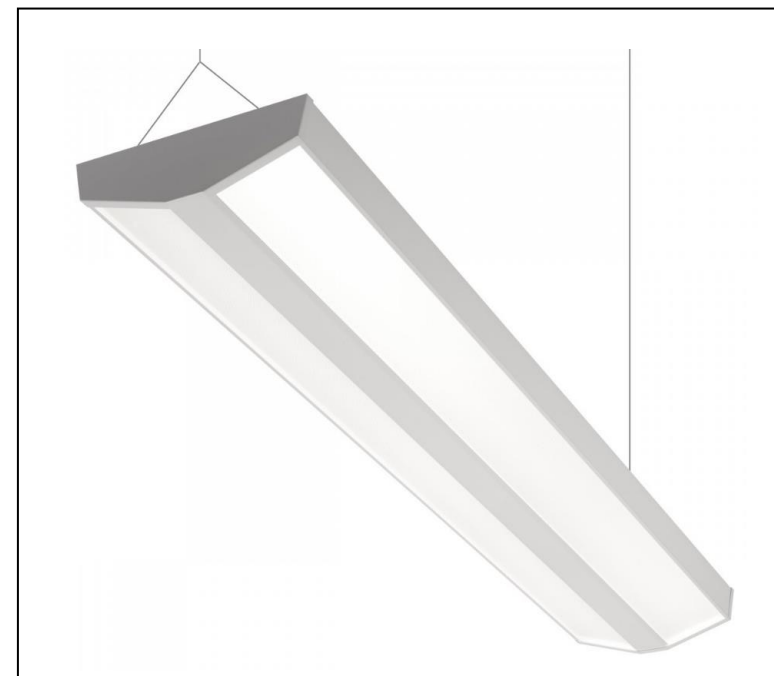
Aerial Industry/Sport is a high output, high efficiency high bay luminaire for general applications. The luminaire is constructed from sheet metal, polycarbonate and acrylic materials. Aerial Industry/Sport incorporates the latest high efficiency LED light engines and drivers for optimum efficiency and luminaire life. The luminaire range includes a Quadraprism (medium beam), Opal diffuser (wide beam), and High Rack optic to suit most applications. Polycarbonate option for sports application. Aerial Industry/Sport can be wire suspended or surface / trunking / drop rod mounted by utilizing one of the optional suspension kits available. The luminaire is supplied complete with external plug and socket cable terminations for speed and ease of wiring.

PRODUCT SPECIFICATION

Finish:	Body	- White high reflective paint
Materials:	Body Assembly	- Sheet Metal
	Rear Backplate	- 0.9mm mild steel
	Diffuser Options	- 2.5mm Quad Prism Acrylic (medium beam)
		- 2mm Opal Satine Acrylic (wide beam)
	- 3mm Polycarbonate (sport)	
	- 15 degree lens with clear diffuser (high rack)	
	End cap	- Injection moulded white Polycarbonate.
Control Gear:	DALI addressable or Fixed output LED Drivers.	
Emergency:	3 hr integral emergency pack (Refer to website for options)	
Light Source:	4000k high output LED's	
Op. Temp:	-20 to +25 °C (Medium and wide beam)	
	-20 to +35 °C (High rack and sport)	
	Minimum 0 °C for all emergency options.	
Power:	Please refer to website for latest Wattage	
IP Rating:	IP40 front & rear	
IK Rating:	IK09 for Aerial Sport	
Connection:	Plug & Socket - 2.5mm ² maximum cable	
Suspension:	Wire / Trunking / Surface / Drop Rod	

Whitecroft
lighting

Aerial Industry Aerial Sport



HIGH BAY LUMINAIRE INSTALLATION INSTRUCTIONS

PK/LEAFAERIND

November 2019 - Rev G

TECHNICAL SUPPORT
Telephone: 0161 331 5700
E-mail: technical@whitecroflight.com
<http://www.whitecroflighting.com>



Whitecroft Lighting Limited

Burlington Street, Ashton-under-Lyne, Lancashire OL7 0AX
Telephone +44 (0)161 330 6811 Facsimile: +44 (0)161 331 5855

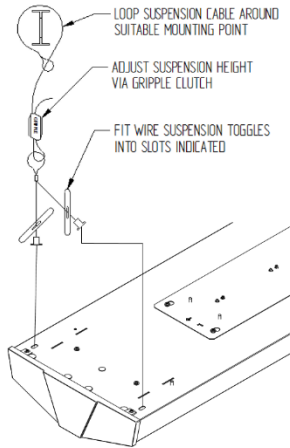
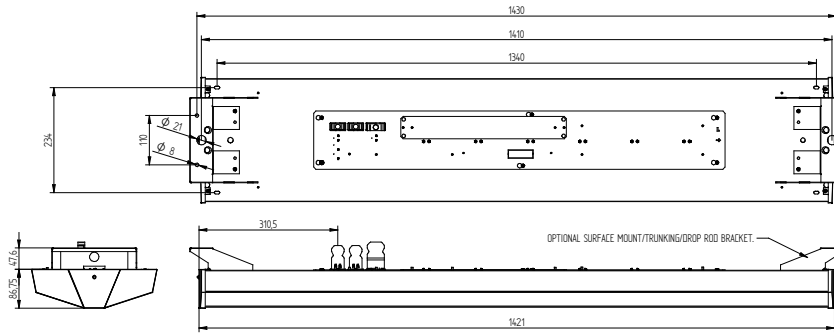
Registered No. 3848973 England

Registered Office: AS above

GENERAL INFORMATION

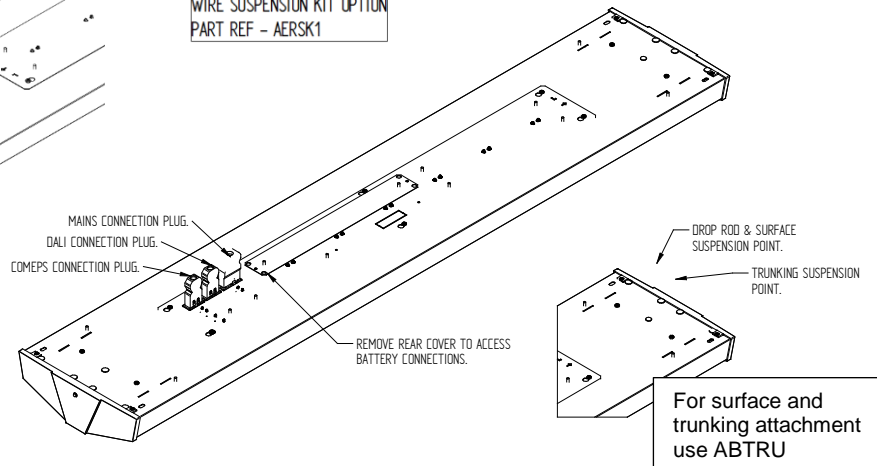
1. A qualified electrician, in accordance with IEE wiring regulations, should carry out connection to mains wiring.
2. This luminaire must be EARTHED.
3. Ensure that the rated luminaire voltage and frequency requirements are compatible with the available mains supply.
4. Cleaning of lenses should be carried out using a lint free cloth and anti-static cleaning fluid.
5. The luminaire body will become hot under normal operating conditions. Allow to cool before undertaking any necessary maintenance work.

PRODUCT DIMENSIONS (All dimensions are in 'mm'.)



Weight Standard 9.8kg
Weight Emergency 10.8kg

WIRE SUSPENSION KIT OPTION
PART REF - AERSK1



INSTALLATION INSTRUCTIONS

PRE INSTALLATION

1. Remove the luminaire from packaging and inspect the contents for damage.
2. Ensure that the supporting ceiling structure is of adequate strength to support the weight of the luminaire. (see table for weights)

WIRE SUSPENSION KIT OPTION - 5m (supplied separate)

1. Loop the suspension cable around a suitable load bearing structure at the approximate centres indicated. Fit the gripple clutch & suspension toggle 'Y'splitter to the cable and adjust to the desired height making reference to the separate suspension kit instructions.
2. Support the weight of the luminaire from below and then offer the 'Y' splitter toggles through the slots indicated on the back of the luminaire at each end.
3. Check luminaire height and level if necessary via the adjustable clutch mechanisms (Nb support the luminaire weight when adjusting). Trim off any excess cable only when happy with the luminaire suspension height.

TRUNKING /SURFACE MOUNT KIT OPTION - (supplied separate)

1. Slide the support brackets into the four slots at each end of the luminaire and secure in place via the two self tapping screws provided.
2. Fit the supplied tee piece plug adaptors to the sockets to enable side entry of the connection plugs.
3. If suspending from trunking use a suitable 20mm adaptor (not supplied).
4. If suspending via drop rods, use 8mm rod at centres indicated.(not supplied)
5. If surface mounted use suitable fixings at centres indicated.(not supplied)

NB – If the luminaire is being suspended via customer preferred method, eg drop rods or chains, then a surface mount kit (ABTRU) must be utilized to facilitate fit. (ordered separate).

GENERAL WIRING INFORMATION

1. Wire the plugs in accordance with the schematic detailed below noting location of Dali and COMEPS sockets. Connect plugs into relevant sockets in the rear of the luminaire and test for correct operation.
2. If the luminaire is an emergency variant, connect the battery leads and mark the installation date. Access to batteries can be gained from the rear of the luminaire by removing the gear cover (4 screws). NB Battery connection must be undertaken before installation of luminaire if surface or trunking mounted.
3. If fixed output operation is required, installer must fit link cable within Dali plug 'N' & 'L' terminals as detailed below.(Nb Link not required for Dali operation)

Warning: The LEDs in this luminaire operate at HIGH VOLTAGE. Ensure that the luminaire is isolated before opening.

