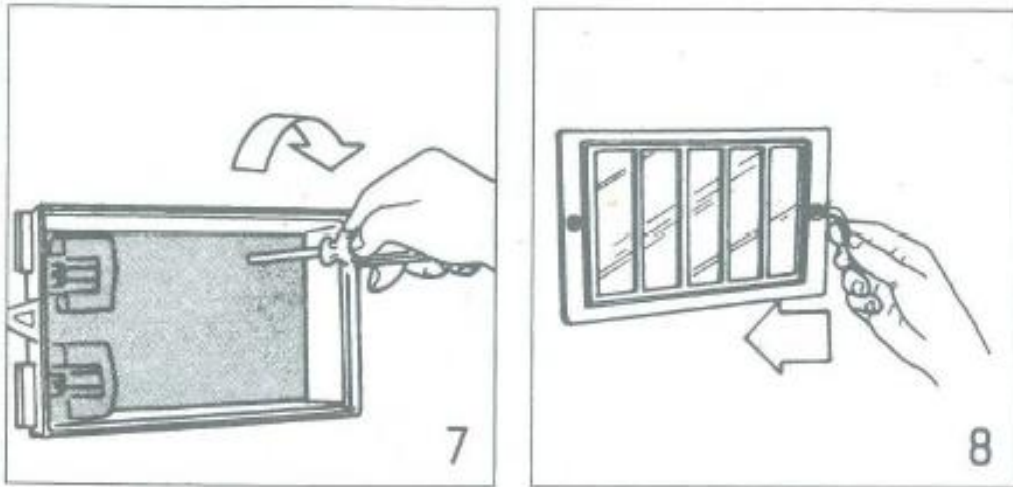


GENERAL INFORMATION

- 1) A qualified electrician, in accordance with IEE wiring regulations, should carry out connection to mains wiring.
- 2) Ensure that the rated voltage and frequency requirements are compatible with the available mains supply.
- 3) Cleaning of reflectors and lenses should be carried out using clean, soft and lint free cloths and anti-static cleaning fluid
- 4) Do not carry out high voltage insulation test, i.e. 500/1000v this may damage internal components.
- 5) We recommend use of a high temperature Copper Paste on all screws that need to be accessed during maintenance process, this will prolong the life of the fixings and reduce the force required to remove the screws.
- 6) Some luminaires installed in outdoor environments may experience a build-up of internal condensation. This is due to a difference in temperature between inside and outside the luminaire which is quite common and acceptable under BSEN60598.

GENERAL MAINTENANCE

To access the inside of the luminaire you will need to remove the 2 Screws using a size 4 Allen key. Then unscrew the reflector so that it comes loose then you can perform any maintenance needed. Then reverse the process to put cover back. Check gasket before closing lid.



Please note: All images shown are for illustration purposes and should be used as a reference guide only.

TECHNICAL SUPPORT

Tel: 0161 331 5700

E-mail: technical@whitecroftlight.com

www.whitecroftlighting.com



Broadwalk Quad Installation Leaflet



PK/LEAF/BROADQ

June 2014 - Rev B



Whitecroft Lighting Limited

Burlington Street, Ashton-under-Lyne, Lancashire OL7 0AX
Telephone +44 (0)870 5 087 087 Facsimile: +44 (0)870 5 084 210

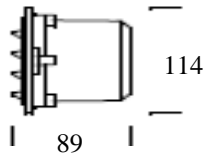
Registered No. 3848973 England

Registered Office: As above

Specification

The Broadwalk Quad is a small cut aperture recessed fitting that give 650 lumens. With a power consumption of 4.5 Watts.

Height mm	Width mm	Depth mm	Weight Kg
114mm	223mm	89mm	0.6Kg



Each Broadwalk Quad is shipped in one single package:

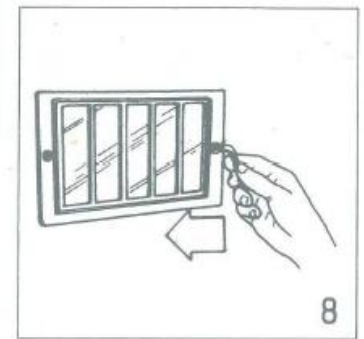
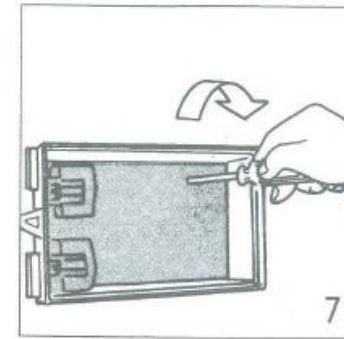
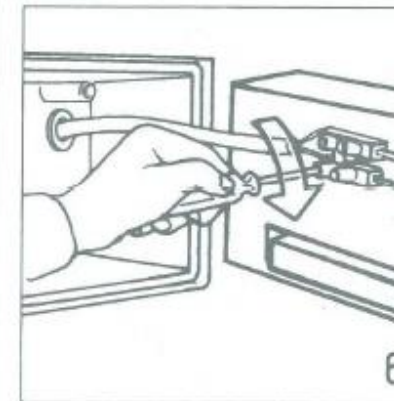
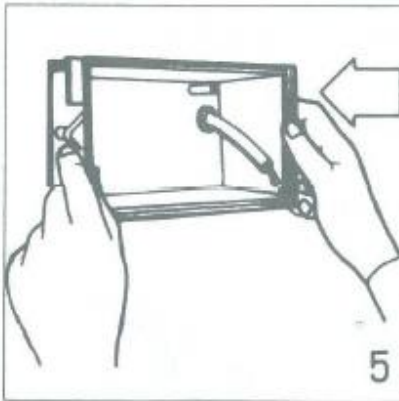
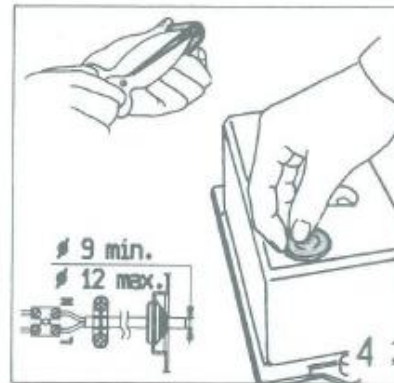
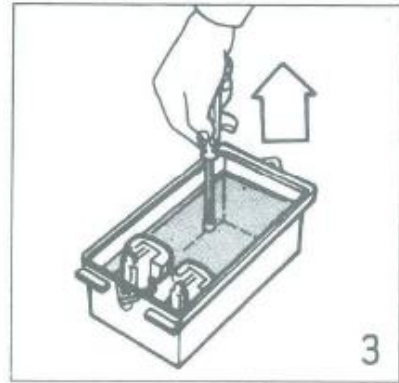
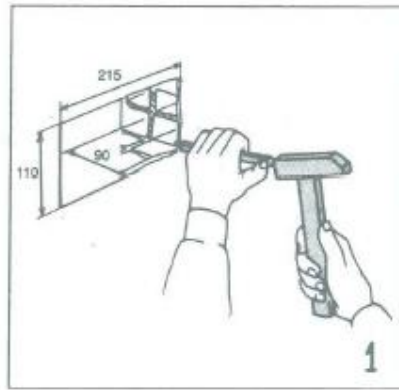
Before commencing installation, check content of carton to ensure that all components are present and in good condition.

1. Facial comes with IP 65 Grommet

INSTALLATION SEQUENCE

In order to fit this luminaire, the correct sequence of assembly must be observed.

1. Remove the fitting from its packaging.
2. Cut out an aperture 215mm Wide, 110mm high and then greater than 90mm deep, (fig. 1).
3. Unscrew the front of the fitting using a size 4 Allen Key. (Fig. 2).
4. Unscrew the 4 screws so that the reflector comes away from the body. (Fig. 3)
5. Make sure you have ample cable to wire in the fitting. (Diameter = 9-12mm) and push through the grommet.
6. Take the grommet and cut the hole to suit the cable size that you have. (Fig. 4).



7. Pull the Wire through the grommet so that you have ample to safely wire the product without cable strain.
8. Cement your back box into the wall so that it is safe and secure, (Fig. 5).
8. Wire the cable into the Terminal block located on back of reflector, (Fig. 6).
9. Screw the reflector back to its original position making sure there is no Damage, (Fig. 7).
10. Then screw the front diffuser to the product with a size 4 Allen key. Make sure there is no damage to the outside of product, (Fig. 8).