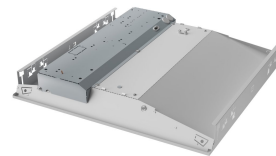


# Cascade Comfort



Cascade Comfort - Recessed modular luminaire with strong visual differentiation using a central linear optic. A wide diffuser to reduce visual discomfort from direct viewing angles, achieving UGR19 in a large open plan space.



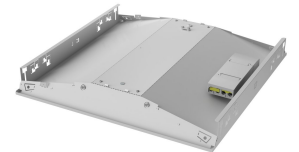
Cascade Comfort XT with emergency back



Cascade exploded view



Cascade Comfort



Cascade Comfort XT back

## Overview

Cascade Comfort provides excellent glare control, making it an ideal choice for SEN classrooms and healthcare environments without compromising aesthetics or sustainability. Its wipe-clean surface enhances infection control, positioning Cascade Comfort as the perfect solution for healthcare settings. With Ra90 precision colour rendering and a 3000K warmer light option, it also supports comfortable and inviting social spaces.

Aligned with our broader business offering, the Cascade Comfort emergency option is equipped with advanced LiFePO4 battery technology. Additionally, the option for an integrated Organic Response sensor node maximizes energy efficiency and optimizes the product's whole-life performance.

\* Orders will be accepted starting in late April 2025.

## Lighting Performance

### Optics:

- Wide Diffuser Optic to support delivery of UGR and maximum visual comfort
- Ideal for SEN classrooms and consulting rooms
- Tp(A) rated

### Outputs

- 2300 lumens, 17.5W (131lm/w)
- 3300 lumens, 25.2W (131lm/w)
- 4100 lumens, 31.5W (130lm/w)

#### Light Source:

- Ra80 or Ra90
- 3000K or 4000K
- MacAdam 3 SDCM
- L90B50 @ >50,000 hours (other lifetime data available on request)

#### Control Gear

- Fixed Output
- DALI2 driver

#### Lighting Controls:

- Available with integrated Organic Response smart sensor node

#### Emergency Lighting:

- Integrated 3 hour LiFeP04. 3hr Keyswitch (EM), auto-test (EP) and wireless auto-test (EW) available
- LiFeP04 offers several benefits versus NiCAD battery technology:
  - Improved Warranty (5 years)
  - Reduced energy in operation (up to 45%)
  - Longer Life (6-8 years)
  - Increased switching cycles
  - Lower embodied carbon
- Emergency Output:
  - **275 lumens**

For specific product variant information, including lifetime, efficacy, power, output and electrical data, please click on the individual part number under 'Order Codes' and view the datasheet

---

## Construction

#### Main Body:

- Steel canopy finished in white RAL 9003

#### Construction Methodology:

- Standard tool access to replaceable central cartridge with optics and light engine
- No screws or glues used within construction
- Up to 67% less plastic than a standard LED 600x600 flat panel solution

#### Ceiling Integration Options:

- 600 x 600mm Exposed Tee (584 x 584mm - Ref 'XT')
- 600 x 600mm Spring Tee (599 x 599mm - Ref 'ST')
- 600 x 600mm Plasterboard (use 'XT' version with 'SFTPBF' frame accessory)

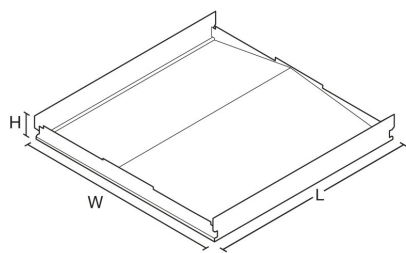
#### Accessories:

- Can be used with MSU Kit for Mental Health - Medium Secure Unit & Anti-Ligature applications
  - Plasterboard (use 'XT' version with 'SFTPBF' frame accessory)
-

# LED Performance

Colour Temp	RA (CRI)	Life expectancy
4000K	CRI80	>L90B50@58,000 Hours
3000K	CRI80	>L90B50@58,000 Hours

# Dimensions



VERSION	L	W	H	KG	KG(EM)
Cascade Comfort	584	584	69	5	5.5

# To Specify

Recessed modular luminaire with strong visual differentiation using a central linear optic. The light engine utilises LED flip chip technology and a cartridge that is easily replaced without tools for simple future upgrades and replacement ensuring a sustainable lighting solution. Recessed modular luminaire with strong visual differentiation using a central linear optic. A wide diffuser to reduce visual discomfort from direct viewing angles, achieving UGR19 in a large open plan space: CASCADE COMFORT