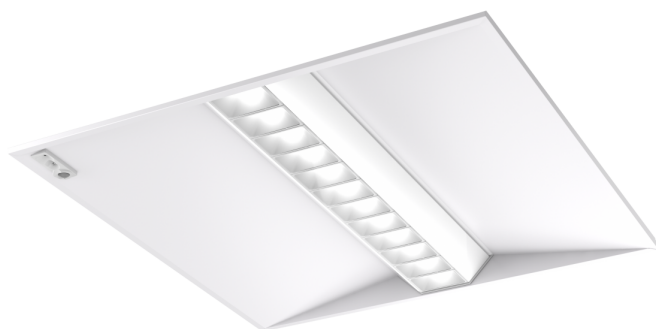


Cascade Flex Vitality



Sustainable feature recessed luminaire offering differentiation for office and associated environments. Whitecroft Vitality circular economy solution with independent accreditation.



Removable Pod Cartridge



600 Pod recessed



1200x300 Pod, OR3



600x600 Pod

Overview

Designed with a circular approach the Cascade Flex Vitality is a new generation of recessed luminaire. Careful consideration has been given to the materials used and the effect they have on people and the environment. The luminaire features a replaceable central cartridge which can be returned, refurbished and reused multiple times ensuring that the materials remain in use without a sacrifice to the luminaires performance, before eventually being recycled at the end of its life.

The distinctive central optics and range of lumen outputs deliver both visual comfort and efficacy. The pod optic is the preferred option for areas where a higher level of glare control is required. It directs 80% of the output onto the task while the remaining 20% serves to illuminate the bevelled ceiling canopy. This results in an intermediate brightness zone which creates a contrasting field between the optic and the ceiling plane, adding visual interest and overall comfort.

Cascade Flex Vitality is Cradle to Cradle Certified® Bronze which ensures products are made with careful consideration of the materials used in construction, their effect on people and the environment and how they can be re-used and later recycled at the end of life.

Optics

- Outputs ranging from nominal 3300 to 4100 lumens
- 4000K and 3000K colour temperature options
- Ra 80 and Ra90 colour rendition options
- MacAdam 3 SDCM
- L90 at 50,000 hours
- Pod optics:
 - Pod: 600 x 600mm - 3300 & 4100 lumens
 - Pod: 1200 x 300mm - 3300 & 4100 lumens
- Tp(a) rated

For specific product variant information, including lifetime, efficacy, power, output and electrical data, please click on the individual part number under 'Order Codes' and view the datasheet

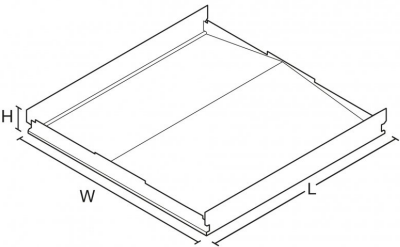
Lifetime Data			
Version	L70B50	L80B50	L90B50
Pod 3300lm	>100k	>100k	52k
Pod 4100lm	>100k	>100k	50k

Emergency Outputs		
Version	CCT/CRI	Emergency lumens
600 Pod	4000K, Ra80	375
600 Pod	3000K, Ra80	360
600 Pod	4000K, Ra90	330
600 Pod	3000K, Ra90	310
1200 Pod	4000K, Ra80	390
1200 Pod	3000K, Ra80	385
1200 Pod	4000K, Ra90	350
1200 Pod	3000K, Ra90	325

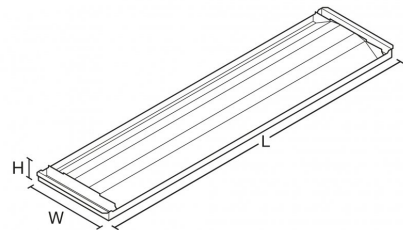
Body

- Steel canopy finished in white RAL 9003
- Suitable for a range of ceilings:
 - 600 x 600mm Exposed Tee (584 x 584mm - Ref 'XT')
 - 600 x 600mm Spring Tee (599 x 599mm - Ref 'ST')
 - 600 x 600mm Plasterboard (use 'XT' version with 'SFTPBF' frame accessory)
 - 1200 x 300mm (1194 x 297mm - SAS 330)
- Replaceable central cartridge with optics and light engine
- Emergency 3 hour self-contained and DALI test options with LiFePO4 Lithium batteries
- Lithium batteries offer long life with excellent stability and performance and can be recycled at the end of life
- DALI 2 standard drivers
- Integral Organic Response sensor option
- Air Control option (requires remote detector)
- Can be used with MSU Kit for Mental Health - Medium Secure Unit & Anti-Ligature applications
- Note: All DALI variants require 1 DALI address per driver. COMEPS variants will require an additional DALI address.

Dimensions

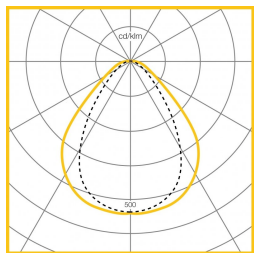


VERSION	L	W	H	KG	KG(EM)
Exposed Tee	584	584	69	4.0	5.5
Spring Tee	599	599	83	4.0	5.5



VERSION	L	W	H	KG	KG(EM)
SAS 330	1194	297	68	5.5	7.5

Photometric Performance



4100 lumen, 30W
Pod
LOR = 100%
SHR MAX = 1.53

To Specify

Recessed modular luminaire with strong visual differentiation using a central linear optic. The light engine cartridge is easily replaced without tools for simple future upgrades and replacement ensuring a sustainable, circular economy lighting solution with independent Cradle to Cradle Certified® accreditation - as Whitecroft Lighting CASCADE FLEX VITALITY
