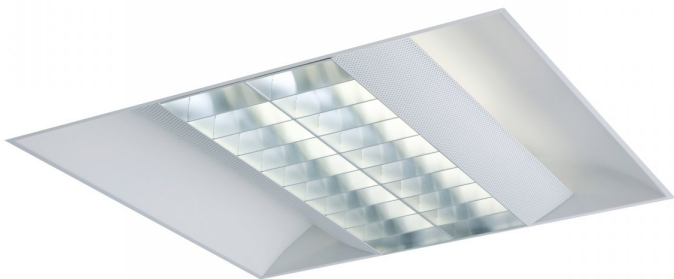


# Cascade Flu

Direct/indirect recessed luminaire



## Optics

- MIRO 5 zero iridescent semi-specular louvre mounted between perforated gull wings.
- Twin cell louvre:
  - 4 x 14W T5
  - 2 X 40/55W TC-L

## Body

- Designed to rest above 15 and 25mm exposed T ceilings. Installation in plasterboard ceilings possible using optional frame
- Fully flanged rolled body with end plates tightly jointed for a rigid construction, finished white
- RAL Colour: White RAL9003.
- Air handling option on louvre version, 30L/sec

## Order codes

### Twin Cell Louvre

Twin Cell Louvre	HF Gear	3hr Emergency	LL/CW
T5 4 x 14W	CSDWH414	CSDWH414EMIN	62
TC-L 2 x 40W	CSDWH240	CSDWH240EMIN	57
TC-L 2 x 55W	CSDWH255	CSDWH255EMIN	57

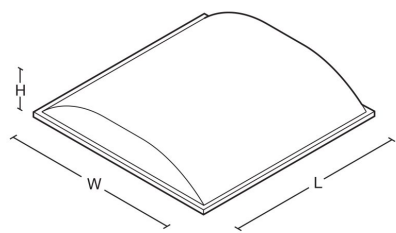
Accessories

Plasterboard Installation Frame	CSDPBF
---------------------------------	--------

Options

AIR HANDLING	Add suffix AH	i.e CSDWH414AH
COMEPS	Add suffix /EP	i.e CSDWH414/EP
DALI DIMMING	Replace H with Y	i.e CSDWY414
SWITCH DIM	Replace H with X	i.e CSDWX414
COMMAND 3	Replace H with Q3Y	i.e. CSDWQ4Y414
COMMAND 4	Replace H with Q4Y	i.e. CSDWQ3Y414

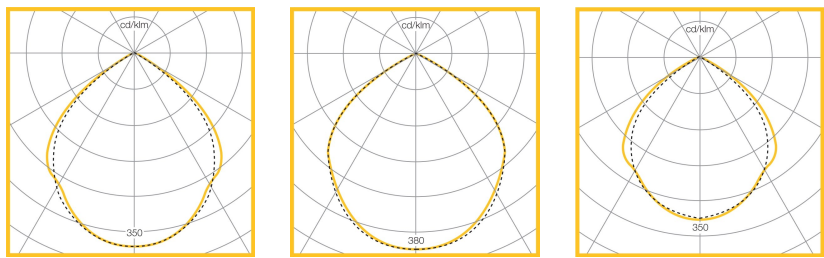
Dimensions



VERSION	L	W	H	KG	KG(EM)	Prepared Aperture
Exposed T	593	595	95	4.5	5.5	
Plasterboard frame	660	660	95	6.5	7.5	625 x 625 -3 +3

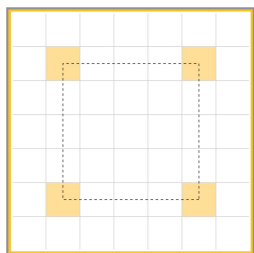
--

# Photometric Performance



4 x 14W T5 LOR = 72.6% SHR MAX = 1.58	2 x 55W TC-L LOR = 68.8% SHR MAX = 1.55	2 x 24W T5 LOR = 77.7% SHR MAX = 1.57
---	---	---

## Performance Guide



Lamps	4 x 14W T5
Illuminance	510 lux
Spacing	2.4m x 2.4m
Maintenance	0.8
Reflectance	70/50/20
Ceiling Height	2.7m
Working plane	0.8m

## To Specify

Direct/indirect recessed T5 or TCL luminaire. Twin cell MIRO 5 louvre with perforated wings mounted in a steel body painted white - as Whitecroft Lighting CASCADE

## Application images

