

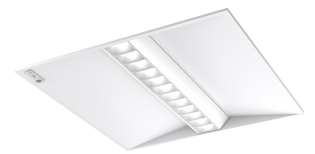
# Cascade



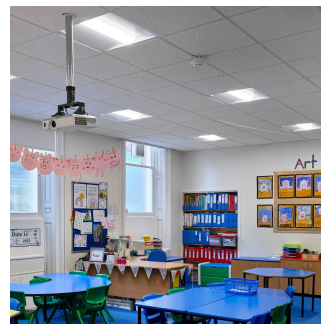
Cascade - Recessed modular luminaire with strong visual differentiation using a central linear optic. Pod optic to enable effective glare control or diffuser optic for general area lighting. The light engine cartridge is easily replaced for simple future upgrades and replacement ensuring a sustainable lighting solution.



Cascade Diffuser



Cascade Pod with Organic Response



Cascade diffuser



Cascade Pod Dropped Diffuser

## Overview

Cascade - In a world demanding innovative low impact solution Cascade delivers an effective and efficient alternative to a full diffuser flat panel for low glare spaces. Building on circular design principles of modular design and effective use of materials, Cascade will support the delivery of low impact buildings today and into the future.

## Lighting Performance

### Optics:

- Pod Optic to support delivery of UGR. All Outputs <3,000cd/m<sup>2</sup> to support compliance to EN12464-1 & LG7 requirements for VDT use
- Diffuser Optic for open area spaces.
- Tp(A) rated

### Outputs:

- Pod:

- 2300 lumens, 17.7W (130lm/w)
- 3300 lumens, 25.4W (130lm/w)
- 4100 lumens, 31.9W (129lm/w)
- Diffuser:
  - 2305 lumens, 18.3W (126lm/w)
  - 3302 lumens, 26.2W (126lm/w)
  - 4103 lumens, 33.1W (124lm/w)
  - 5105 lumens, 42.4W (102lm/w)

#### Light Source:

- 4000K
- >Ra 80
- MacAdam 3 SDCM
- L90B50@>50,000 hours (other lifetime data available on request)

#### Control Gear

- Fixed Output and DALI 2 control gear available.
- Note: All DALI variants require 1 DALI address per driver. COMECS variants will require an additional DALI address.

#### Lighting Controls:

- Available with integrated Organic Response smart sensor node.

#### Emergency Lighting:

- Integrated 3 hour LiFeP04. 3hr Keyswitch (EM), auto-test (EP) and wireless auto-test (EW) available.
- LiFeP04 offers several benefits versus NiCAD battery technology:
  - Improved Warranty (5 years)
  - Reduced energy in operation (up to 45%)
  - Longer Life (6-8 years)
  - Increased switching cycles
  - Lower embodied carbon
- Emergency Output:
  - Pod - 255 lumens
  - Diffuser - 275 lumens

For specific product variant information, including lifetime, efficacy, power, output and electrical data, please click on the individual part number under 'Order Codes' and view the datasheet

## Construction

- Steel canopy finished in white RAL 9003
- Suitable for 600 x 600mm Exposed Tee (584 x 584mm)
- Replaceable central cartridge with optics and light engine

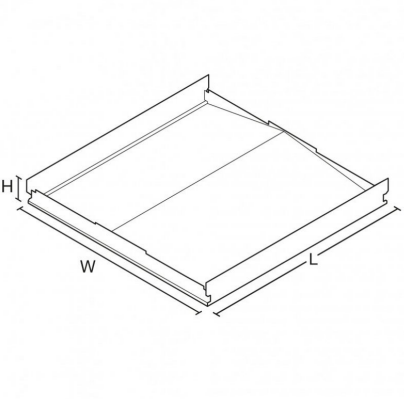
#### Accessories:

- Can be used with MSU Kit for Mental Health - Medium Secure Unit & Anti-Ligature applications
- Plasterboard (use 'XT' version with 'SFTPBF' frame accessory)

## LED Performance

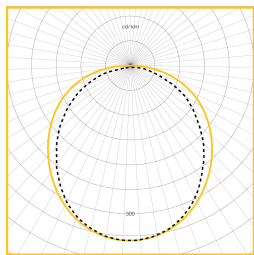
Colour Temp	RA (CRI)	Life expectancy	Colour consistency
4000K	>Ra80	L90@47,000 hours	MacAdam 3 SDCM

# Dimensions

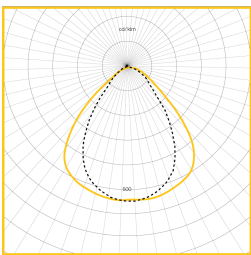


VERSION	L	W	H	KG	KG(EM)
Cascade	584	584	69	3.5	5.0

## Photometric Performance



Cascade diffuser  
LOR = 100%  
SHR MAX = 1.58



Cascade POD  
LOR = 100%  
SHR MAX = 1.57

## To Specify

Recessed modular luminaire with strong visual differentiation using a central linear optic. Diffuser optic for area lighting solutions. The light engine cartridge is easily replaced without tools for simple future upgrades and replacement ensuring a sustainable lighting solution. AS WHITECROFT CASCADE