

Product Data Sheet

Low Profile Microwave Detector

digidim

313




The 313 Low Profile Microwave Detector provides occupancy detection for the automatic control of DALI lighting loads. The unit can also be controlled using the 307 IR (infra-red) remote control handset.


The 313 detects movement using its highly sensitive microwave detector. It works by emitting low-power microwave signals and measuring the reflections as the signals bounce off moving objects.

When an area is no longer occupied, the load will switch off after a certain time. This time-out period is configured using Helvar's lighting system design and control software; Designer, or DIGIDIM Toolbox.

Key Features

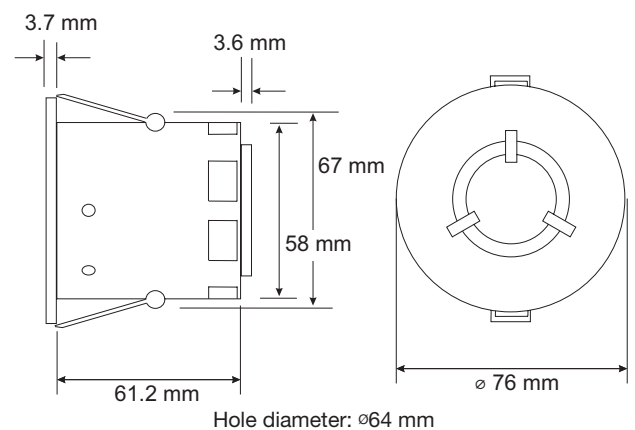
- Microwave sensor detects movement within the detection range allowing load control in response to changes in room occupancy.
- IR Receiver receives control and programming commands from a 307 IR (infrared) handset (available separately).
- Status LEDs flash red to indicate the following:

Walk Test LED active	 when movement is detected
Valid setting received	
Identify Active	

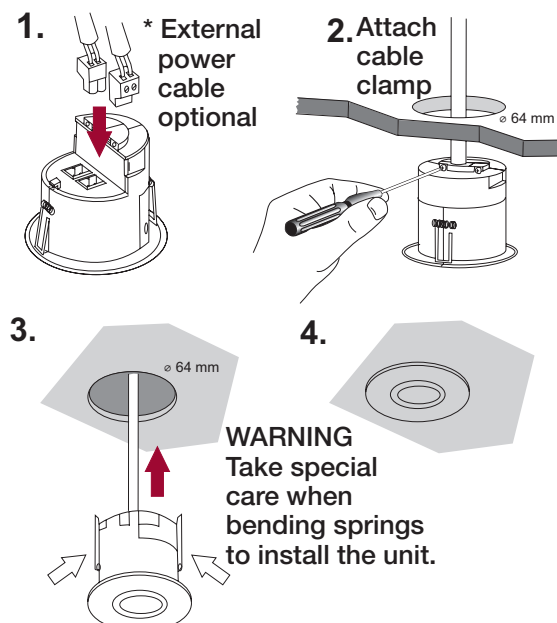
 = Red LED



Dimensions



Installation



Installation Notes

- Position the sensor so that the occupants of the room are normally inside the detection zone.
- Do not install the sensor within 1 m of any lighting, forced air heating, or ventilation equipment.
- Do not fix the sensor to an unstable or vibrating surface.
- Install the unit as far away as possible from the surface of metal objects.
- The detection pattern illustrated is based on a mounting height of 2.8 m.
- A lower mounting height will decrease the overall size of the detection zone.

Helvar
www.helvar.com

Product Data Sheet

Low Profile Microwave Detector

digidim

313

Connections

External power / DALI: Removable 2-pole connectors
Wire size: 0.5 mm² - 2.5 mm²
Solid or stranded

Power cable rating: All cables must be mains rated

Power

DALI Supply Input: 13 V to 22.5 V
DALI Consumption*: 20 mA
External Power: 12 V to 24 V, 0.5 W
(Optional)

* NOTE: DALI consumption is less than 2 mA when external power is supplied to the unit.

Microwave Operating Frequency

Frequency: 5.8 GHz

Mechanical Data

Dimensions: See diagrams
Material (casing): Non-flammable ABS
Finish / Colour: Matt / White
Weight: 90 g
IP rating: IP30

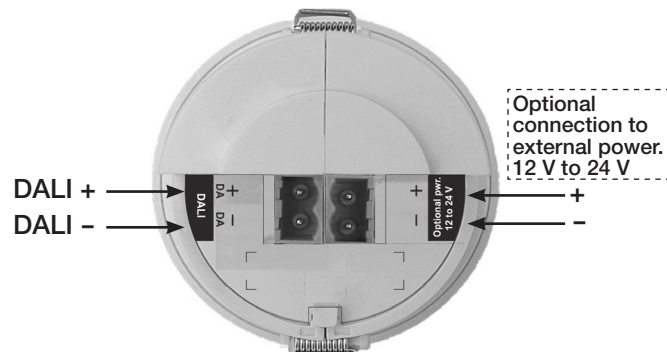
Operating Conditions

Ambient Temperature: 0°C to 35°C
Storage Temperature: -10°C to 70°C
Relative Humidity: Max 95%, non-condensing

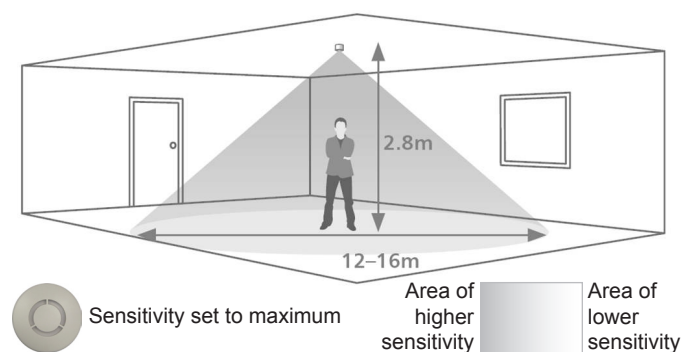
Conformity and Standards

EMC: 2004/108/EEC
LVD: 2006/95/EEC
Environment: Complies with WEEE and RoHS directives

Connections



Detection Pattern



Helvar
www.helvar.com