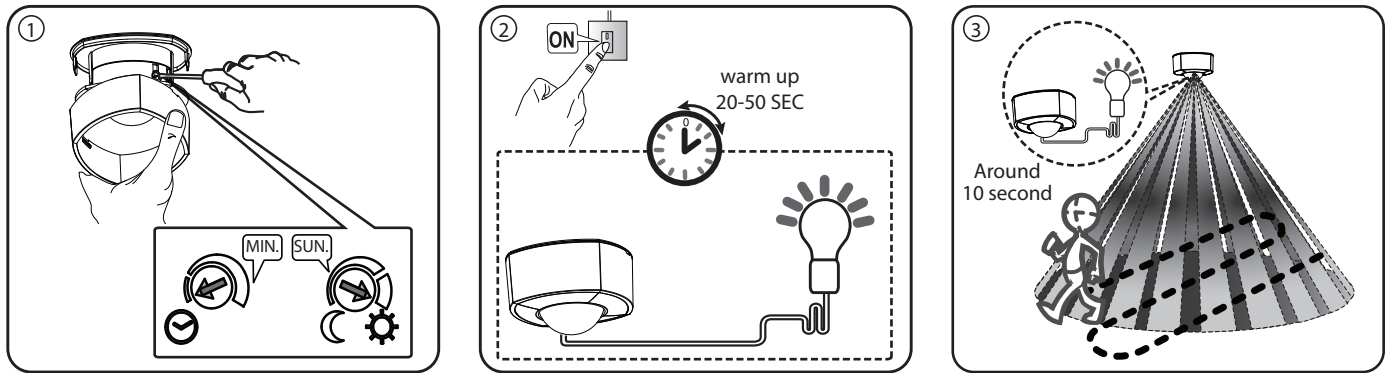
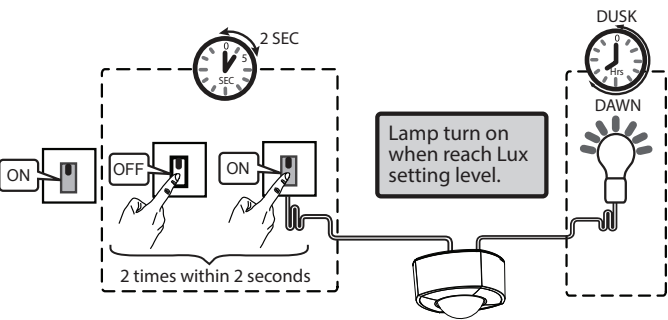


WALK TESTING

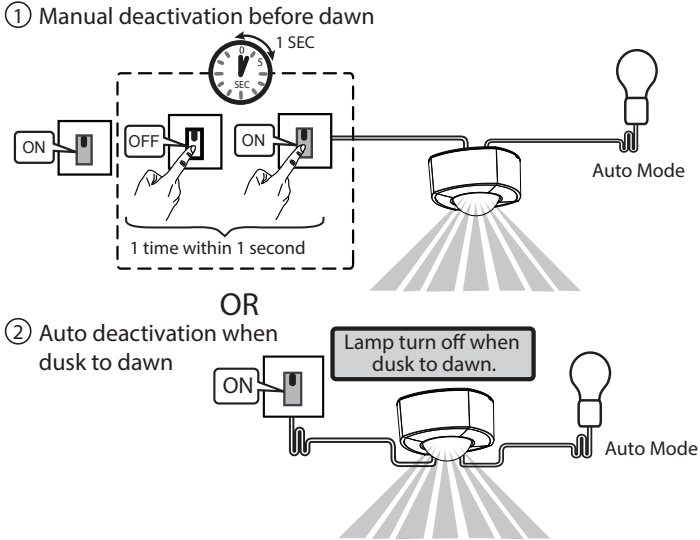


MANUAL OVERRIDE OPERATION

Activate Manual Override Operation



Deactivate Manual Override Operation



SWITCHABLE LOAD

	Max 1440W		Max 120W
	Max 500W		Max 110W
	Max 400W		Max 75W

TECHNICAL SPECIFICATIONS

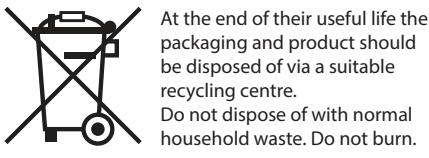
Detection Range: Up to 6 metres diameter (3m Radius) at mounting height of 2.5m
Detection Angle: 360°
Power Supply: 220 ~ 240 VAC / 50 Hz
Maximum Switchable Load: Max load current 6A
Incandescent / Halogen Max 1440W
Flourescent lamp (magnetic) Max 500W
Flourescent lamp (electronic ballast) Max 400W
Low energy (CFL) Max 120W
LED lamp Max 110W
Fan Max 75W
Time On Adjustment: 5 seconds - 15 minutes
Dusk Level Adjustment: Day & night or night only operation
Operating temperature: 0 to 40°C
Environment Protection: For ceiling mount - IP44
For flush mount - IP44 (at sensor portion only)
- IP20 (ceiling board onwards)

GUARANTEE
The company undertake to replace or repair, at its discretion should it become defective within a period of 1 year after delivery, solely as a result of faulty materials and/or workmanship. Understandably, if the product has not been installed, maintained or used appropriately, or if an attempt has been made to rectify, dismantle or alter the product in any way, the guarantee will be invalidated. This guarantee states the company's entire liability. It does not extend to cover consequential loss or damage or installation cost arising from the defective product. This guarantee does not restrict or infringe the normal statutory rights of the customer.

COMPLIANCE WITH E.U. DIRECTIVES
Apart from meeting the appropriate British standards, products are manufactured in accordance with BS EN ISO 9002 and comply with the LV (72/23/EEC) Directive.



FURTHER INFORMATION CONTACT
TECHNICAL SUPPORT
Telephone: 0161 331 5700
E-mail: technical@whitecroftlight.com
<http://www.whitecroftlighting.com>



VALH 360° Dual Mount PIR installation and operating instructions

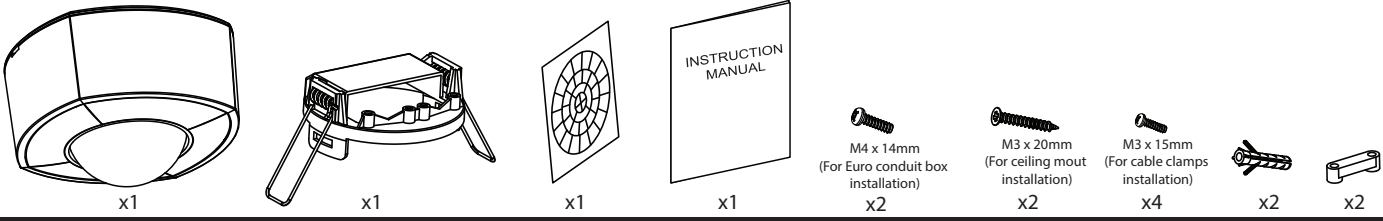


Only suitably qualified personnel should install this equipment

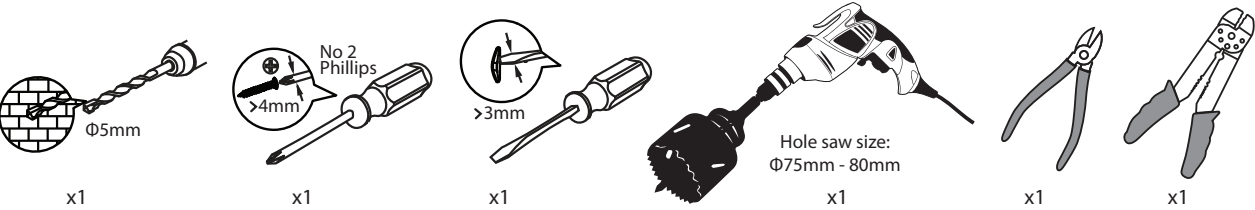
- To prevent electrocution, do not work on any appliance live. Turn off mains before commencing work, lock-out tag-out must be followed.
- The current editions of the IEE Wiring Regulations (BS7671) and Buildings Regulations must be followed for installation.
- Ensure all terminal screws are fully tightened and product is securely fixed to its mounting box prior to turning on the mains supply.



PACK CONTENTS

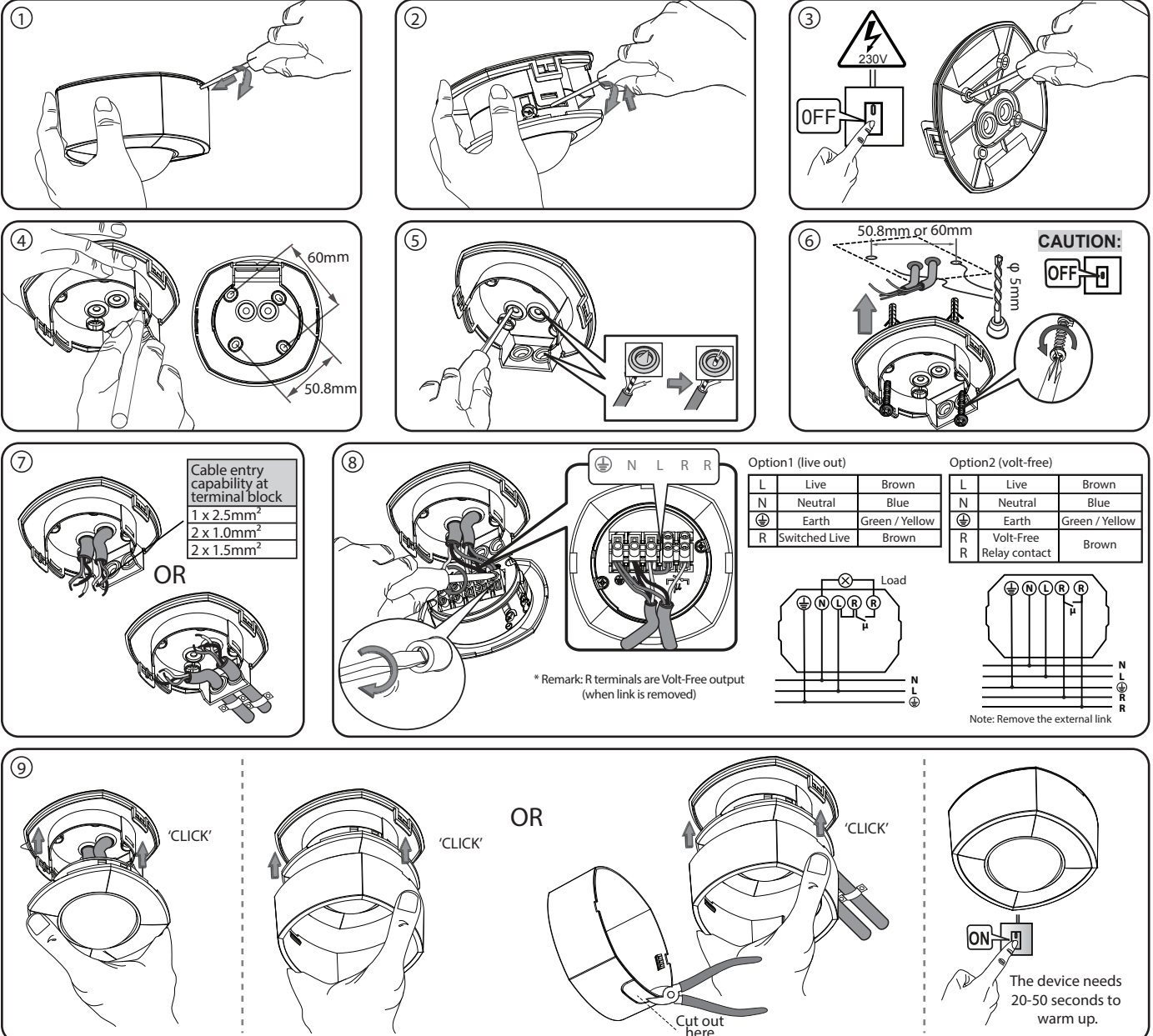


REQUIRED (Warning: Use only VDE Certified Tools)



MOUNTING/ INSTALLATION STEPS

Surface Mount



MOUNTING/ INSTALLATION STEPS

Flush Mount

1

2

3

4

Opening hole
75mm~80mm diameter

Ceiling board
thickness
5mm-20mm

Power wire

Cable entry
capability at
terminal block

1 x 2.5mm ²
2 x 1.0mm ²
2 x 1.5mm ²

5

Option1 (live out)

L	Live	Brown
N	Neutral	Blue
⊕	Earth	Green / Yellow
R	Switched Live	Brown

Option2 (volt-free)

L	Live	Brown
N	Neutral	Blue
⊕	Earth	Green / Yellow
R	Volt-Free Relay contact	Brown

* Remark: R terminals are Volt-Free output
(when link is removed)

Note: Remove the external link

6

'CLICK'

7

8

9

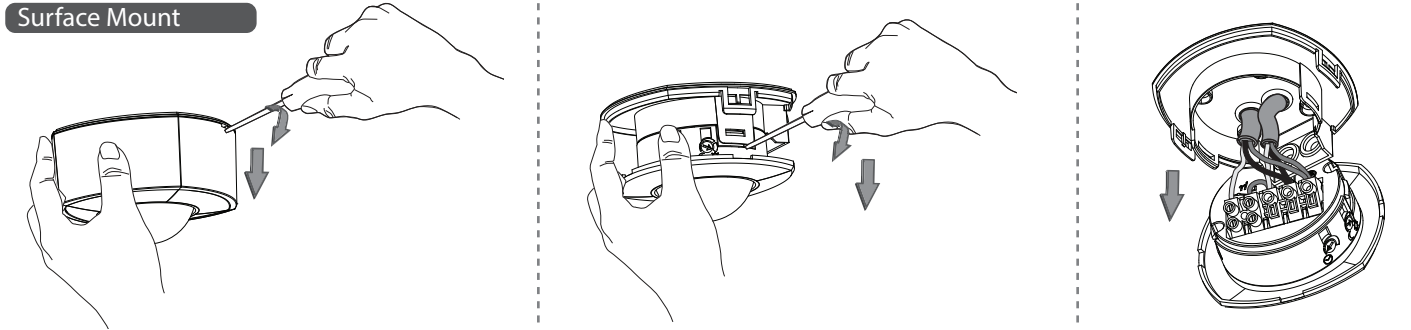
Ceiling board

The device need
20-50 seconds to
warm up.

DRAFT

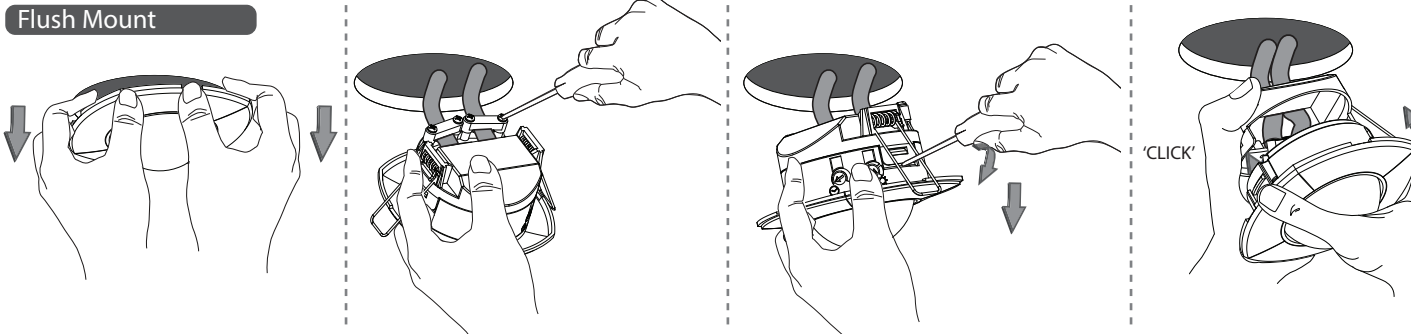
REMOVING

Surface Mount

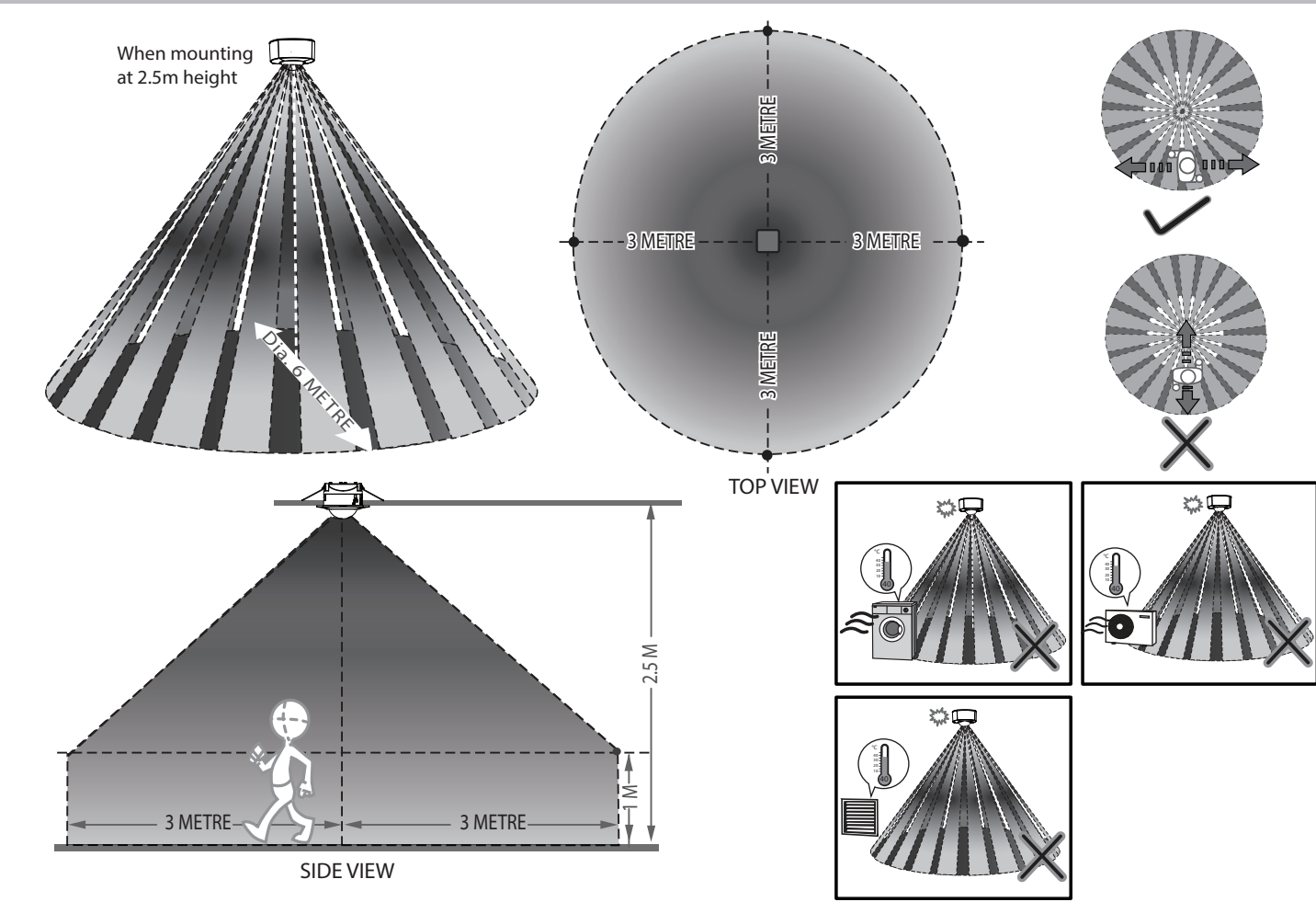


REMOVING

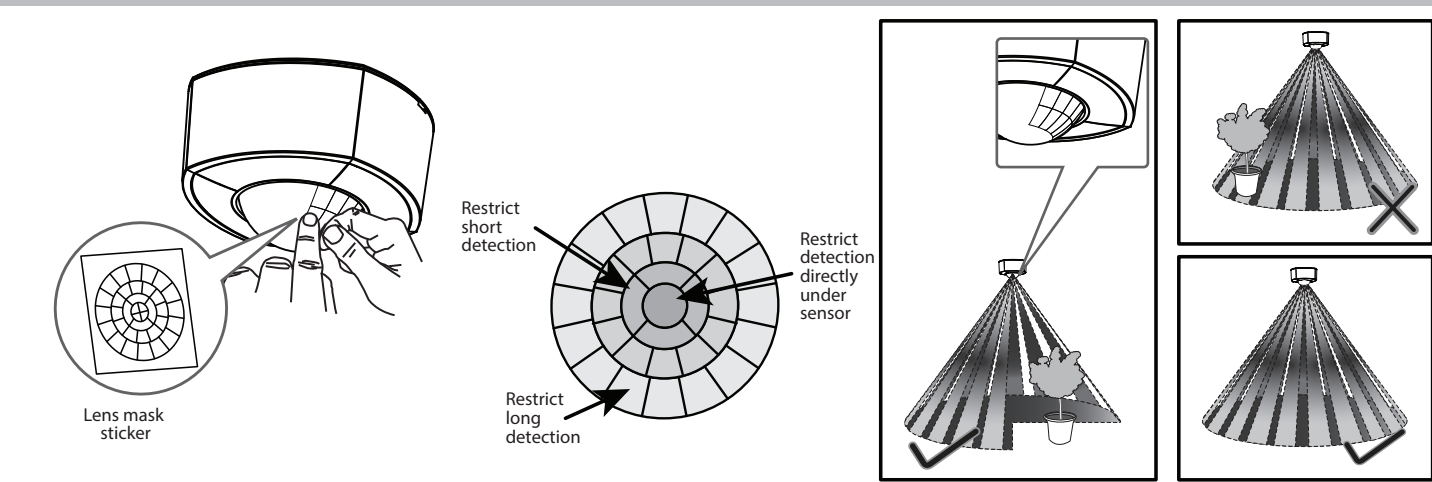
Flush Mount



MOTION SENSOR DETECTION



LENS MASK



TESTING & OPERATION

Adjustment

-Can be adjusted by flat head screwdriver.

