

GENERAL INFORMATION

- 1) A qualified electrician, in accordance with IEE wiring regulations, should carry out connection to mains wiring.
- 2) Ensure that the rated voltage and frequency requirements are compatible with the available mains supply.
- 3) Cleaning of reflectors and lenses should be carried out using clean, soft and lint free cloths and anti-static cleaning fluid
- 4) Do not carry out high voltage insulation test, i.e. 500/1000v this may damage internal components.
- 5) Make sure product is isolated before installation.
- 6) We recommend use of a high temperature Copper Paste on all screws that need to be accessed during maintenance process, this will prolong the life of the fixings and reduce the force required to remove the screws.
- 7) Some luminaires installed in outdoor environments may experience a build-up of internal condensation. This is due to a difference in temperature between inside and outside the luminaire which is quite common and acceptable under BSEN60598.

GENERAL MAINTENANCE

To access the inside of the luminaire you will need to remove the 3 size 4 allen key screws located on the top of the luminaire. Undo the screws at bottom of reflector and remove to gain access to the gear tray. Then reverse the process to put cover back.

TECHNICAL SUPPORT

Tel: 0161 331 5700

E-mail: technical@whitecroftlight.com

www.whitecroftlighting.com



Cygnus SX Installation Leaflet



PK/LEAF/CYGNSX

June 2014 - Rev B



Whitecroft Lighting Limited

Burlington Street, Ashton-under-Lyne, Lancashire OL7 0AX
Telephone +44 (0)870 5 087 087 Facsimile: +44 (0)870 5 084 210

Registered No. 3848973 England

Registered Office: As above

Specification

The Cygnus SX is a IP65 exterior lighting product.

Height mm	Width mm	Weight kg
765mm	375mm	7.7

Each Cygnus SX luminaire is shipped in one single package:

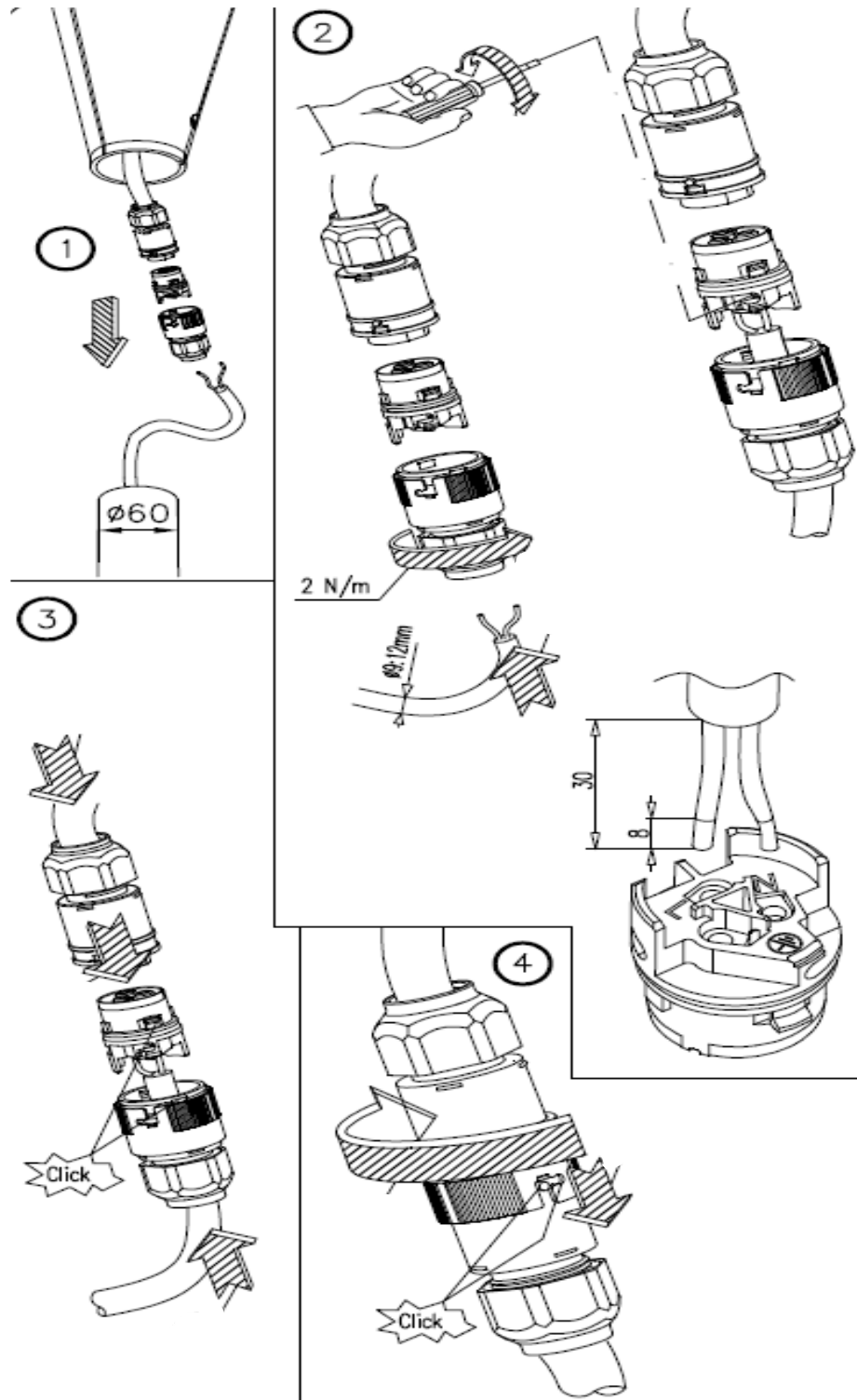
Before commencing installation, check contents of all carton to ensure that all components are present and in good condition.

- 1) Main body and head
- 2) Ip65 terminal connection block

INSTALLATION SEQUENCE

In order to fit this luminaire, the correct sequence of assembly must be observed.

1. Remove the fitting from its packaging along with the IP65 Terminal connection block, (fig 1).
2. Take a 3 core cable (diameter= 9:12mm, 1.5mmsq core) and push through the grommet, (fig 1).
3. Take the connection terminal block and wire the live, neutral in and the earth into the remaining terminal connection point, (fig 2).
4. Then push the connection terminal block into the grommet till it clicks, (fig 3).
5. Tighten the stuffing gland so that the cable is secure. (caution must be taken not to drop stuffing gland as it can be difficult to recover.)
6. Take both sides of the connector and push together, (fig 3).
7. Pull cover up and twist until the small knobs click into place, (fig 4).



7. Loosen the screws at the bottom of the base of the luminaire, (fig. 5).
8. Slot the head of the luminaire on the top of the post making sure that it fits with a maximum width of the post top being 60mm, (fig.5).
9. Tighten the screws so that the head of the fitting is securely fastened to the pole with a force of 6 Nm.
10. Make sure the head is secure on the top of the post.

