

## GENERAL INFORMATION

- 1) Please follow the instructions overleaf in sequence.
- 2) A qualified electrician, in accordance with IEE wiring regulations, should carry out connection to mains wiring.
- 3) **TURN THE POWER OFF DURING MAINTENANCE!**
- 4) Ensure that the rated voltage and frequency requirements are compatible with the available mains supply.
- 5) Damaged components must be replaced with new ones of the same type.
- 6) Always make sure the diffuser surface is cleaned of dirt and other foreign matter.
- 7) Cleaning of reflectors and lenses should be carried out using clean, soft and lint free cloths and anti-static cleaning fluid.
- 8) Suitable for indoor and outdoor installation.
- 9) Photobiological safety: Exempt group at a distance of 1.5m, according to EN 62471:2008
- 10) The LED light source contained in this luminaire shall only be replaced by the manufacturer or his service agent or a similarly qualified person.
- 11) Replaced damaged protective shields with manufacturers spare parts only.
- 12) The LED luminaires are protected against overvoltage, such as electrostatic discharge, with protective impedance made to comply with BS EN 60598.
- 13) Some luminaires installed in outdoor environments may experience a build-up of internal condensation. This is due to a difference in temperature between inside and outside the luminaire which is quite common and acceptable under BS EN 60598.

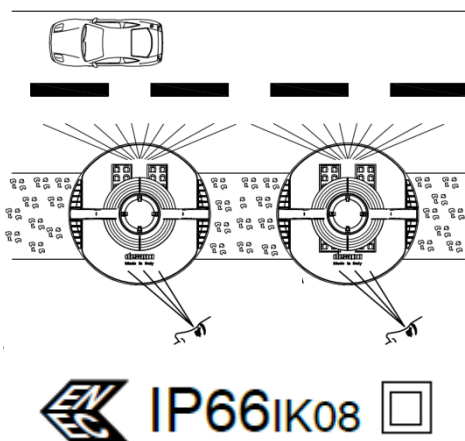


Fig.8 Orientation / alignment of fittings.

Please note: All images shown are for illustration purposes and should be used as a reference guide only.

**TECHNICAL SUPPORT**  
Tel: 0161 331 5700  
E-mail: [technical@whitecroftlight.com](mailto:technical@whitecroftlight.com)  
[www.whitecroftlighting.com](http://www.whitecroftlighting.com)



## Cygnus SY Installation Leaflet



PK/LEAF/CYGNSY

October 2015 - Rev B



**Whitecroft Lighting Limited**

Burlington Street, Ashton-under-Lyne, Lancashire OL7 0AX  
Telephone +44 (0)870 5 087 087 Facsimile: +44 (0)870 5 084 210

Registered No. 3848973 England

Registered Office: As above

## Specification

The Cygnus SY is an Exterior post top luminaire. The product is Class II insulated and does not require an earth connection.

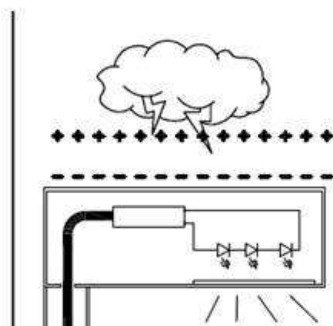
Each Cygnus SY luminaire is shipped in one single package:

Before commencing installation, check contents of carton to ensure that all components are present and in good condition.

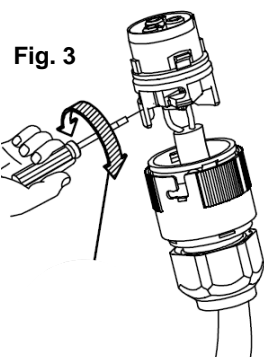
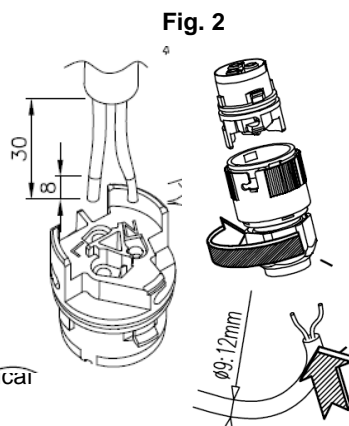
1. Driver Housing – Contains insert for 60mm poles
2. Lamp Housing
3. Connector Kit – Bagged terminal block, cable gland and M6x16 screws

**Fig. 1** Installation of Class 2 luminaires on fibreglass poles

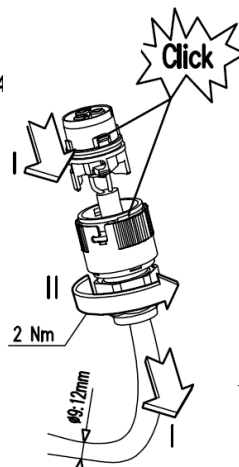
## WIRING CONNECTIONS



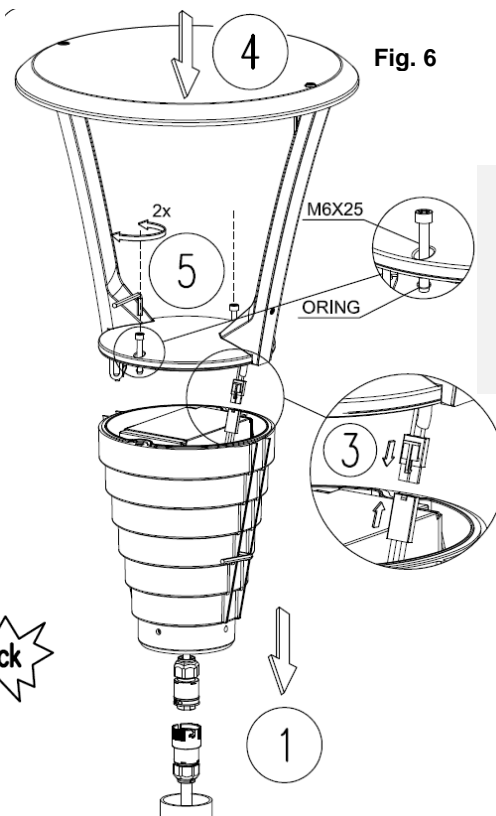
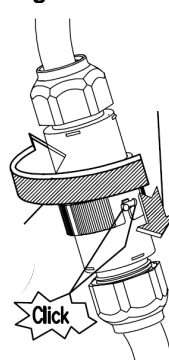
If the product is to be installed on fibreglass poles, the LED circuit can develop very high electrical potential that would damage the luminaire. Therefore in this case it is recommended to carry out equipotential bonding between the fixture's metal frame and the ground terminal.



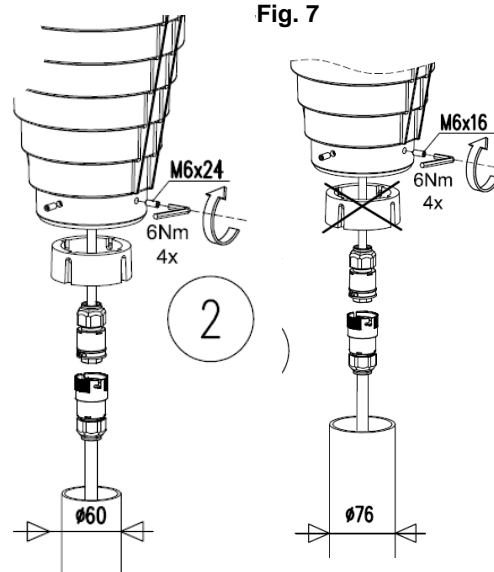
**Fig. 4**



**Fig. 5**



**Fig. 6**



**Fig. 7**

## INSTALLATION SEQUENCE

It is recommended that the fitting is assembled prior to screwing to the top of the post.

## Housing Assembly

1. Remove the fitting from the packaging (be careful separating the cardboard inserts as the driver housing sits loose inside).
2. Connect the two pole plugs. (Fig. 6, Step 3)
3. Attach the driver housing to the lamp housing. Ensure the gasket seal is free from dirt and debris prior to tightening the M6 screws to a torque of 2Nm. Make sure the rubber o-rings are attached to each screw. (Fig. 6, Step 4/5)

## Wiring

4. Strip back supply cable (not included) as shown. Cores should be 1.5-2.5mm<sup>2</sup>. (Fig. 2)
5. Feed cable through gland, push live and neutral wires into the screw terminals and tighten. (Fig. 3)
6. Snap terminal plug into gland before tightening around cable. (Fig. 4)
7. Connect the mains flex connector to the driver housing connector and secure using bayonet feature. (Fig. 5)

## Mounting to column

8. Pull the mains flex and connector out of the base of the driver housing. (Fig. 6, Step 1)
9. The housing comes with an insert for a 60mm diameter post which should be in place and fixed with the M6 x 24mm grub / blind set screws. (Fig. 7)
10. For a 76mm pole remove the insert, taking care not to lose the nuts that the screws fasten to (these are not held captive in the housing) and re-fit with the M6 x 16mm screws. For each variant screws should be tightened to a torque of 6Nm. (Fig. 7)