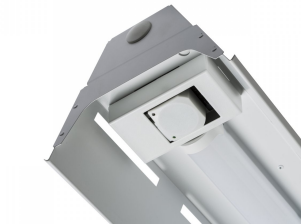


Harrier LED 1

Low and high bay LED luminaire



Integral Com5 Eco Detector



Symmetric Medium Specular Reflector



High Rack Reflector

Optics

- Nominal output options;
 - 2500 lumens (19W), single row
 - 5000 lumens (42W), single row
 - 7500 lumens (61W), twin row
 - 10,000 lumens (79W), twin row
 - 15,000 lumens (116W), twin row
 - 22,000 lumens (168W), twin row
- Emergency Output (BLF):
 - Variants without louvre - 500 Lumens
- 'Cool' white 4000K colour temperature LEDs
- Clip in curved opal diffuser for optimum diffusion
- Choice of reflectors for specific application;
 - Symmetric wide reflector finished white; for broad open area light distribution
 - Symmetric medium specular reflector; for medium open area light distribution
 - High rack; for high bay elliptical light distribution to effectively illuminate racking

Body

- IP20
- Mild steel batten finished white
- RAL Colour: White RAL9003.
- Robust curved polycarbonate diffusers
- BESA fixings on body section
- Choice of integral emergency; 3hr or COMEPS
- Emergency variants supplied with a NiCd battery
- Command 5 Eco, for simple, pre-commissioned switching at up to 6m mounting heights

Order codes

High Rack

B50						
High Rack	Fixed Output	3hr Emergency	LL/CW	L70	L80	L90
7300 lumens (61W)	HRHRH34K	HRHRH34KEM	120	>100k	>100k	65k
10,296 lumens (79W)	HRHRH44K	HRHRH44KEM	131	>100k	65k	31k
16,333 lumens (116W)	HRHRH54K	HRHRH54KEM	141		50k	
22,221 lumens (168W)	HRHRH64K	HRHRH64KEM	132		50k	
Note: Luminaire codes HRHRY54K have 2 drivers and require 2 DALI addresses						
Note: Luminaire codes HRHRY64K have 2 drivers and require 2 DALI addresses						

Symmetric Medium

B50						
Symmetric Medium	Fixed Output	3hr Emergency	LL/CW	L70	L80	L90
2508 lumens (21W)	HRMH14K	HRMH14KEM	132	>100k	>100k	64k
5029 lumens (42W)	HRMH24K	HRMH24KEM	121	>100k	97k	44k
7583 lumens (61W)	HRMH34K	HRMH34KEM	124	>100k	>100k	65k
10,191 lumens (79W)	HRMH44K	HRMH44KEM	129	>100k	65k	31k
15,553 lumens (116W)	HRMH54K	HRMH54KEM	134		50k	
21,860 lumens (168W)	HRMH64K	HRMH64KEM	130		50k	
Note: Luminaire codes HRMY54K have 2 drivers and require 2 DALI addresses						
Note: Luminaire codes HRMY64K have 2 drivers and require 2 DALI addresses						

Symmetric Wide

B50						
Symmetric Wide	Fixed Output	3hr Emergency	LL/CW	L70	L80	L90
2588 lumens (21W)	HRWH14K	HRWH14KEM	137	>100k	>100k	64k
5006 lumens (42W)	HRWH24K	HRWH24KEM	120	>100k	>100k	97k
7568 lumens (61W)	HRWH34K	HRWH34KEM	124	>100k	>100k	65k
10,242 lumens (79W)	HRWH44K	HRWH44KEM	130	>100k	>100k	31k
15,679 lumens (116W)	HRWH54K	HRWH54KEM	135		50k	
21,817 lumens (168W)	HRWH64K	HRWH64KEM	129		50k	
Note: Luminaire codes HRWY54K have 2 drivers and require 2 DALI addresses						
Note: Luminaire codes HRWY64K have 2 drivers and require 2 DALI addresses						

Accessories

Suspension Kit	AERSK1
----------------	--------

Options

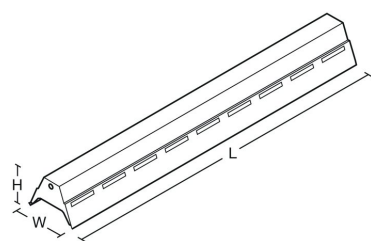
COM 5 ECO**	Add Q5E before H	i.e HRWQ5EH34K
COMEPS*	Add suffix /EP	i.e HRWH34K/EP
DALI	Replace H with Y	i.e HRWY34K

* Can be wired as Easytest if required
** Cannot be used with DALI products. Up to 6m mounting height. Not for use with High rack product

LED Performance

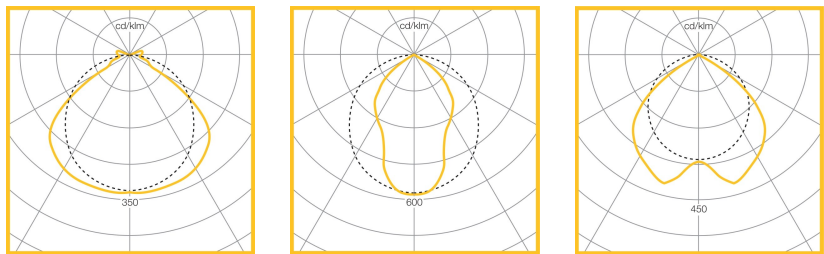
Colour Temp	RA (CRI)	Colour consistency
4000K	>80	MacAdam 3 SDCM

Dimensions



VERSION	L	W	H	KG	KG(EM)
2500/7500 lumen	1275	198	137	4.5	5.5
5000/10,000 lumen	1575	198	137	7.1	8
Hi Rack, 7500 lumen	1275	264	168	5	6
Hi Rack, 10,000 lumen	1575	264	168	7.5	8.5
15,000/22,000 lumen	1875	198	137	7.2	8.2
Hi Rack 15,000/22,000 lumen	1875	264	168	7.2	8.7

Photometric Performance

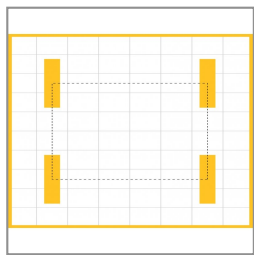


Symmetric Wide
42W LED 5006
Lumens
LOR = 100.0%
SHR MAX = 1.83

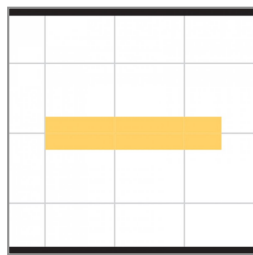
High Rack 79W
LED 10296
Lumens
LOR = 100.0%
SHR MAX = 1.06

Symmetric
Medium 21W LED
2508 Lumens
LOR = 100.0%
SHR MAX = 1.91

Performance Guide



Lamps	45W LED
Illuminance	460 lux
Spacing	3.0m x 3.0m
Maintenance	0.8
Reflectance	70/50/20
Ceiling Height	6.0m
Working plane	0.8m



Lamps	89W LED
Illuminance	301 lux
Spacing	0.0m x 4.5m
Maintenance	0.8
Reflectance	70/50/20
Ceiling Height	6.0m
Working plane	0.0m

To Specify

Harrier

LED low bay luminaire with clip in curved polycarbonate opal diffuser for ease of assembly and optimum diffusion. BESA fixings on body – as Whitecroft Lighting HARRIER LED 1

Harrier High Rack

LED low bay luminaire with clip in curved polycarbonate opal diffuser for ease of assembly and optimum diffusion. BESA fixings on body. High rack reflector for illumination of racking and aisles – as Whitecroft Lighting HARRIER LED 1 HIGH RACK

Application images

