

## GENERAL INFORMATION

- 1) A qualified electrician, in accordance with IEE wiring regulations should carry out connection to mains wiring.
- 2) Electrical Class I luminaire
- 3) Ensure that the rated voltage and frequency requirements are compatible with the available mains supply.
- 4) Cleaning of reflectors and lenses should be carried out using clean, soft and lint free cloths and anti-static cleaning fluid
- 5) Do not carry out high voltage insulation test, i.e. 500/1000v this may damage internal components.

### TECHNICAL SUPPORT

Telephone: 0161 331 5700

E-mail: [technical@whitecroftlight.com](mailto:technical@whitecroftlight.com)

<http://www.whitecroftlighting.com/>



NOV 2018 - Rev D



## Whitecroft Lighting Limited

Burlington Street, Ashton-under-Lyne, Lancashire OL7 0AX

Telephone +44 (0)870 5 087 087 Facsimile: +44 (0)870 5 084 210

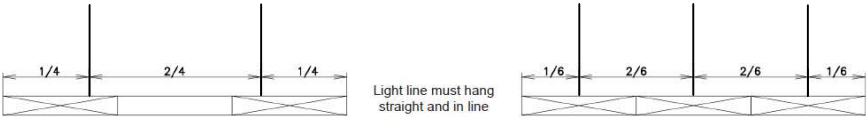
Registered No. 3848973 England Registered Office: As above

SPECIFICATION

Finish	Natural Aluminium
Materials	Aluminium/Plastic Diffusers
IK Rating	07
Supply	220-240V AC, 50-60Hz
Operating temp	-20 to 40C
Internal cables rated at maximum 16A per core	
Incoming power supply suitable for 1.5 to 2.5mm² solid core cable	
Ingress protection	IP40 When installed
Max Weight	3.9kg per m with luminaire
Max Weight	2.8kg per m without luminaire

Supension cable points

Note: suspension chains or wires excluded. to be supplied by others.



Typical power inlet wiring guide - See product number 10 for exact details

N		Neutral
E		Protective Earth
L1		Live 1
L2		Live 2
L3		Live 3
D1		Controls Dail +
D2		Controls Dail -

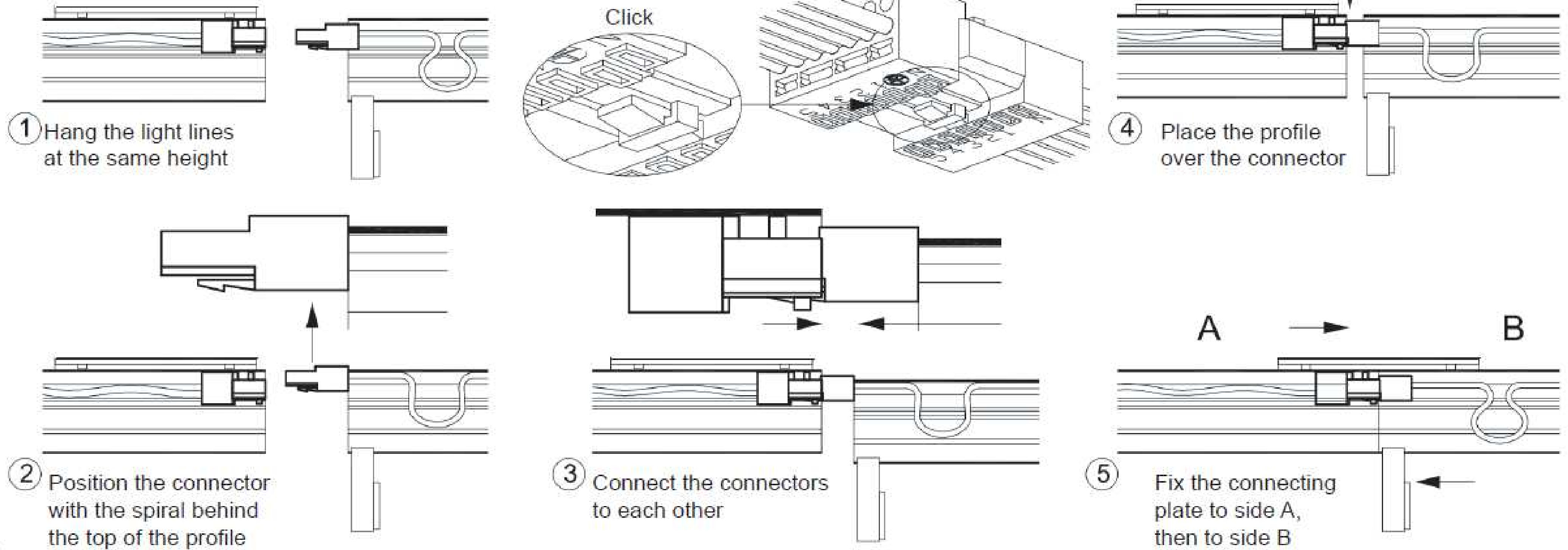
For lighting controls versions, see seperate leaflet

1. The Intral system is delivered pre-assembled for quick and easy installation
2. Unpack and check all items
3. Lay out the trunking sections and identify the number of each section, noting wiring details on Power inlet wiring guide for the start of each row
4. Cross reference trunking section numbers with delivery documents to determine the lighting layout
5. Pre-fit suspension brackets to trunking sections as seen below

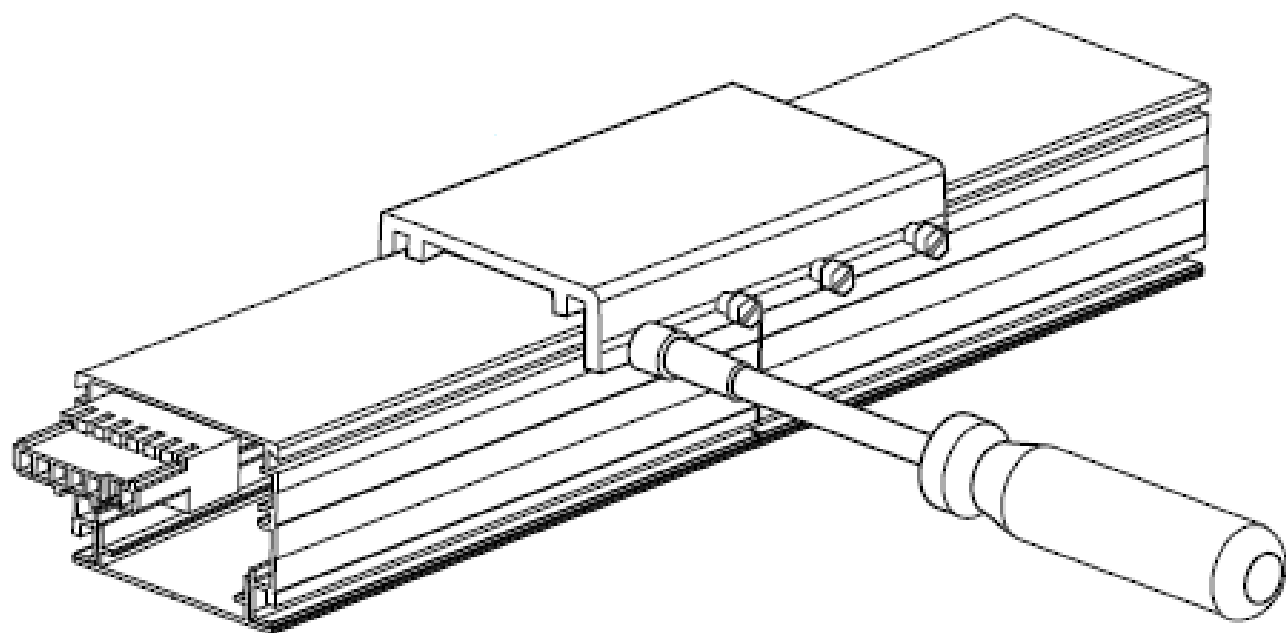


6. Use suitable access equipment to reach roof level
7. Fix appropriate suspension chains or wire(not supplied) to roof structure
8. Fix suspension chains or wire to suspension bracket on first section
9. Check horizontal alignment. Use laser leveller to set correct height for suspension points
10. Isolate power
11. Fit power supply to the beginning of the row
12. Suspend second trunking section in the same way as the first section, ensuring correct orientation
13. Connect plug and socket together (see electrical and mechanical connections)
14. Fit connecting plate across the 2 trunking sections and tighten bolts
15. Check alignment horizontally and along the length
16. Continue to fit trunking sections in the same way until reaching the end
17. Final alignment checks
18. The row is complete
19. Switch on power

## Electrical and mechanical connections



## Connecting plate



**Maximum number of luminaires per MCB, for fixed output and DALI drivers.**

Version	10A Type B	10A Type C	16A Type B	16A Type C
14000 lumen, 88W	11	18	18	30
17000 lumen, 113W	7	12	12	20