

SPECIFICATION

Lamp Type: LED

Body: Die cast aluminium with cooling fins

Lamp Colour: 4000°K

Diffuser: Tempered 4mm glass

Control Gear: Fixed Output

Paint Finish: Polyester powder coated

Rating: IP65

Power: 220-240V / 50-60Hz

Description	Output (Llm)	Weight	Product Colour
Narrow & Wide Beam Spotlight	2100 - 3500	2.7 Kg	Silver / Grey
Colour Filter Lens	N/A	0.1 Kg	Blue / Red / Green / Yellow
Cowl Accessory	N/A	0.3 Kg	Black
Adjustable Shutter Accessory	N/A	0.4 Kg	Black
Ground Mounting Spike	N/A	0.1 Kg	Black

GENERAL INFORMATION

1. A qualified electrician, in accordance with IEE wiring regulations, should carry out connection to mains wiring.
2. Ensure that the rated voltage and frequency requirements are compatible with the available mains supply.
3. Cleaning of reflectors and lenses should be carried out using clean, soft and lint free cloths and anti-static cleaning fluid.
4. Do not carry out high voltage insulation test, i.e. 500/1000v this may damage internal components.
5. This product is class 2 insulated and so does not require an earth connection.
6. Some luminaires installed in outdoor environments may experience a build-up of internal condensation. This is due to a difference in temperature between inside and outside the luminaire which is quite common and acceptable under BSEN60598.
7. Replacing the light source within this luminaire shall only be carried out by the manufacturer, service agent or a similar qualified person.

Please note: All images shown are for illustration purposes and should be used as a reference guide only

TECHNICAL SUPPORT

Tel: 0161 331 5700

e-mail: technical@whitecroftlight.com

www.whitecroftlighting.com



Mini Spot 65 Installation Leaflet



PKLEAFMINSPOT65

Mar 2016 - Rev B



Whitecroft Lighting Limited

Burlington Street, Ashton-under-Lyne, Lancashire OL7 0AX

Telephone +44 (0)870 5 087 087 Facsimile: +44 (0)870 5 084 210

Registered No. 3848973 England

Registered Office: As above

INSTALLATION SEQUENCE

In order to fit this luminaire, the correct sequence of assembly must be observed.

All measurements in mm unless stated otherwise

1. Remove the fitting from all of the packaging.

Optional To change lens colour: Remove screws on back of lamp housing before releasing standard lens via the holding screws (Fig. 1). Replace standard lens with coloured lens and re-assemble lamp housing.

Optional Attaching cowl / shutter accessory: Disassemble lamp housing (see change lens step) and attach cowl or shutter using an Allen key (Fig. 2). Avoid water pooling in cowl by angling luminaire downwards.

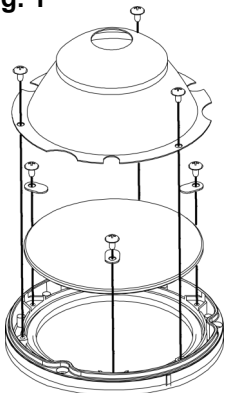
When fitting accessories ensure small O-rings are not lost

2. Remove the 4 fixing screws securing the luminaire body to the base (Fig. 3).
3. Surface mounting: Secure luminaire base to desired surface in correct orientation using appropriate fixings (by others) via surface mounting holes (Fig. 3).

Optional Ground spike mounting: Attach the mounting spike to the base (if specified) using the screws supplied via the spike mounting holes (Fig. 4) and secure the mounting spike into the ground.

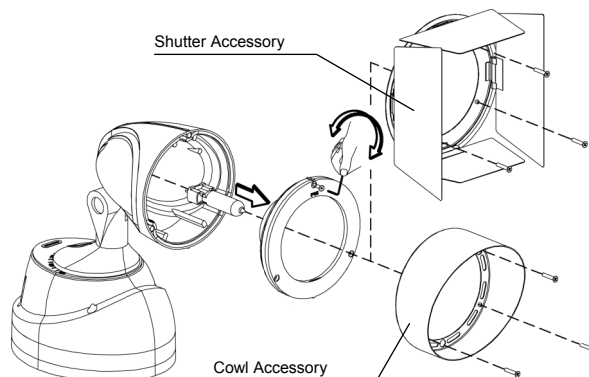
4. Feed the 2 core supply flex (\varnothing 9 min - 12 max) through the grommet (Fig. 5).
5. Strip the correct length of wire and neatly connect the 2 core supply flex to the Live/Neutral (Fig. 5).
6. Re-attach the luminaire body to the base using the 4 fixing screws (Fig. 3)

Fig. 1



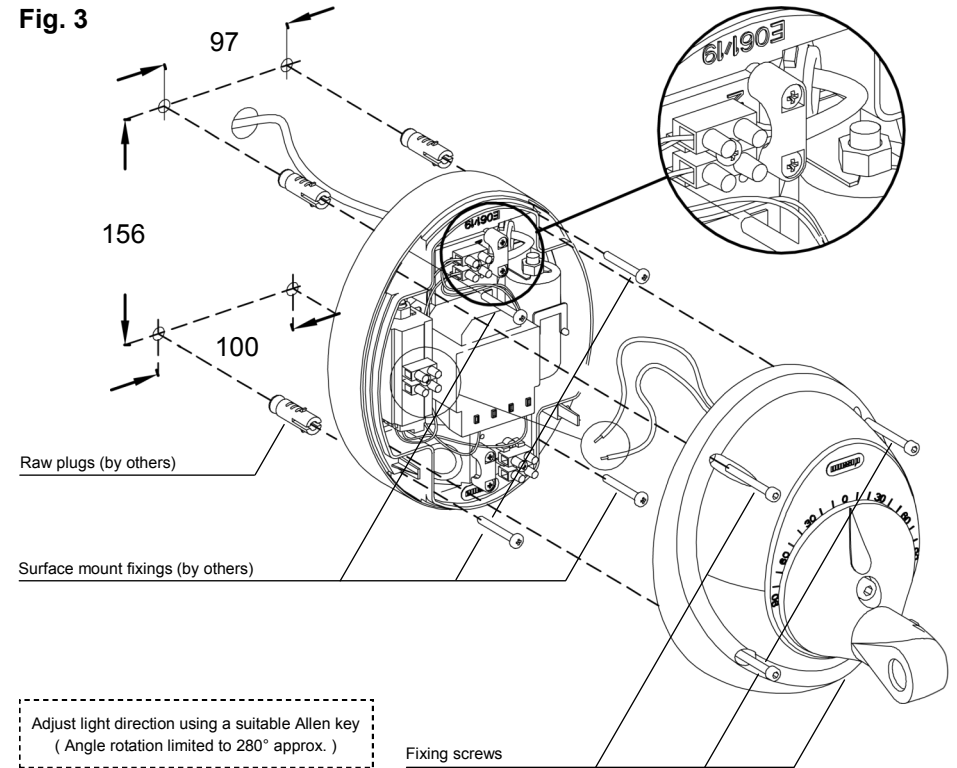
[Filter Lens Fitting]

Fig. 2



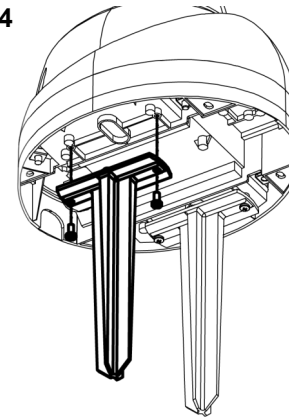
[Shutter / Cowl Fitting]

Fig. 3



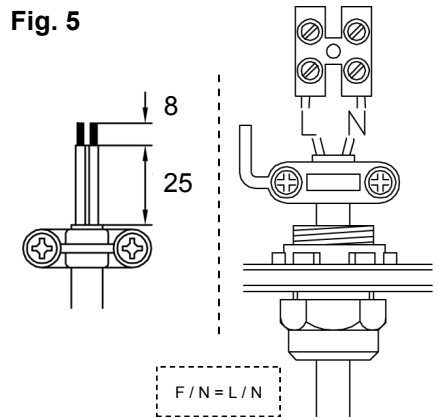
[Luminaire Base Assembly]

Fig. 4



[Ground Spike Attachment]

Fig. 5



[Wire Preparation]