

Please note that it is the responsibility of the contractor to ensure that this product is fitted to a flat surface, to ensure that the ceiling is suitably reinforced, and to verify that this kit has been installed securely.

For the Anti Ligature option and greater security, it is recommended to use anti pick mastic around the edge of the diffuser and bezel ring.

GENERAL INFORMATION

- 1) Do not install using power tools
- 2) A qualified electrician, in accordance with IET wiring regulations should carry out connection to mains wiring.
- 3) Ensure that the rated voltage and frequency requirements are compatible with the available mains supply.
- 4) Cleaning of reflectors and lenses should be carried out using clean, soft and lint free cloths and anti-static cleaning fluid
- 5) Do not carry out high voltage insulation test, i.e. 500/1000v this may damage internal components.

PRODUCT DETAILS

MSS Specification compliant anti-ligature kit with tamperproof screws, compatible with Mirage 3 C165 downlighters.

SPECIFICATION

Finish -	Ral 9003
Materials -	Polycarbonate, Steel and Stainless Steel.
Weight -	1.5kg
Ingress Protection	IP 54
Anti-Ligature Rating	IK10
Void Depth	For the void depth details refer to the Mirage 3 C165 installation leaflet.

TECHNICAL SUPPORT

Telephone: 0161 331 5700

E-mail: technical@whitecroftlight.com

<http://www.whitecroftlighting.com/>



Mirage 3

MSU Anti-Ligature Kit



Installation Leaflet

PK-LFTMALIGKIT

Aug 2025 – Rev 6



Whitecroft Lighting Limited

Burlington Street, Ashton-under-Lyne, Lancashire OL7 0AX

Telephone +44 (0)161 330 6811

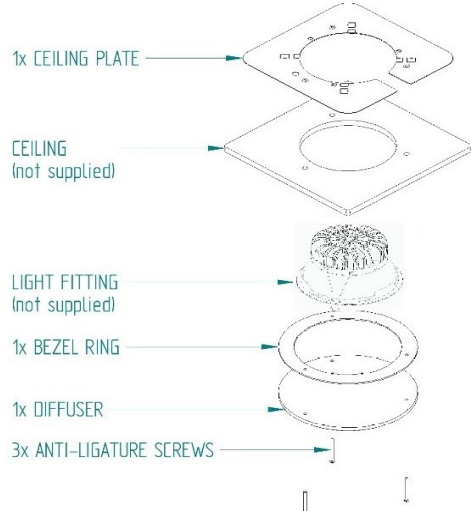
Registered No. 3848973 England

Registered Office: As above

STEP 1

Unpack and inspect the kit.

The Anti-Ligature kit consists of –



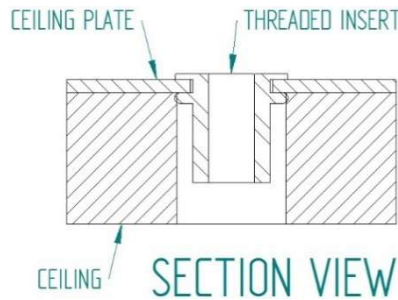
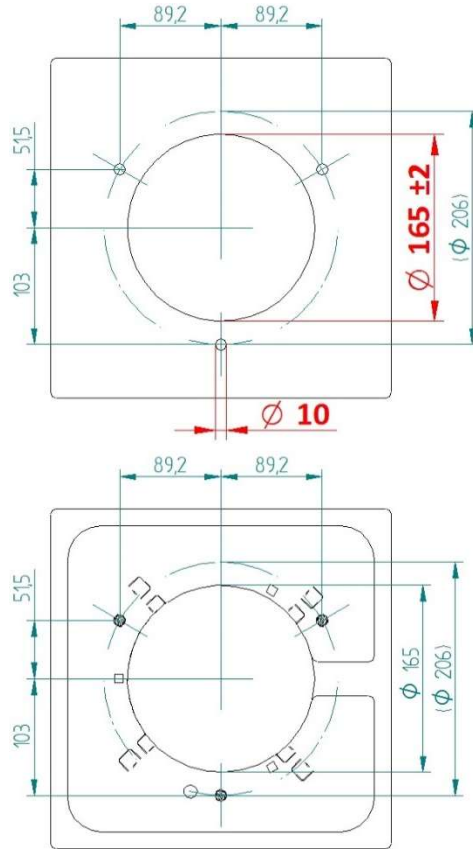
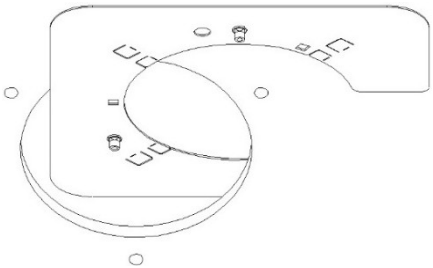
STEP 2 – CEILING PREPARATION

Suitable ceiling thickness: 9-40mm.

Cut an aperture and through-holes in ceiling as shown, using the Ceiling Plate as a template. Note the aperture diameter and tolerance of 165 ± 2 mm, and through-hole diameter of 10mm.

STEP 3 – CEILING PLATE INSTALLATION

Feed the Ceiling Plate through the ceiling aperture, with the threaded inserts facing DOWN. Position the Ceiling Plate behind the ceiling so that the threaded inserts drop into the corresponding through-holes in the ceiling



STEP 4 – Install the Light Fitting through the ceiling aperture

Refer to the Light Fitting installation instructions.

This can be made easier by temporarily attaching the screws provided into the ceiling plate before installing the fitting. This can help with keeping the Ceiling Plate flat and in place against the back of the ceiling while the fitting is being installed.

STEP 5 – Install the Bezel Ring and Diffuser.

Remove film from the diffuser, noting that on one side the film may be clear. It may be preferable to leave the film on the outside of the diffuser (the face with screw-pockets) until after installation.

Apply a 10mm bead of thread lock at the top of all 3 screws and ensure that mounting area is dust free.

Ensure that the Bezel Ring sits around the Light Fitting Bezel, not overlapping at any point. Readjust the Light Fitting position if necessary.

Ensure the Diffuser is orientated with the screw-head pockets facing down, so the screws heads are recessed into the diffuser with the chamfer pointing down.

First install screws loosely, ensuring they are engaged properly with the threaded inserts in the Ceiling Plate. If necessary, re-adjust the position of the Bezel Ring before tightening the screws to 2Nm. Please note that a security Allen key is required, sold separately HAL-KEY3 or a 3mm security hex key.

