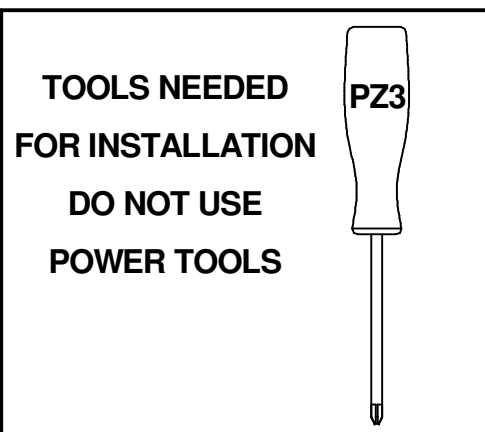


SPECIFICATION

Finish Frame - RAL 9003
Materials Frame - Rigid 0.7 mm mild steel



TECHNICAL SUPPORT

Telephone: 0161 331 5700

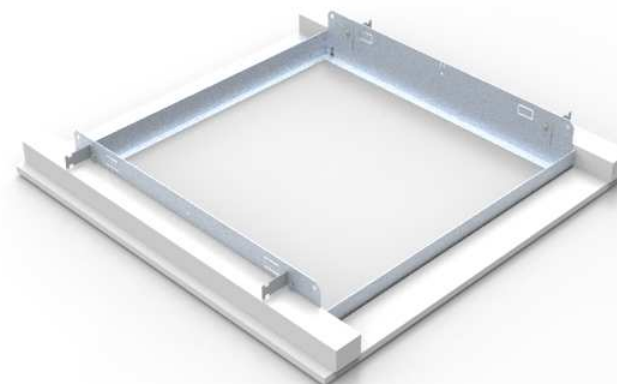
Email:
technical@whitecroftlight.com

www.whitecroftlighting.com/



TEGAN SLIM/ LIFE P LED

PLASTER BOARD RETENTION FRAME



Installation Instruction

PK-TEGANFRME-LFT

June 2019 - Rev B

Whitecroft Lighting Limited

Burlington Street, Ashton-under-Lyne, Lancashire OL7 0AX

Telephone +44 (0)161 330 6811

Facsimile: +44 (0)161 331 5855

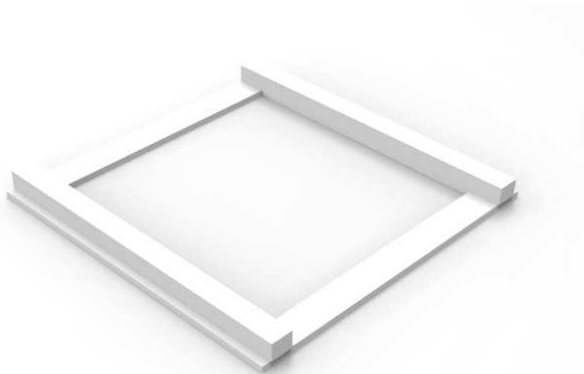
Registered No. 3848973 England

Registered Office: As above

INSTALLATION PROCEDURE

1 -

CUT & PREPARE CEILING APERTURE TO 610 X 610. ENSURE SUITABLE BATTENS OR SIMILAR ARE PLACED ALONG TWO OPPOSITE SIDES OF APERTURE TO INCREASE CEILING THICKNESS TO REQUIRED HEIGHT(MIN 29MM / MAX 54MM INC. BATTENS) . THIS WILL ALLOW DISTRIBUTION OF THE LUMINAIRE WEIGHT.

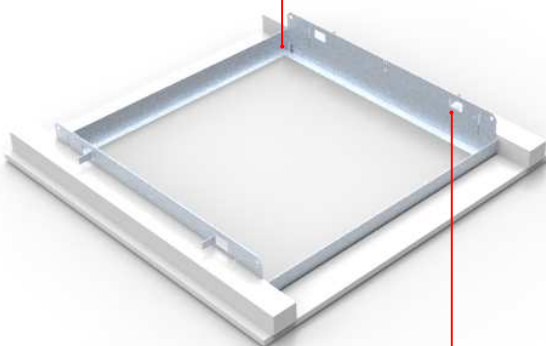


2 -

FOLD OUT 4 X LUMINAIRE CENTRALIZATION TABS IN EACH CORNER. OFFER FRAME ASSEMBLY UP TO CEILING APERTURE FROM ROOM VOID, FOLD TABS TO TEMPORARILY HOLD FITTING IN APERTURE.

LOCATE BRACKETS AND USING PROVIDED M4 SELF TAPPING SCREWS MAKE THE FINE ADJUSTMENT TO SECURE FRAME TIGHT UP TO CEILING.

LUMINAIRE CENTRALIZING TABS

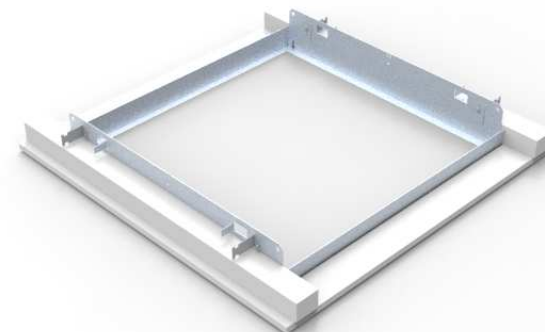


TEMP LAY IN TABS

3 -

FEED WIRING THROUGH FRAME AND FIT MAINS POWER LEAD TO LUMINAIRE TERMINAL BLOCK VIA CABLE ENTRY HOLE.

OFFER LUMINAIRE THROUGH INSTALLED FRAME INTO CEILING VOID.

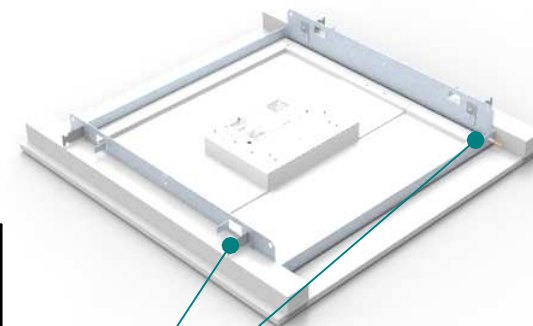


4 -

LOWER LUMINAIRE ONTO INNER FRAME FLANGE.

WARNING! IF REQUIRED FIT A SUITABLE ANCHOR USING A SECONDARY FIXING ON THE FRAME.

NOTE! LUMINAIRE ALSO REQUIRES A SEPARATE SECONDARY FIX



FOR SECONDARY FIXING POINTS THE CUT OUTS ON PLASTER BOARD FRAME CAN BE USED. ON THE LUMINAIRE FOLD UP CORNERS TO PROVIDE 4 FIXING POINT OPTIONS