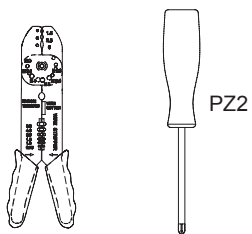


SPECIFICATION

Lamp Type:	N/A
Finish:	RAL 9003
Materials:	0.7mm Mild Steel
Weight:	Std 4.20kg / Emin 4.60kg
Operating Temp:	0 - 30°C
Connection:	2.5mm ² input terminal block
Ingress Protection:	FRONT IP44 / REAR IP20

TOOLS NEEDED FOR INSTALLATION

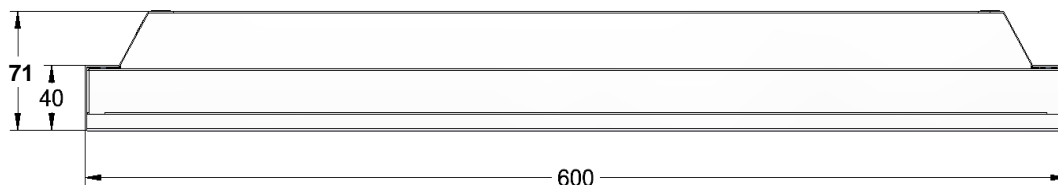


GENERAL INFORMATION

- 1) A qualified electrician, in accordance with IEE wiring regulations, should carry out connection to mains wiring.
- 2) Ensure that the rated voltage and frequency requirements are compatible with the available mains supply.

OVERALL DIMENSIONS

L - 600
W - 600
H1 - 40
H2 - 71

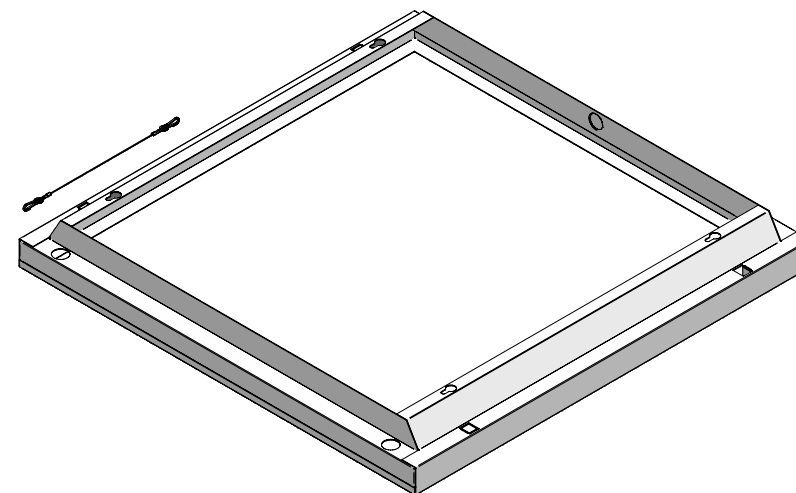


TECHNICAL SUPPORT

Tel: 0161 331 5700
E-mail: technical@whitecroftlighting.com
www.whitecroftlighting.com



TEGAN SLIM 600SQ Surface Frame



Installation Instructions

PK-NPD130-IL-SUR

AUG 2018 - Revision B



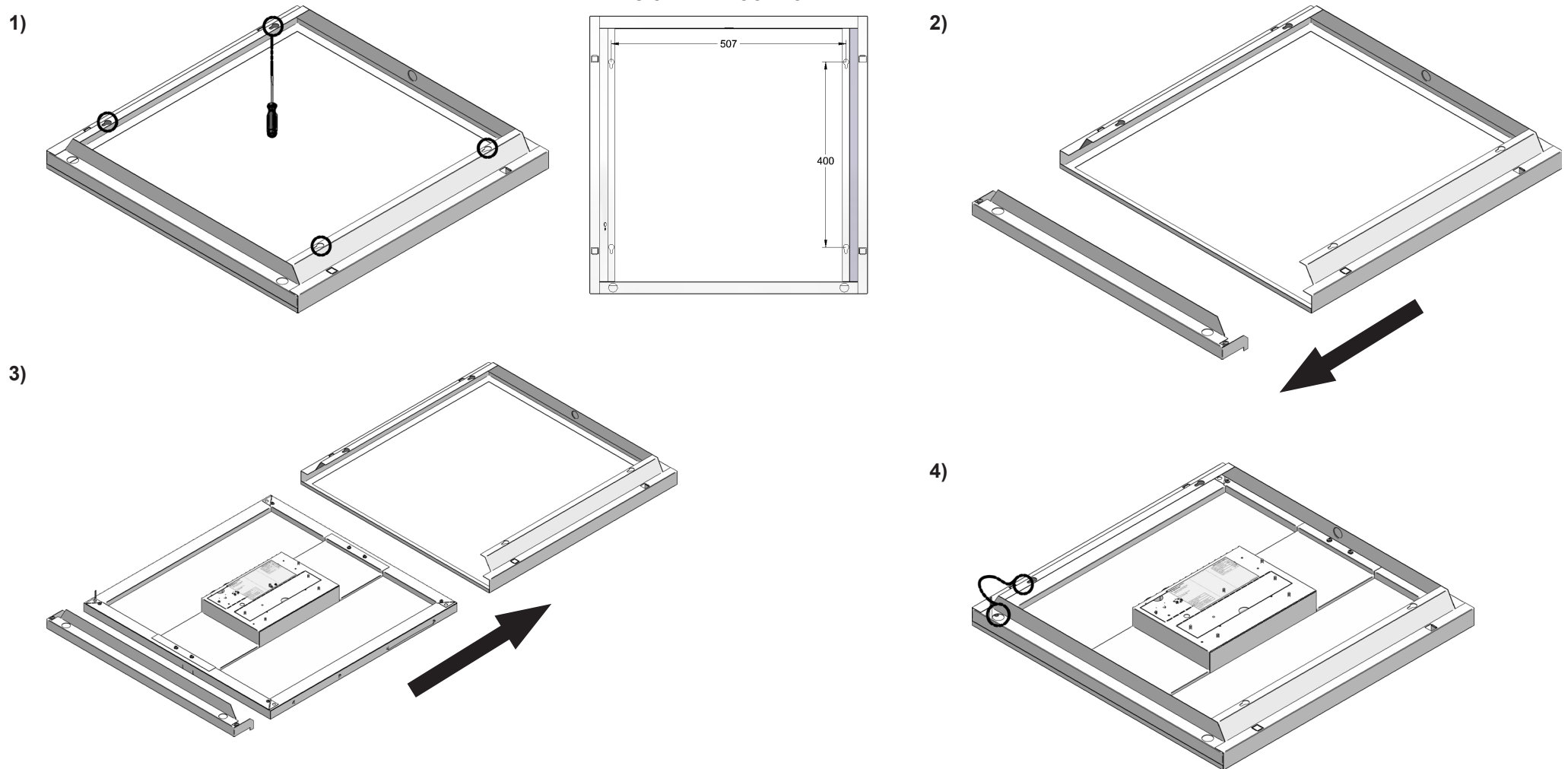
Whitecroft Lighting Limited

Burlington Street, Ashton-under-Lyne, Lancashire OL7 0AX
Telephone: +44 (0)870 5 087 087 Facsimile: +44 (0)870 5 084 210

Registered No. 3848973 England

Registered Office: As above

STANDARD TEGAN SLIM FRAME ASSEMBLY



INSTALLATION METHODOLOGY

- 1) - Retain surface mount frame onto ceiling using the four suitable fixtures
- 2) - Remove side wall off the ceiling mounted frame
- 3) - Slide Tegan Slim into the frame and replace side wall
- 4) - Ensure that the dog hook is clipped onto both the sidewall and mounted frame